

G7

26 mm G1/8 valves and solenoid valves

- G1/8 threaded valve body with traditional Univer spool system
- Versions available 5/2-5/3
- Aluminium multiple sub-base



TECHNICAL CHARACTERISTICS

Ambient temperature	-10 ÷ +45 °C
Fluid temperature	max +50 °C
Fluid	50 µm filtered and not dehumidified air, lubricated or not
Commutation system	spool
Ways/Positions	5/2, 5/3
Pressure	10 bar max
Control	indirect electro - pneumatic, pneumatic
Return	mechanical spring, pneumomechanical spring
Connections	G1/8
Nominal Ø	6 mm
Nominal flow rate	860 NI/min

CONSTRUCTIVE CHARACTERISTICS

Valve body	zamak
Seals	nitrile rubber
Actuators	technopolymer
Spool	aluminium

ELECTRIC CHARACTERISTICS

Electropilot	U1
Coil	DA series
Power consumption	3,5 W (DC) - 5 VA (AC)
Connector	AM-5110
Voltage	12 V DC - 24 V DC - 24 V AC - 110 V AC - 230 V AC
Manual override	with 2 position screw

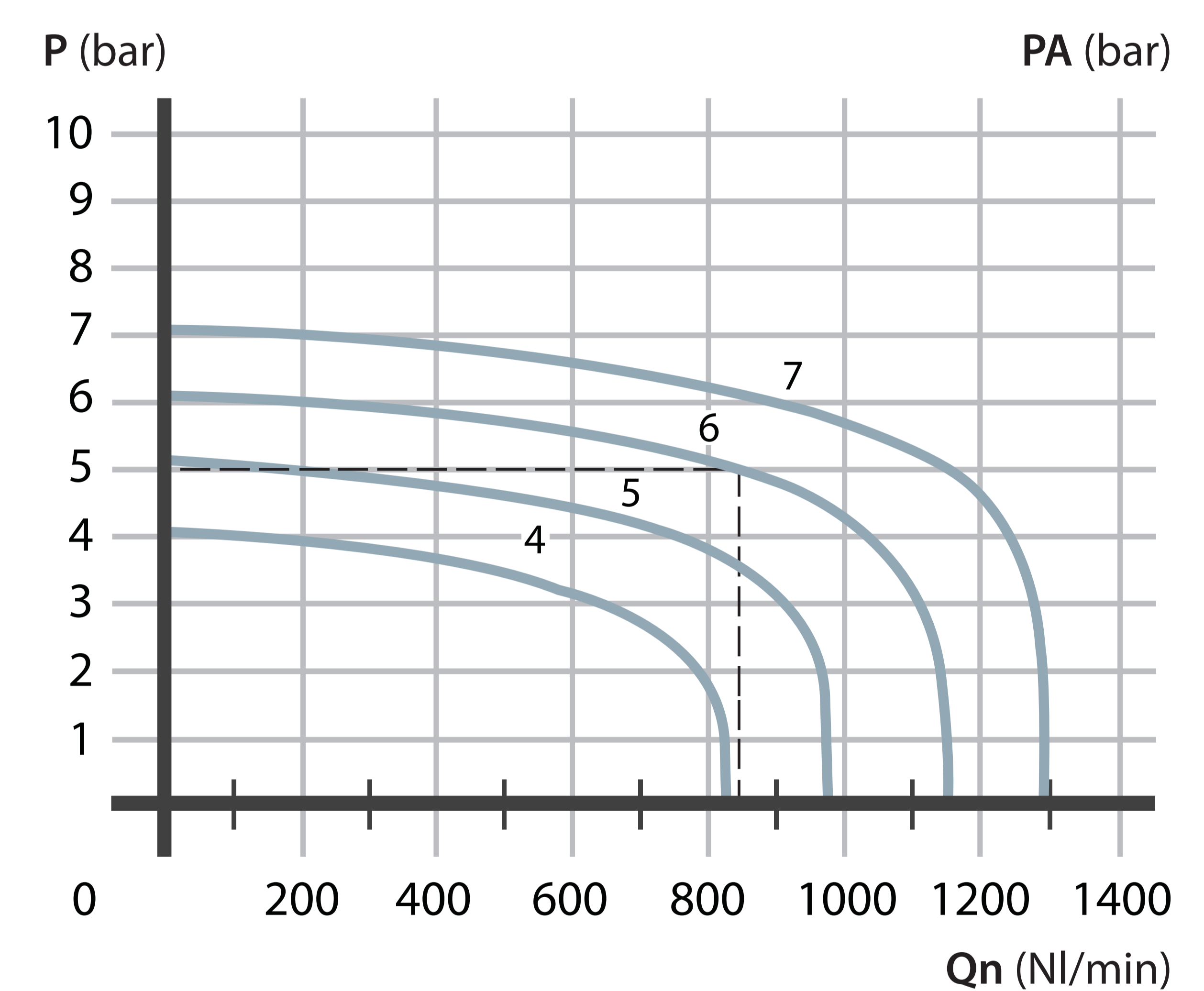
CODIFICATION KEY

G	7	3	9	0	D
1	2	3	4	5	

1 Series G7 = G1/8 26 mm valves	2 Type 2 = 5/2 3 = 5/3 c.c. 4 = 5/3 o.c. 5 = 5/3 p.c.	3 Control 14 3 = pneumatic on the body 9 = in line electric U1 pilot
---	--	---

4 Return 12 0 = pneumomechanical spring 1 = mechanical spring 3 = pneumatic on the body 9 = in line electric U1 pilot	5 Option D = pilot external servo-assistance on valve body (M5) G = manual override on the valve body (only bistable versions)
--	---

Flow rate characteristics



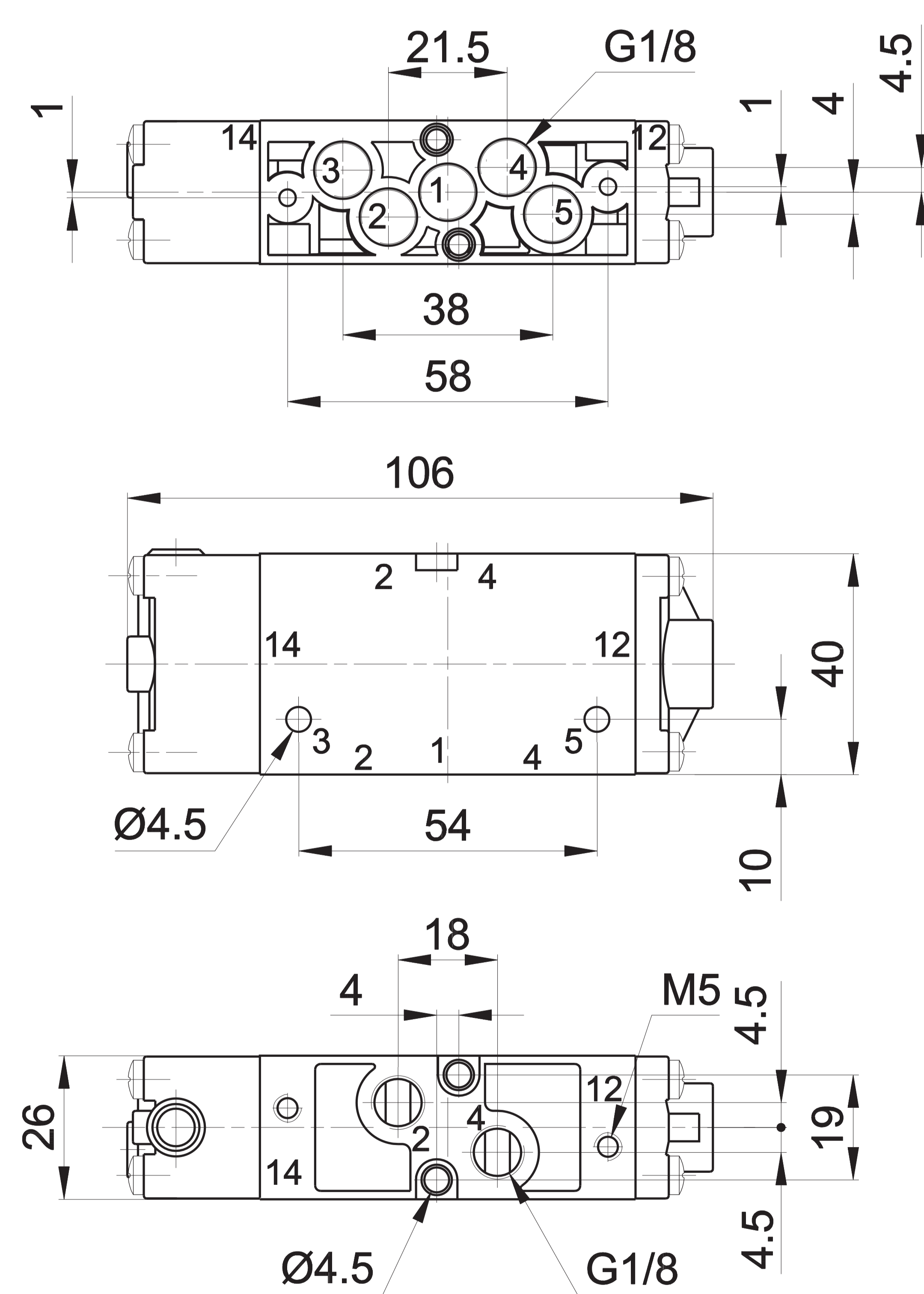
P = Working pressure
PA = Supply pressure
Qn = Flow rate

Single/double **pneumatic impulse**

Symbol	Control	Return	Pressure bar	Times (ms)		Weight Kg	Part no.	
				En.	De-en.			
SINGLE PNEUMATIC IMPULSE								
5/2		pneumatic amplified	pneumomechanical spring	1,5÷10	8	14	0,190	G-7230
5/2		pneumatic amplified	mechanical spring	1,5÷9	18	64	0,190	G-7231
DOUBLE PNEUMATIC IMPULSE								
5/2		pneumatic amplified	pneumatic amplified	0,7÷10	4	4	0,190	G-7233
5/3 c.c.		pneumatic amplified	pneumatic amplified	2÷10	8	8	0,200	G-7333
5/3 o.c.		pneumatic amplified	pneumatic amplified	2÷10	8	8	0,200	G-7433
5/3 p.c.		pneumatic amplified	pneumatic amplified	2÷10	8	8	0,200	G-7533

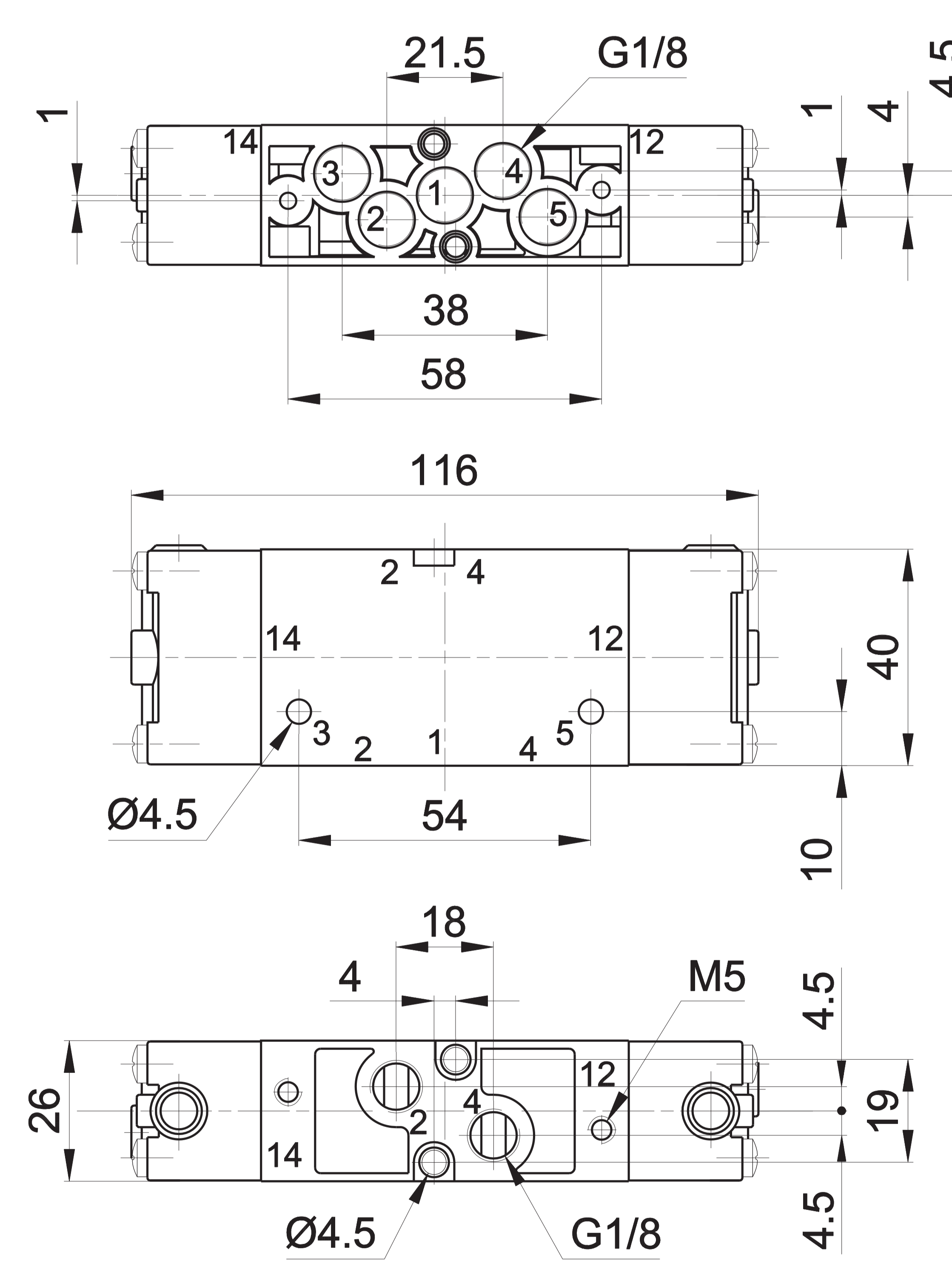
o.c. = open centres c.c. = closed centres p.c. = pressurized centres

■ Single pneumatic impulse



- 1 = Supply port
- 2 - 4 = Use
- 3 - 5 = Exhaust
- 14 = Control
- 12 = Return

■ Double pneumatic impulse



The valve is supplied with two plugs to be mounted with loctite onto the unused 2-4 connections

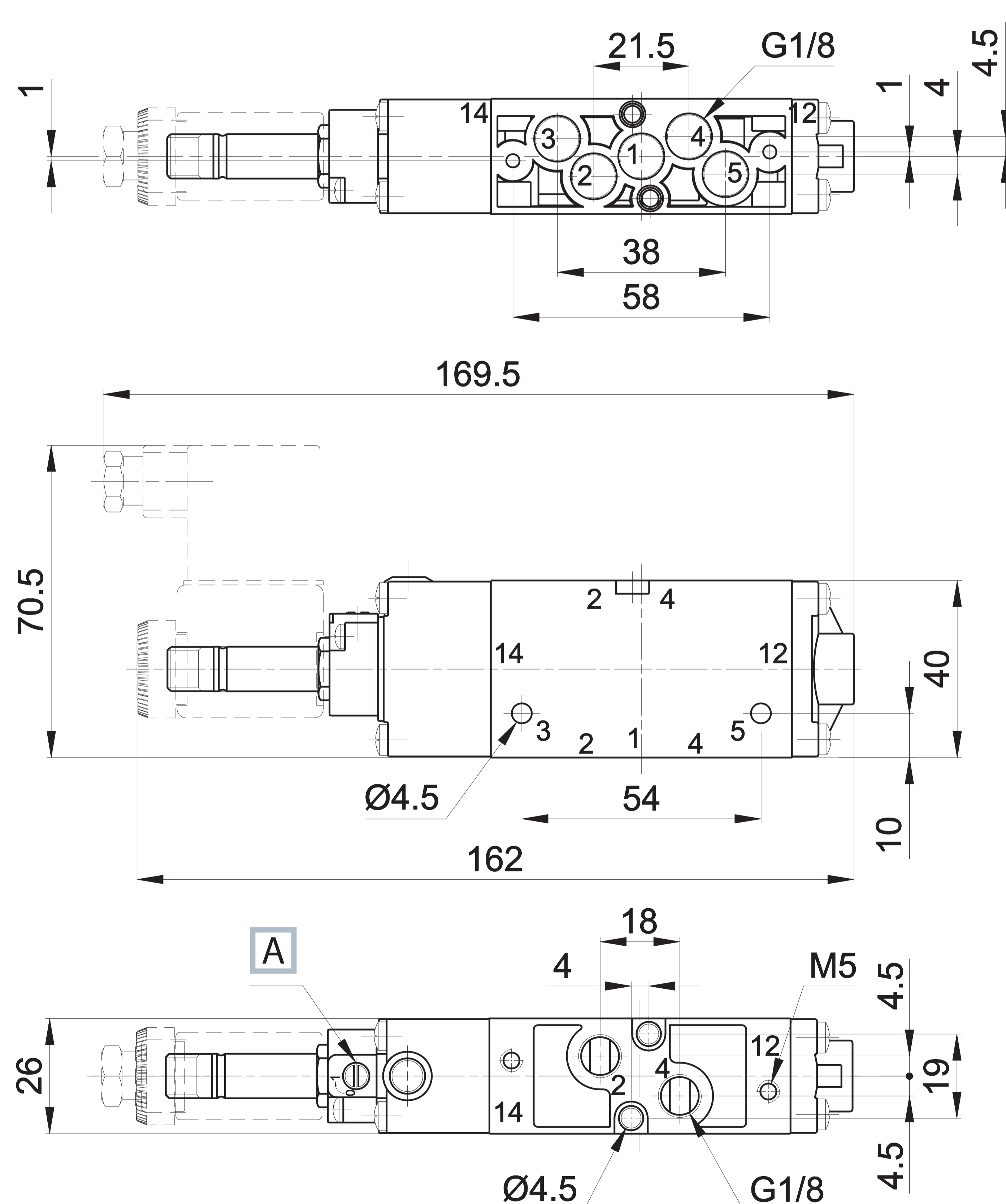
Single/double electric impulse



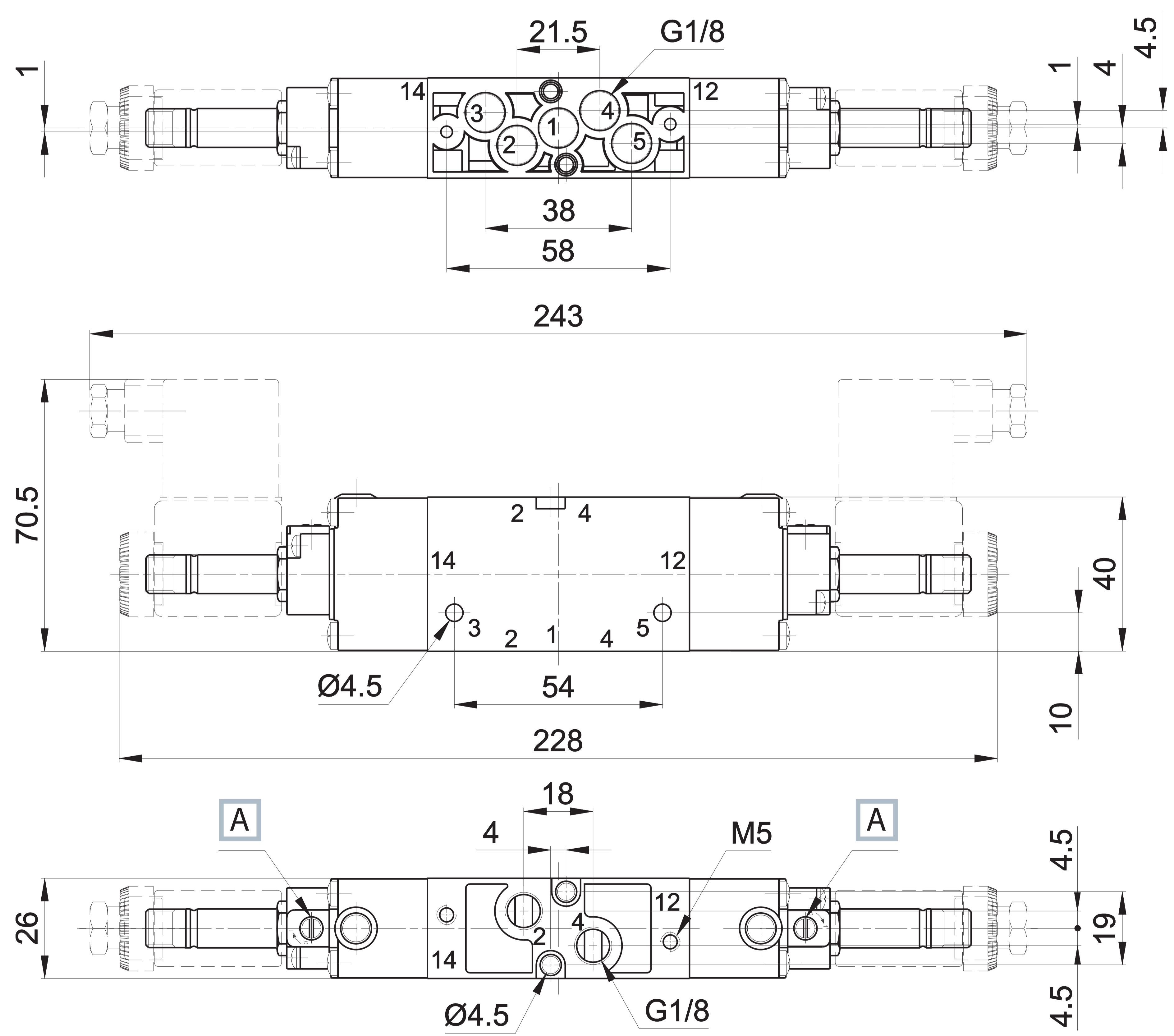
Symbol	Control	Return	Pressure bar	Times (ms)		Weight Kg	Part no.	
				En.	De-en.			
SINGLE ELECTRIC IMPULSE								
5/2		electric amplified	pneumomechanical spring	1,5÷10	15	23	0,214	G-7290
5/2		electric amplified	mechanical spring	1,5÷9	13	34	0,214	G-7291
DOUBLE ELECTRIC IMPULSE								
5/2		electric amplified	electric amplified	0,7÷10	12	12	0,280	G-7299
5/3 c.c.		electric amplified	electric amplified	2÷10	14	18	0,309	G-7399
5/3 o.c.		electric amplified	electric amplified	2÷10	14	18	0,309	G-7499
5/3 p.c.		electric amplified	electric amplified	2÷10	14	18	0,309	G-7599

o.c. = open centres c.c. = closed centres p.c. = pressurized centres

■ Single electric impulse



■ Double electric impulse



A Manual override

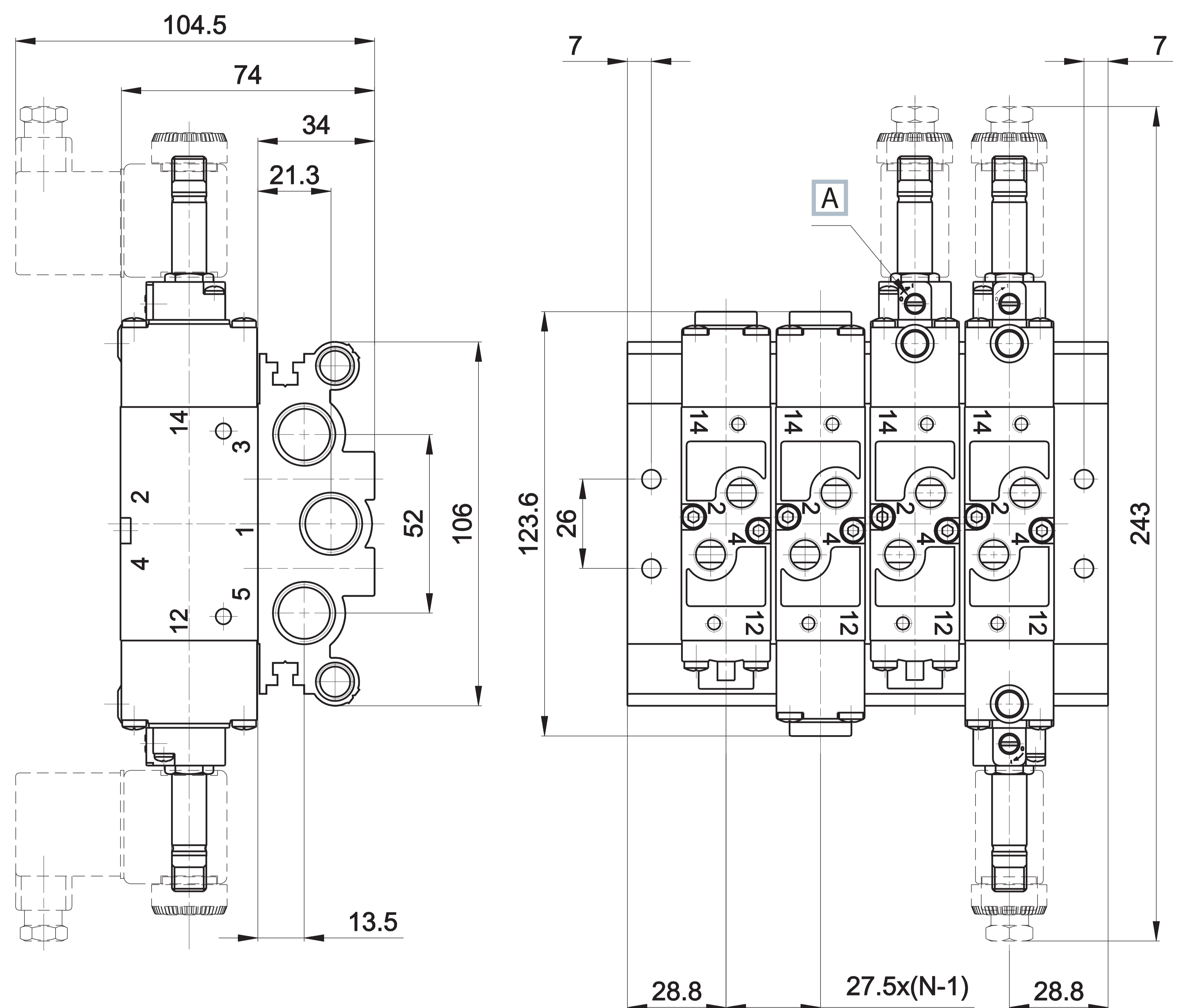
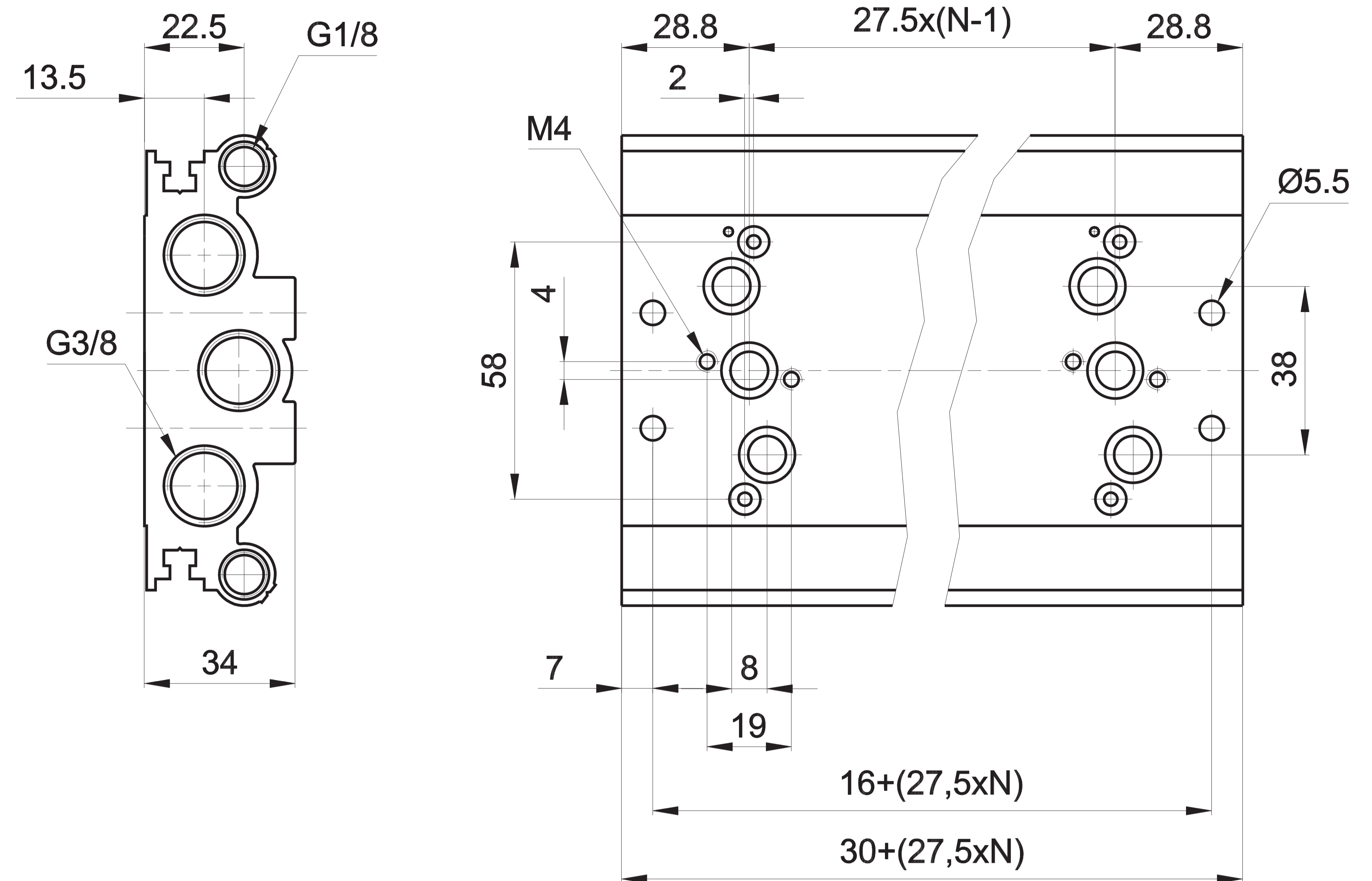
- 1 = Supply port
- 2 - 4 = Use
- 3 - 5 = Exhaust
- 14 = Control
- 12 = Return

The valve is supplied with two plugs to be mounted with loctite onto the unused 2-4 connections
Electropilots are supplied without coil, connector and locking ring

Multiple sub-base G1/8

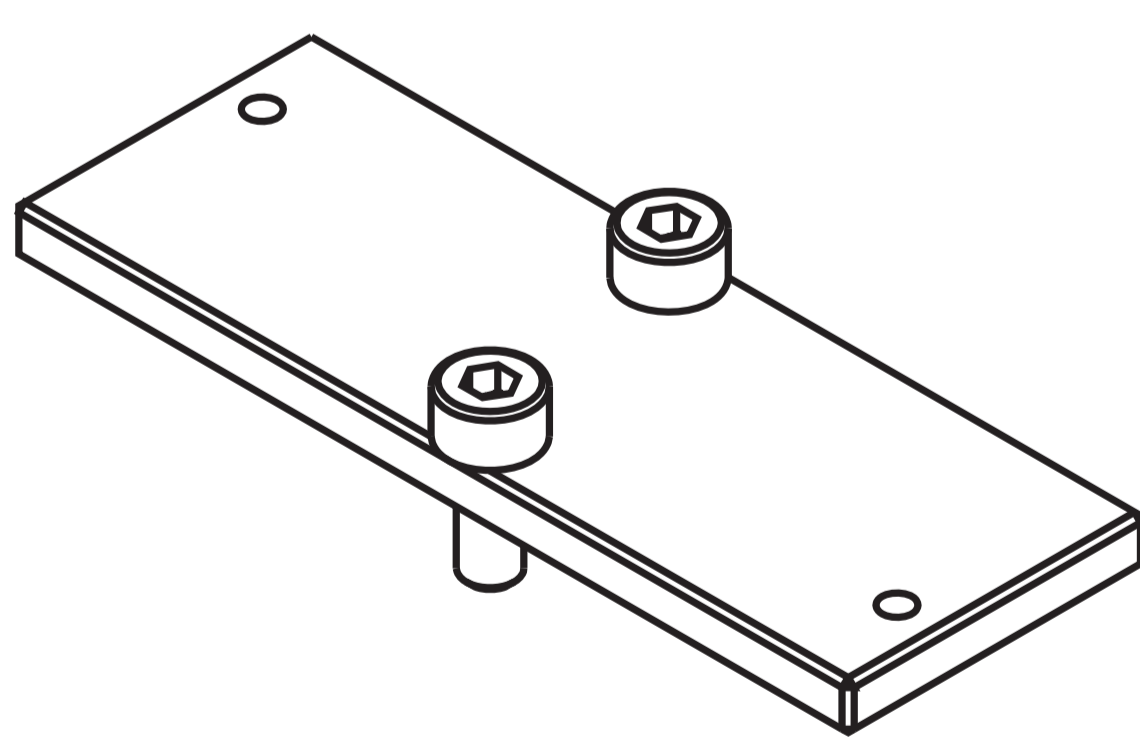


Places N.	Weight Kg	material aluminium	Part no.
2	0,455		G-7900-02
3	0,594		G-7900-03
4	0,733		G-7900-04
5	0,872		G-7900-05
6	1,011		G-7900-06
7	1,150		G-7900-07
8	1,289		G-7900-08
9	1,428		G-7900-09
10	1,567		G-7900-10
11	1,706		G-7900-11
12	1,845		G-7900-12

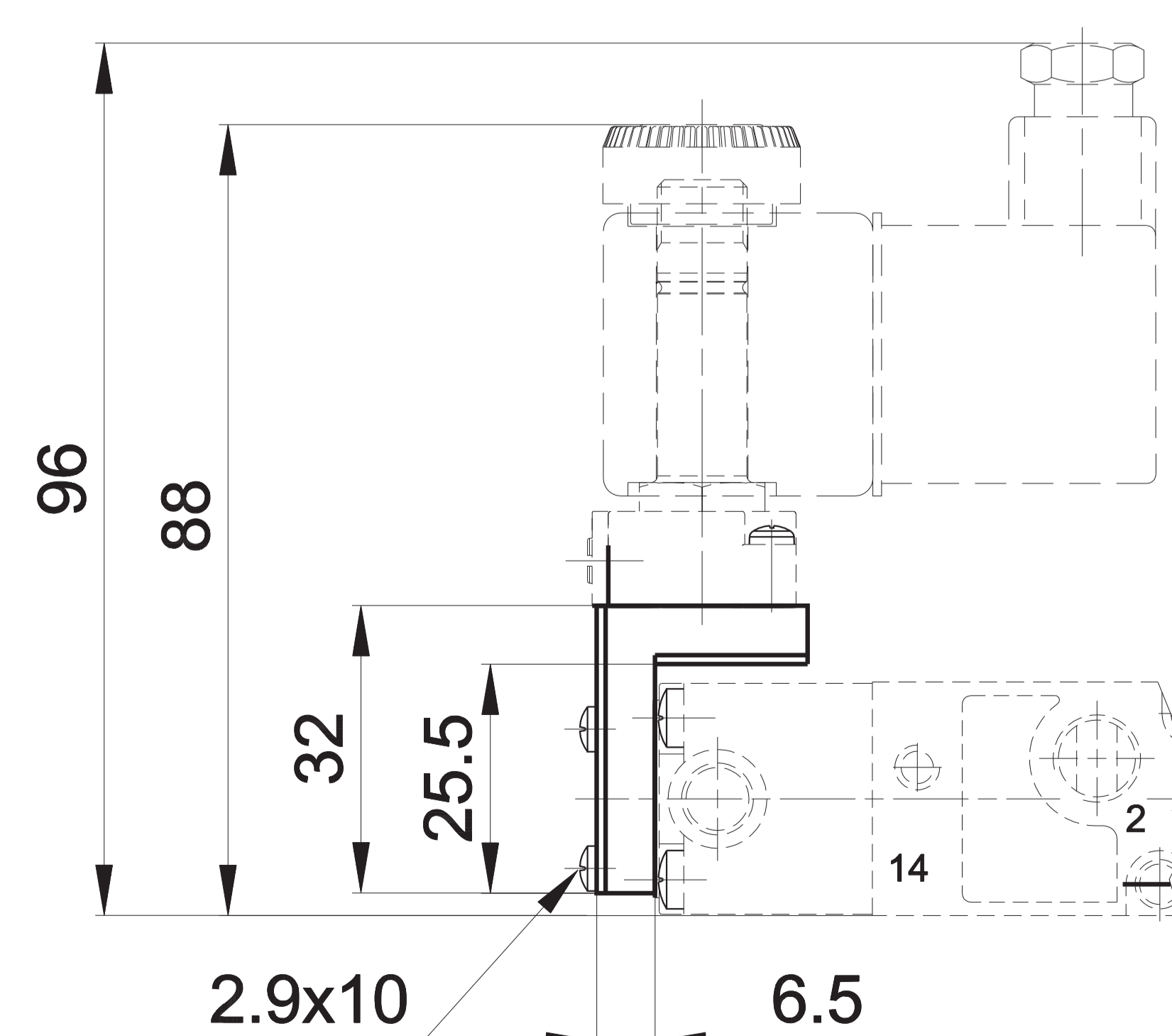
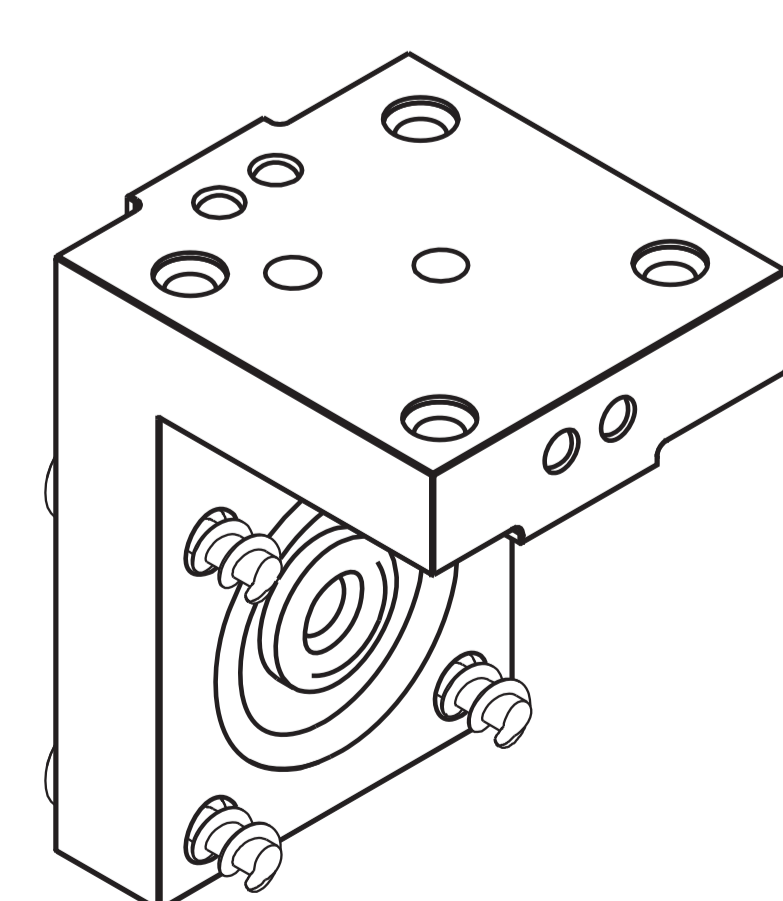


A Manual override

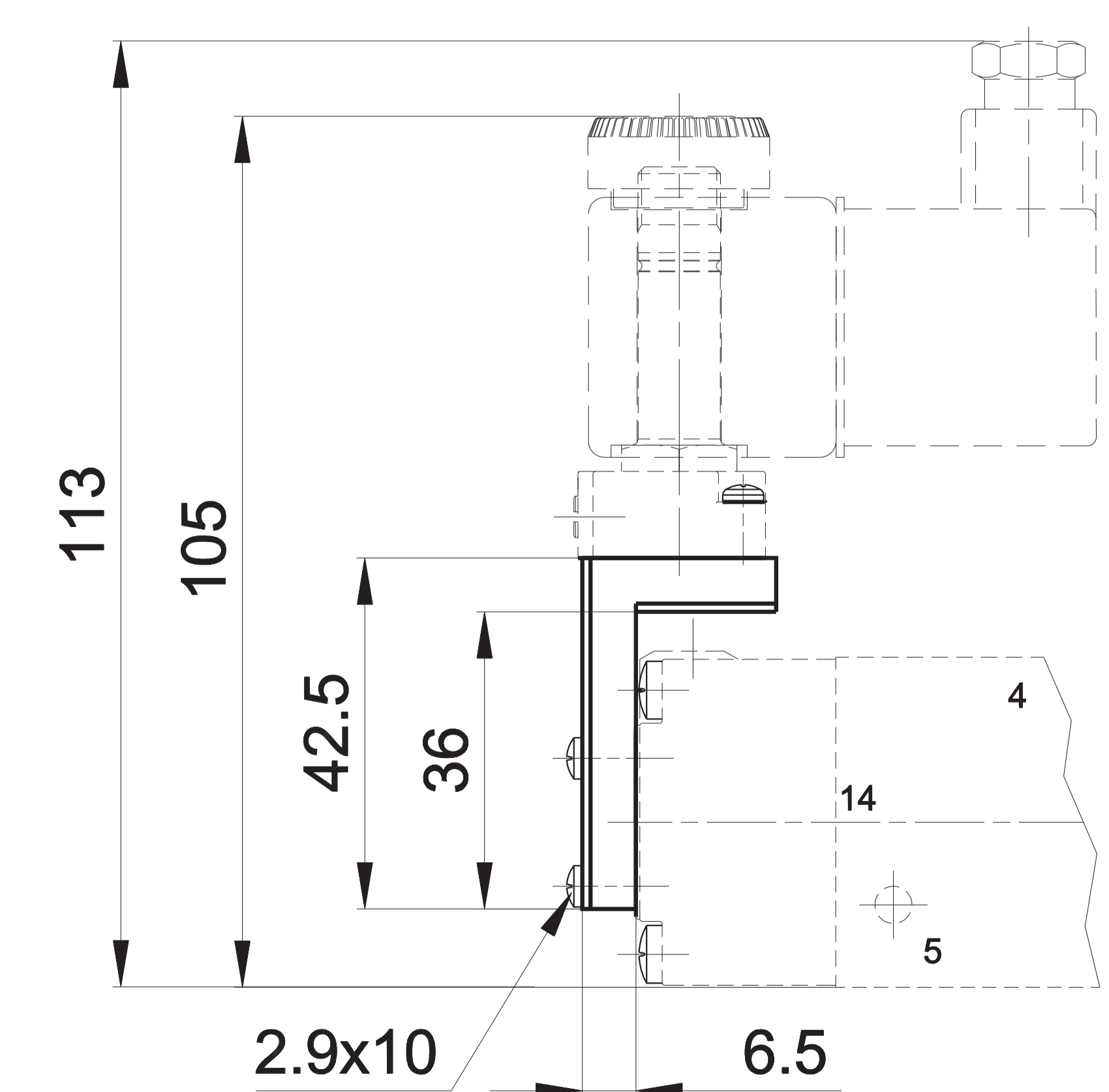
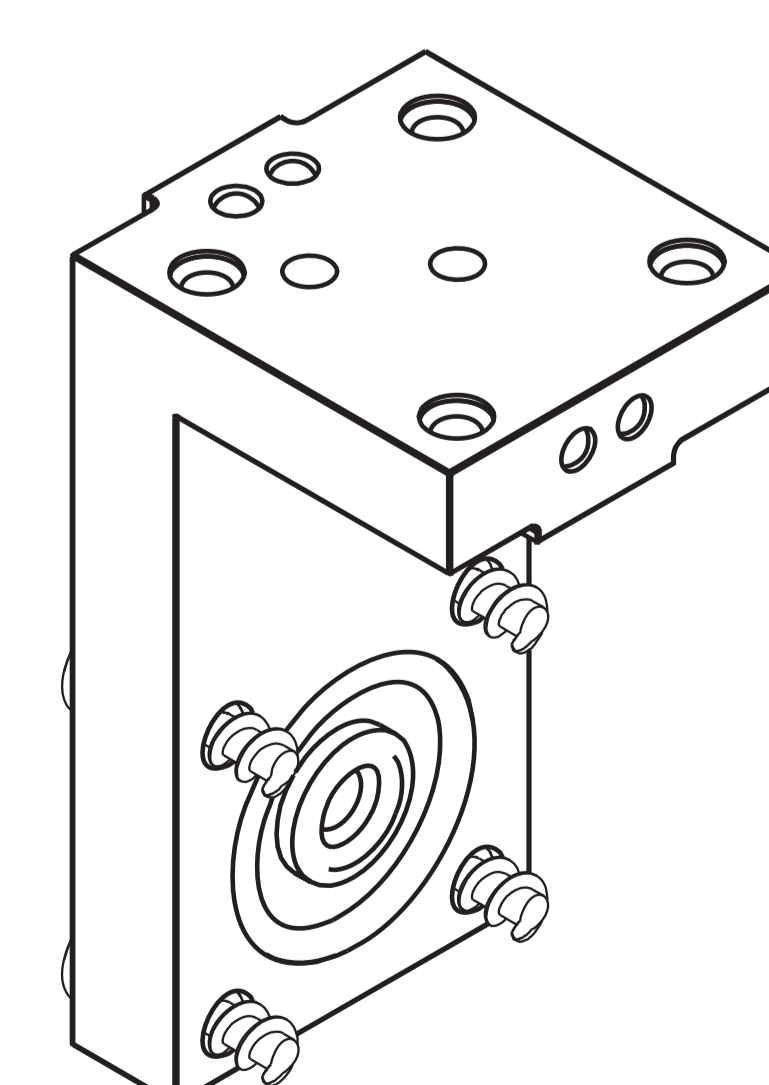
- 1 = Supply port
- 2 - 4 = Use
- 3 - 5 = Exhaust
- 14 = Control
- 12 = Return

G-7885

covering-plate for sub-base
place
weight: 0,019 Kg

AM-5151

"H" option solenoid square
weight: 0,035 Kg

AM-5152

"P" option solenoid square
weight: 0,05 Kg