

## AF

### G1/8 ÷ G1 1/2 Poppet valves for compressed air

- Wide range: G1/8 - G1/4 - G3/8 - G1/2 - G3/4 - G1 - G1 1/2
- Original Univer poppet system appreciated for decades
- Suitable for applications where high flow rate and high cycles rates are required
- G1 - 2/2 version for blowing



### TECHNICAL CHARACTERISTICS

Ambient temperature								+50 °C max
Fluid temperature								-5 ÷ +60 °C
Fluid	filtered air 50 µm, lubricated or not							
Commutation system								poppet
Ways/Positions	<b>2/2 NC (upon request), 3/2 NC, 3/2 NO, 3/2 NC-NO</b>							
Pressure								max 10 bar
Control	pneumatic, indirect electropneumatic							
Return	pneumomechanical spring							
Connections	<b>G1/8</b>	<b>G1/4</b>	<b>G3/8</b>	<b>G1/2</b>	<b>G3/4</b>	<b>G1</b>	<b>G1 1/2</b>	
Nominal Ø (mm)	5,5	8	10	15	19	25	39	
Nominal flow rate (NI/min)	580	1100	1500	5400	6500	13500	35000	

### CONSTRUCTIVE CHARACTERISTICS

Valve body	<b>G1/8 ÷ G1</b> = zamak <b>G1 1/2</b> = aluminium
Seals	nitrile rubber, polyurethane
Actuators	<b>G1/8 ÷ G1</b> = zamak <b>G1 1/2</b> = aluminium
Spool	<b>G1/8 ÷ G3/8</b> = aluminium <b>G1/2 ÷ G1 1/2</b> = steel + plastic

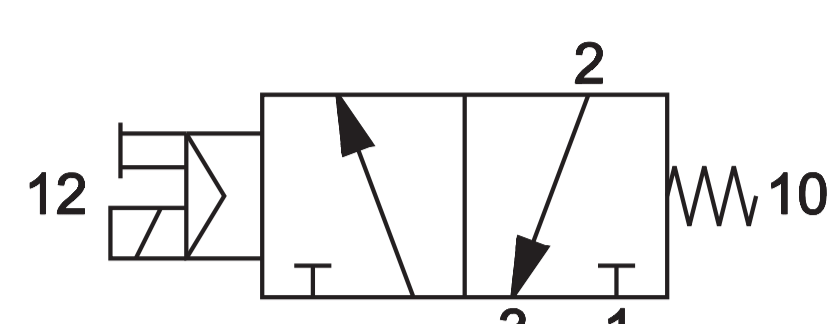
### ELECTRIC CHARACTERISTICS

	<b>G1/8 G1/4</b>	<b>G1/4 ÷ G1 1/2</b>
Electropilot	U1	U2
Coil	DA	DB
Power consumption	3,5 W (DC) - 5 VA (AC)	11 W (DC) - 10 VA (AC)
Connector	AM-5110	AM-5111
Voltage	12 V DC - 24 V DC - 24 V AC - 110 V AC - 230 V AC	
Manual override	with 2 position screw	

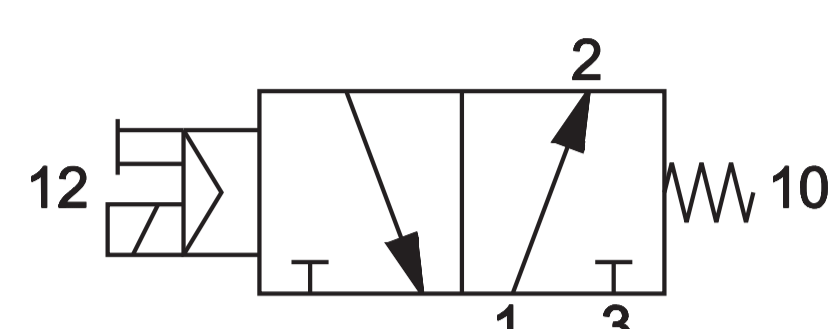
**G1/8 - G1/4 - G3/8 Electrovalves**



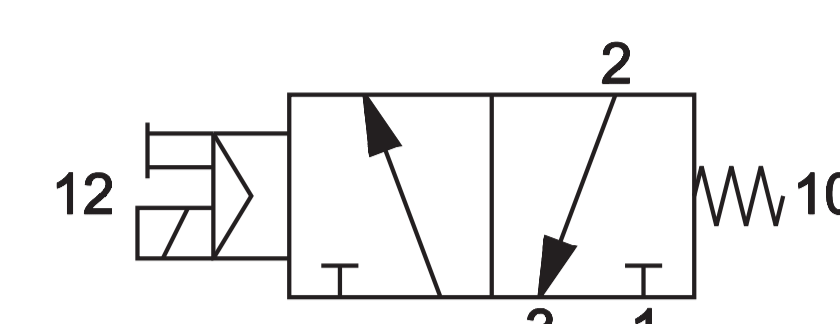
3/2 NC G1/8  
AF-2500



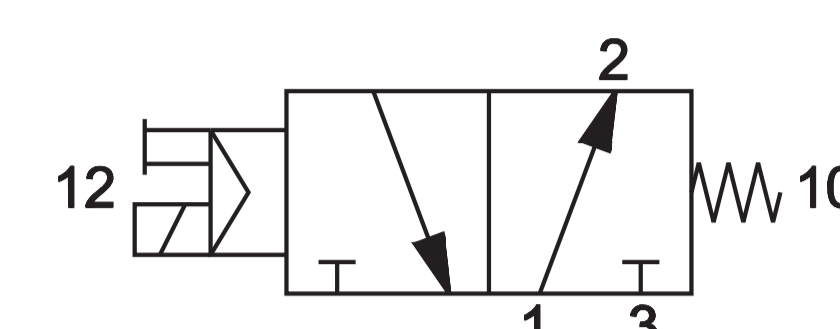
3/2 NO G1/8  
AF-2501



3/2 NC G1/4 - G3/8  
AF-2510  
AF-2517  
AF-2520  
AF-2524

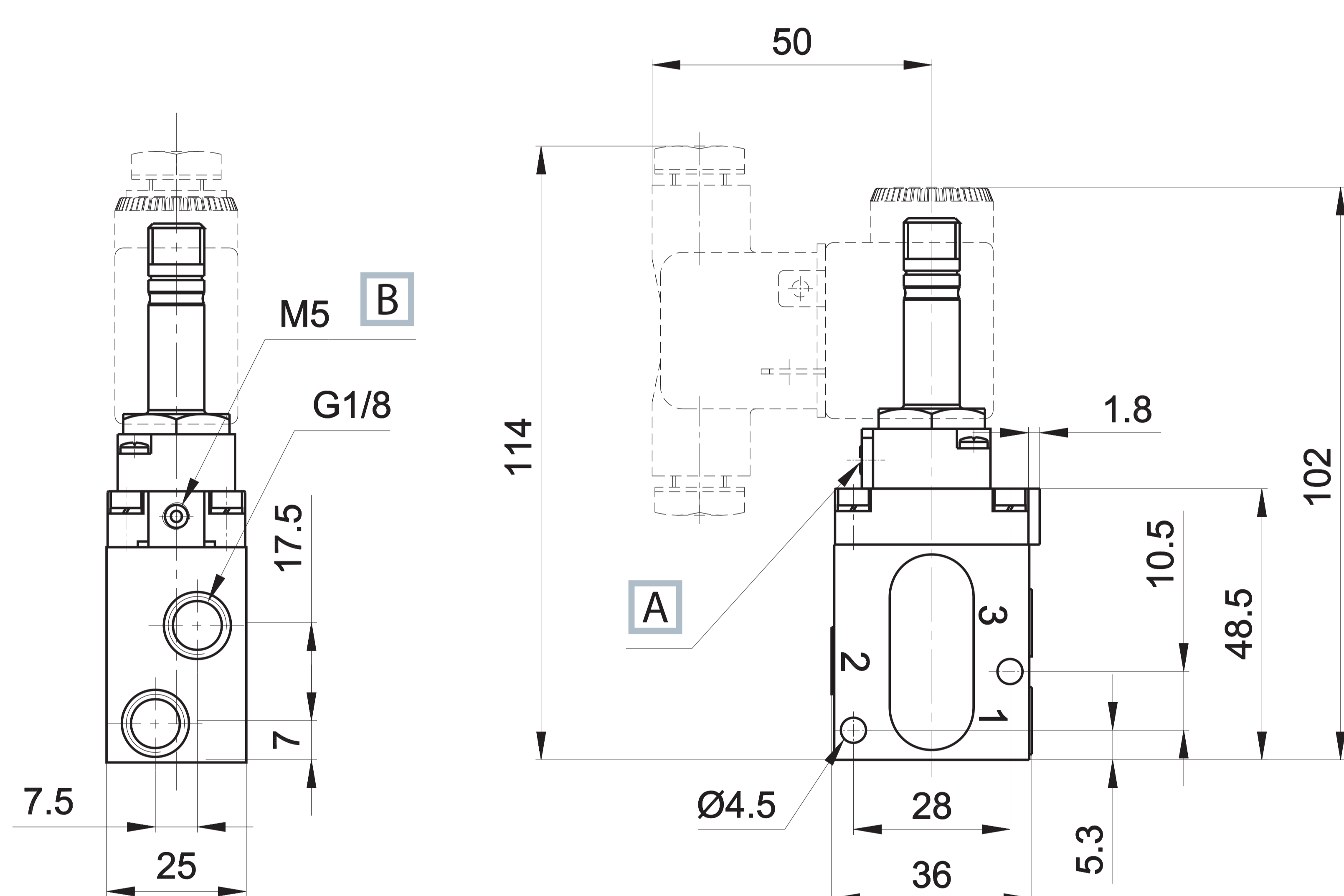


3/2 NO G1/4 - G3/8  
AF-2511  
AF-2518  
AF-2521  
AF-2525



	Connect.	Control	Return	Flow rate (NI/min)	Ø mm	Times (ms)		Pressure bar		Weight Kg	Coil	Part no.
						En.	De-en.	min.	max.			
3/2 NC	G1/8	electric amplified	pneumomechanical spring	580	5,5	15	20	1,5	10	0,25	U1	<b>AF-2500</b>
	G1/4	electric amplified	pneumomechanical spring	1100	8	20	23	1,6	10	0,58	U1	<b>AF-2510</b>
	G1/4	electric amplified	pneumomechanical spring	1100	8	20	23	1,6	10	0,70	U2	<b>AF-2517</b>
	G3/8	electric amplified	pneumomechanical spring	1500	10	20	23	1,6	10	0,56	U1	<b>AF-2520</b>
	G3/8	electric amplified	pneumomechanical spring	1500	10	20	23	1,6	10	0,70	U2	<b>AF-2524</b>
3/2 NO	G1/8	electric amplified	pneumomechanical spring	580	5,5	15	20	1,5	10	0,25	U1	<b>AF-2501</b>
	G1/4	electric amplified	pneumomechanical spring	1100	8	15	20	1,6	10	0,58	U1	<b>AF-2511</b>
	G1/4	electric amplified	pneumomechanical spring	1100	8	15	20	1,6	10	0,70	U2	<b>AF-2518</b>
	G3/8	electric amplified	pneumomechanical spring	1500	10	15	20	1,6	10	0,56	U1	<b>AF-2521</b>
	G3/8	electric amplified	pneumomechanical spring	1500	10	15	20	1,6	10	0,70	U2	<b>AF-2525</b>

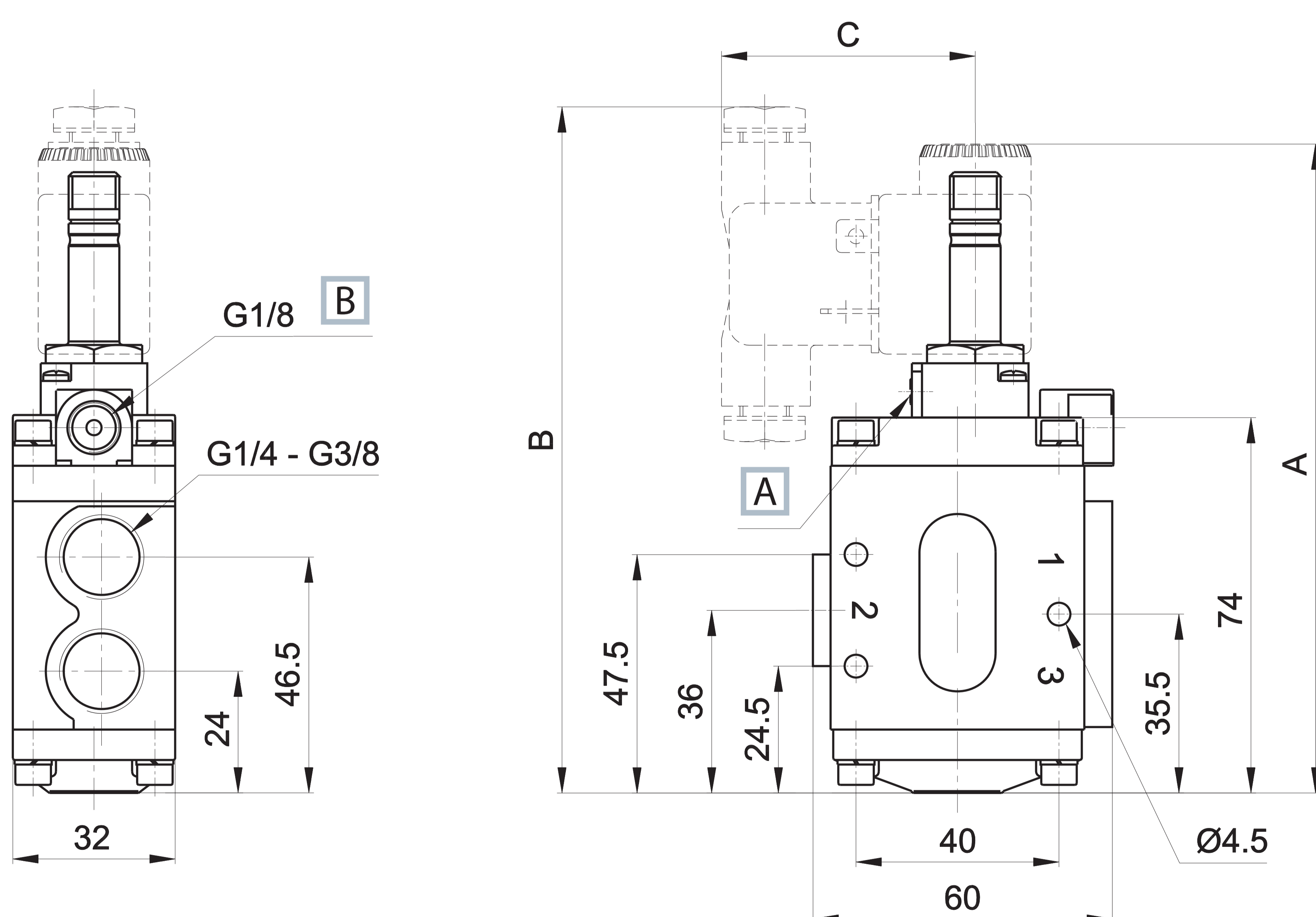
**G1/8**



1 = Supply port  
2 = Use  
3 = Exhaust

**A** Manual override  
**B** External servoassistance of the pilot

**G1/4 - G3/8**



1 = Supply port  
2 = Use  
3 = Exhaust

**A** Manual override  
**B** External servoassistance of the pilot

	A	B	C
U1	129	136	50
U2	140,5	150	51,5

Upon request:

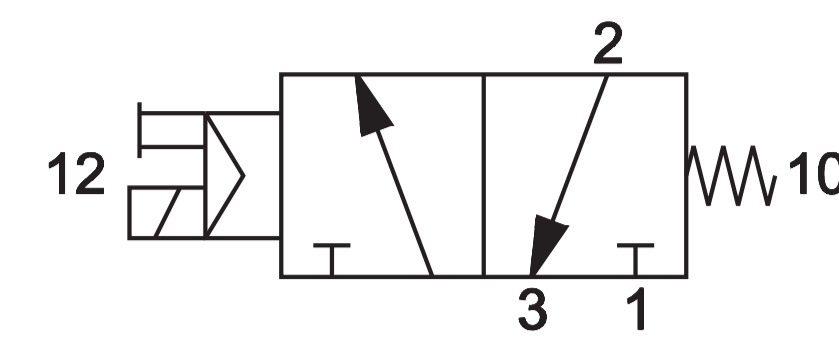
- external servoassistance of the pilot
- G1/4 - G3/8 U2 without manual override

Electrovalves are supplied without coil, connector and locking ring

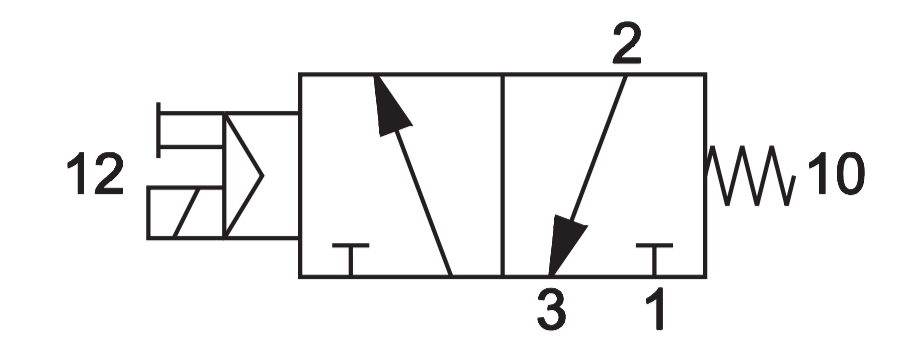
G1/2 - G3/4 - G1 - G1 1/2 Electrovalves



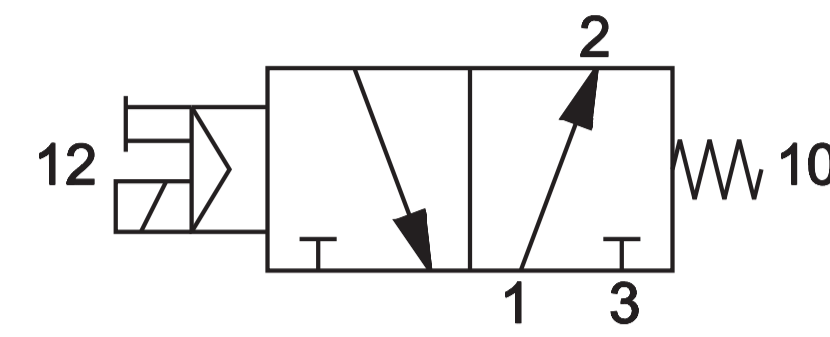
3/2 NC G1/2 - G3/4 - G1  
 AF-2530  
 AF-2540  
 AF-2545



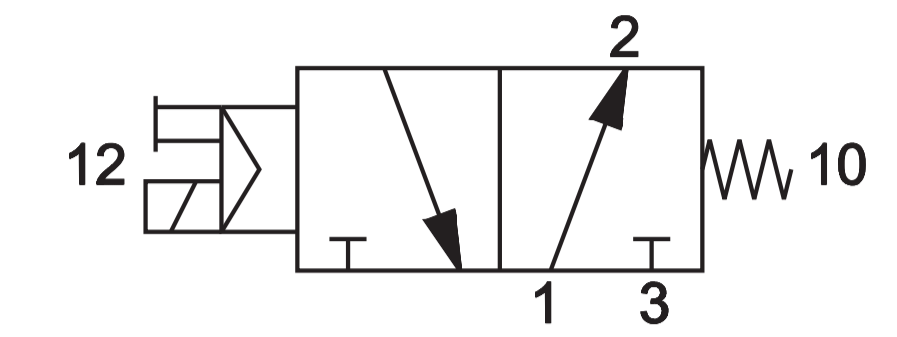
3/2 NC G1 1/2  
 AF-2565



3/2 NO G1/2 - G3/4 - G1  
 AF-2531  
 AF-2541  
 AF-2546

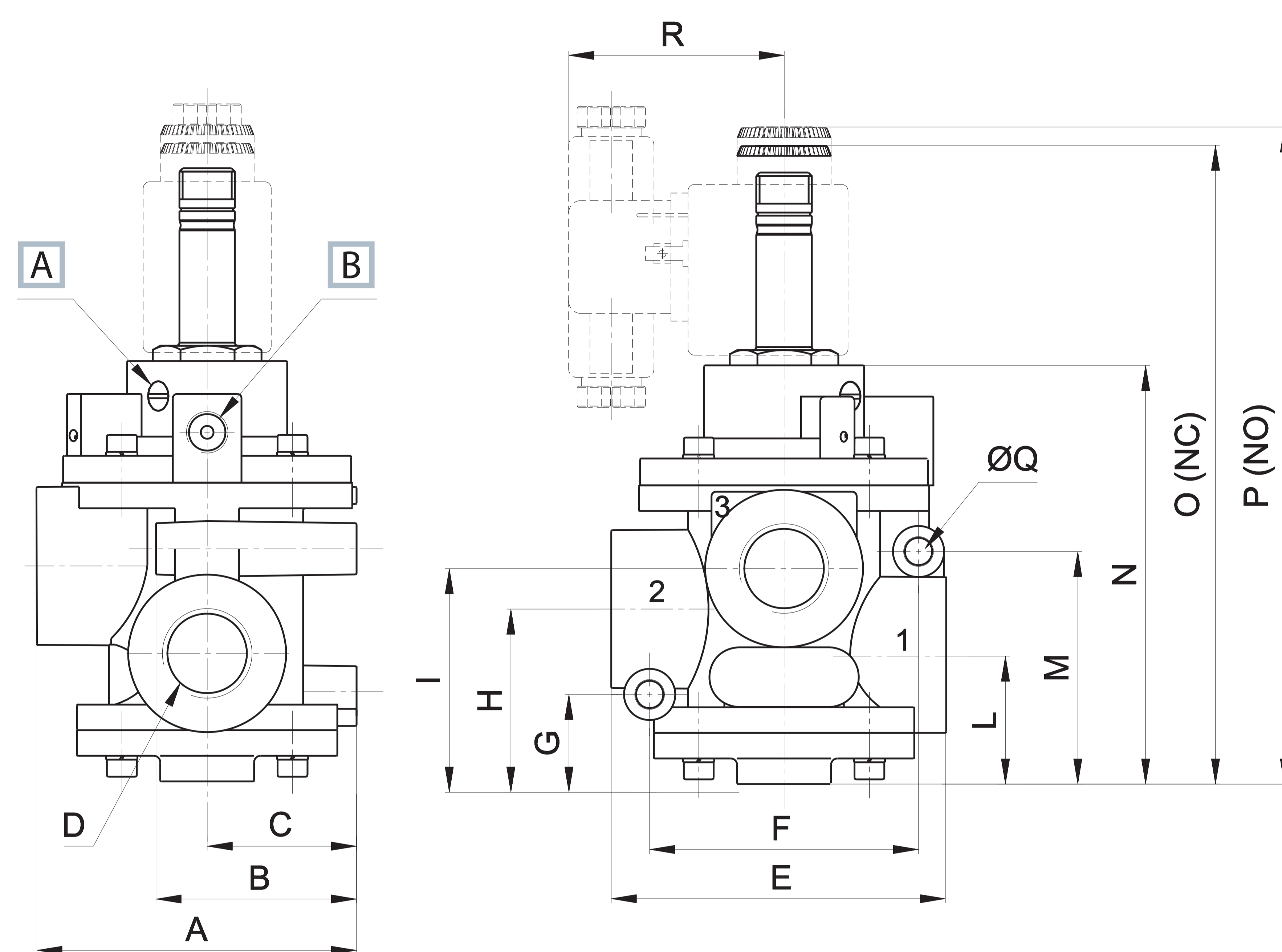


3/2 NO G1 1/2  
 AF-2561



	Connect.	Control	Return	Flow rate (Nl/min)	Ø mm	Times (ms)		Pressure bar		Weight Kg	Coil	Part no.
						En.	De-en.	min.	max.			
3/2 NC	G1/2	electric amplified	pneumomechanical spring	5400	15	17	27	2	10	1,19	U2	<b>AF-2530</b>
	G3/4	electric amplified	pneumomechanical spring	6500	19	17	27	2	10	1,13	U2	<b>AF-2540</b>
	G1	electric amplified	pneumomechanical spring	13500	25	20	32	2,2	10	1,62	U2	<b>AF-2545</b>
	G1 1/2	electric amplified	pneumomechanical spring	35000	39	47	22	2,5	10	2,27	U2	<b>AF-2565</b>
3/2 NO	G1/2	electric amplified	pneumomechanical spring	5400	15	30	22	3	10	1,19	U2	<b>AF-2531</b>
	G3/4	electric amplified	pneumomechanical spring	6500	19	30	22	3	10	1,13	U2	<b>AF-2541</b>
	G1	electric amplified	pneumomechanical spring	13500	25	28	23	3	10	1,62	U2	<b>AF-2546</b>
	G1 1/2	electric amplified	pneumomechanical spring	35000	39	55	20	3	10	2,27	U2	<b>AF-2561</b>

■ G1/2 - G3/4 - G1

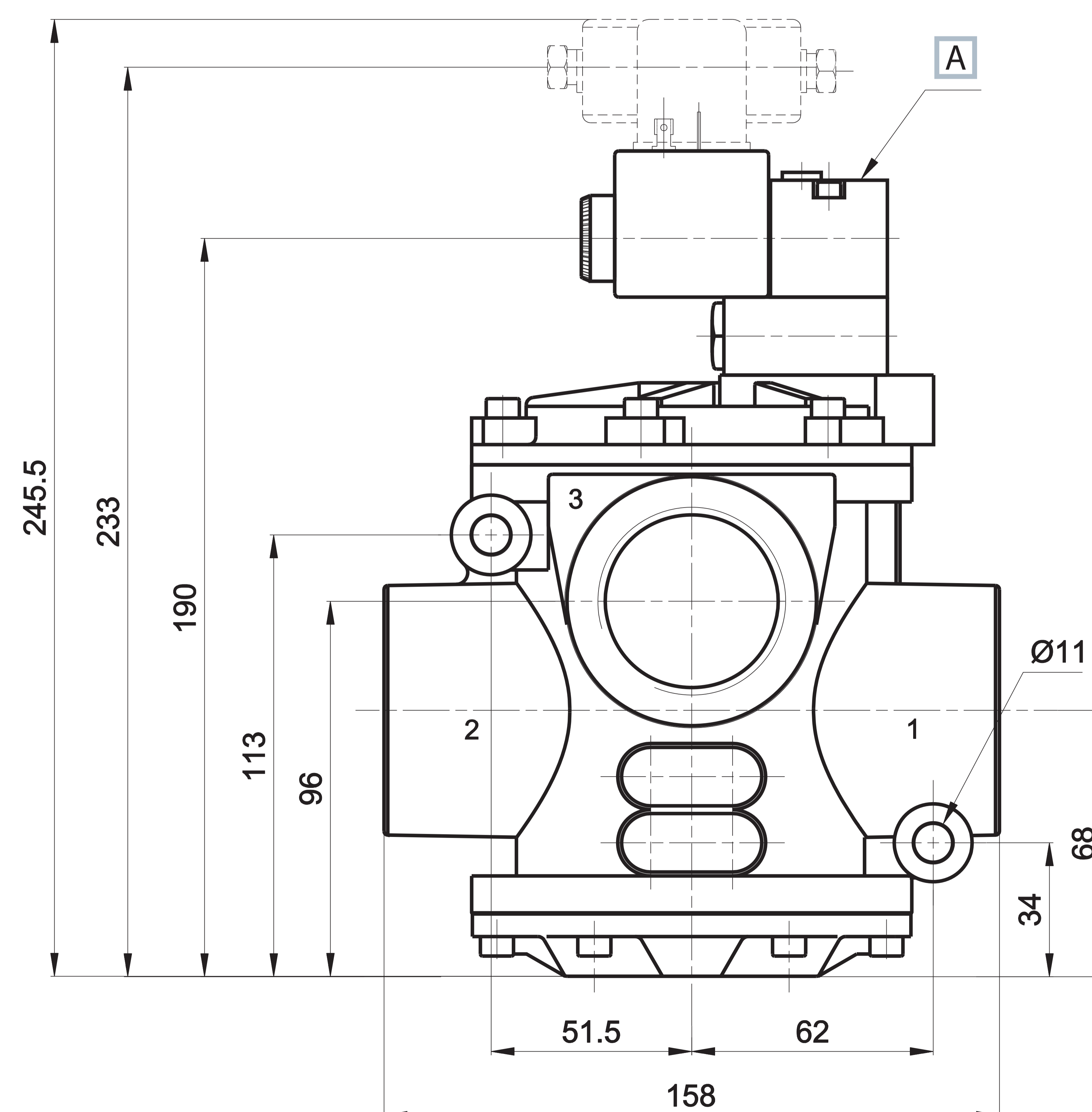
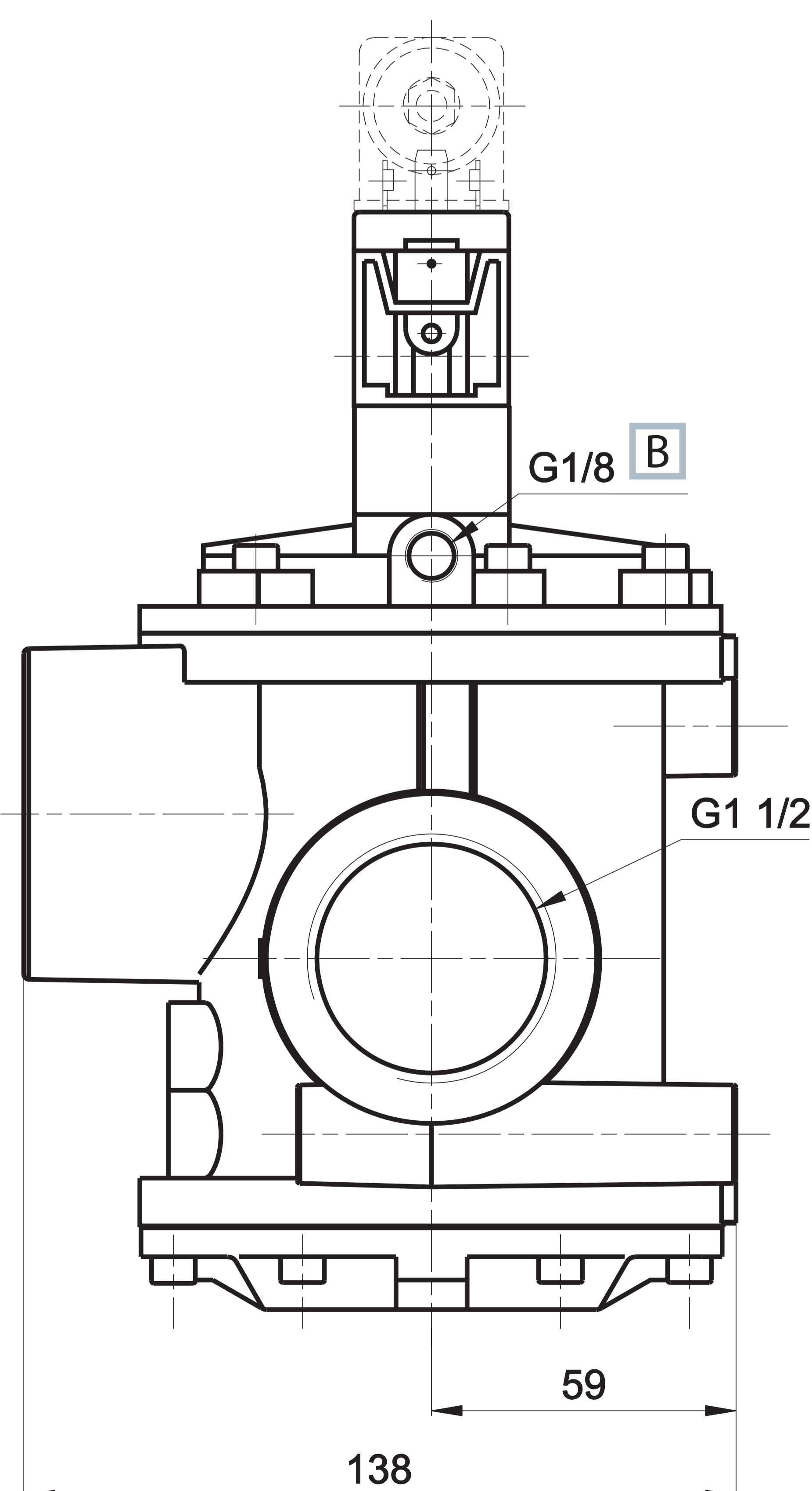


1 = Supply port  
 2 = Use  
 3 = Exhaust

A Manual override  
 B External servoassistance of the pilot

	A	B	C	D	E	F	G	H	I	L	M	N	O	P	Q	R
G1/2	75	47	35	G1/2	78,5	63	21	41	50,5	30	54,5	100	150	154	6,4	50,5
G3/4	75	47	35	G3/4	78,5	63	21	41	50,5	30	54,5	100	150	154	6,4	50,5
G1	89	55	40	G1	101	76	25,5	51	64	38	62,5	115	167	175	8,4	50

■ G1 1/2

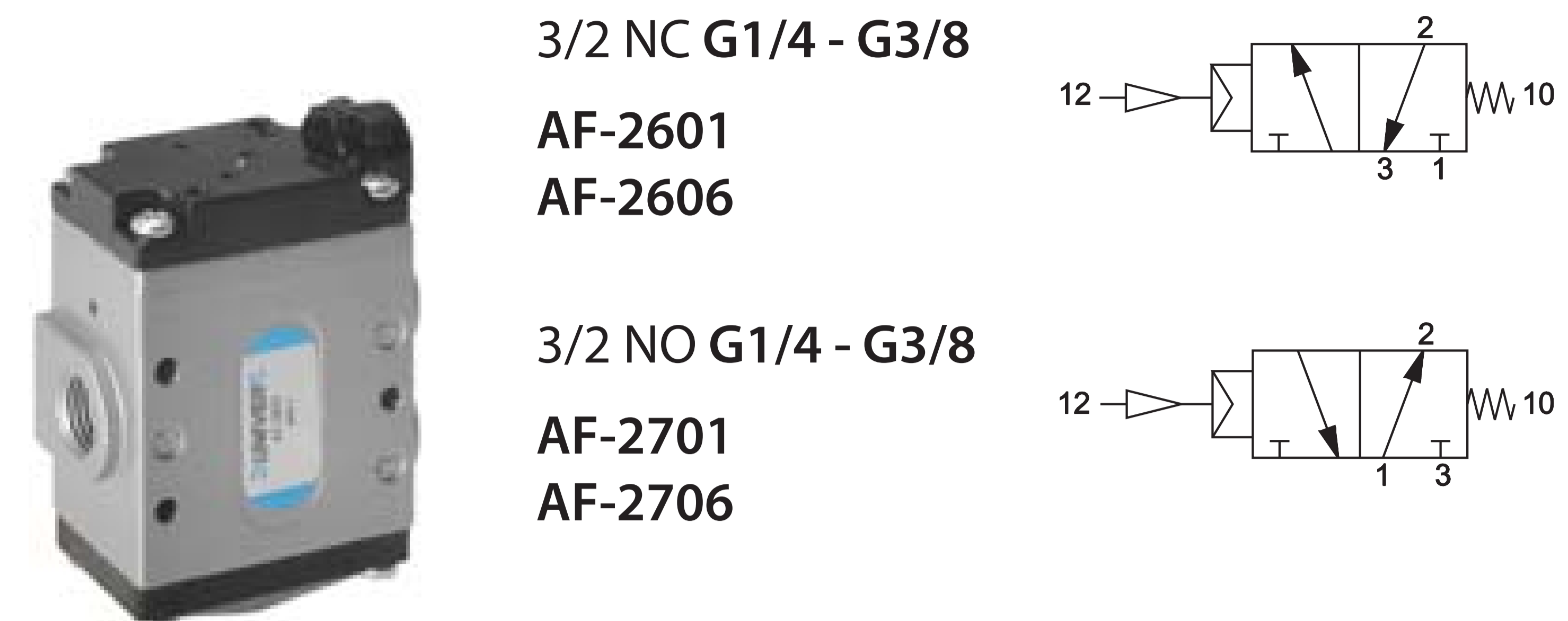
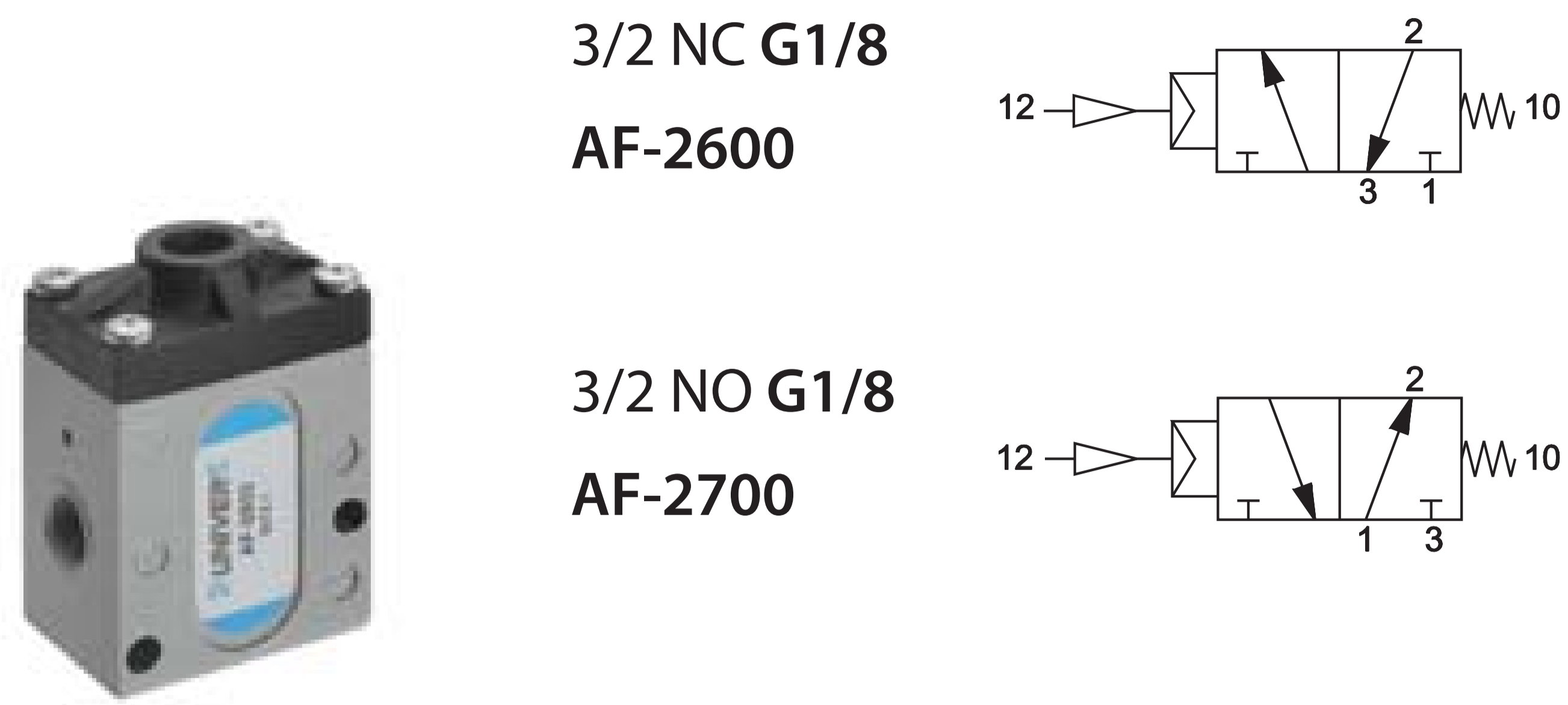


1 = Supply port  
 2 = Use  
 3 = Exhaust

A Manual override  
 B External servoassistance of the pilot

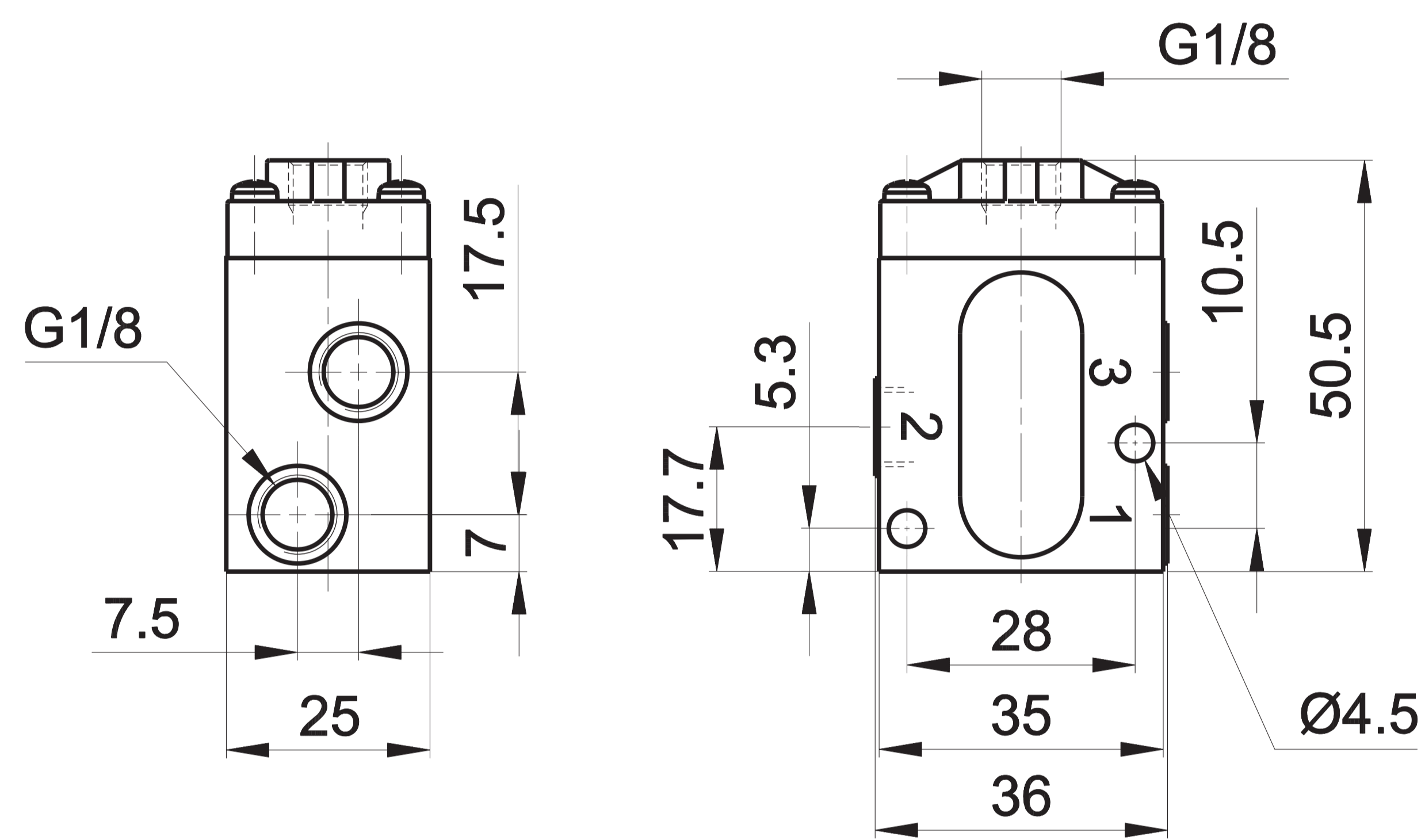
Electrovalves are supplied without coil, connector and locking ring

**G1/8 - G1/4 - G3/8 Servo valves**



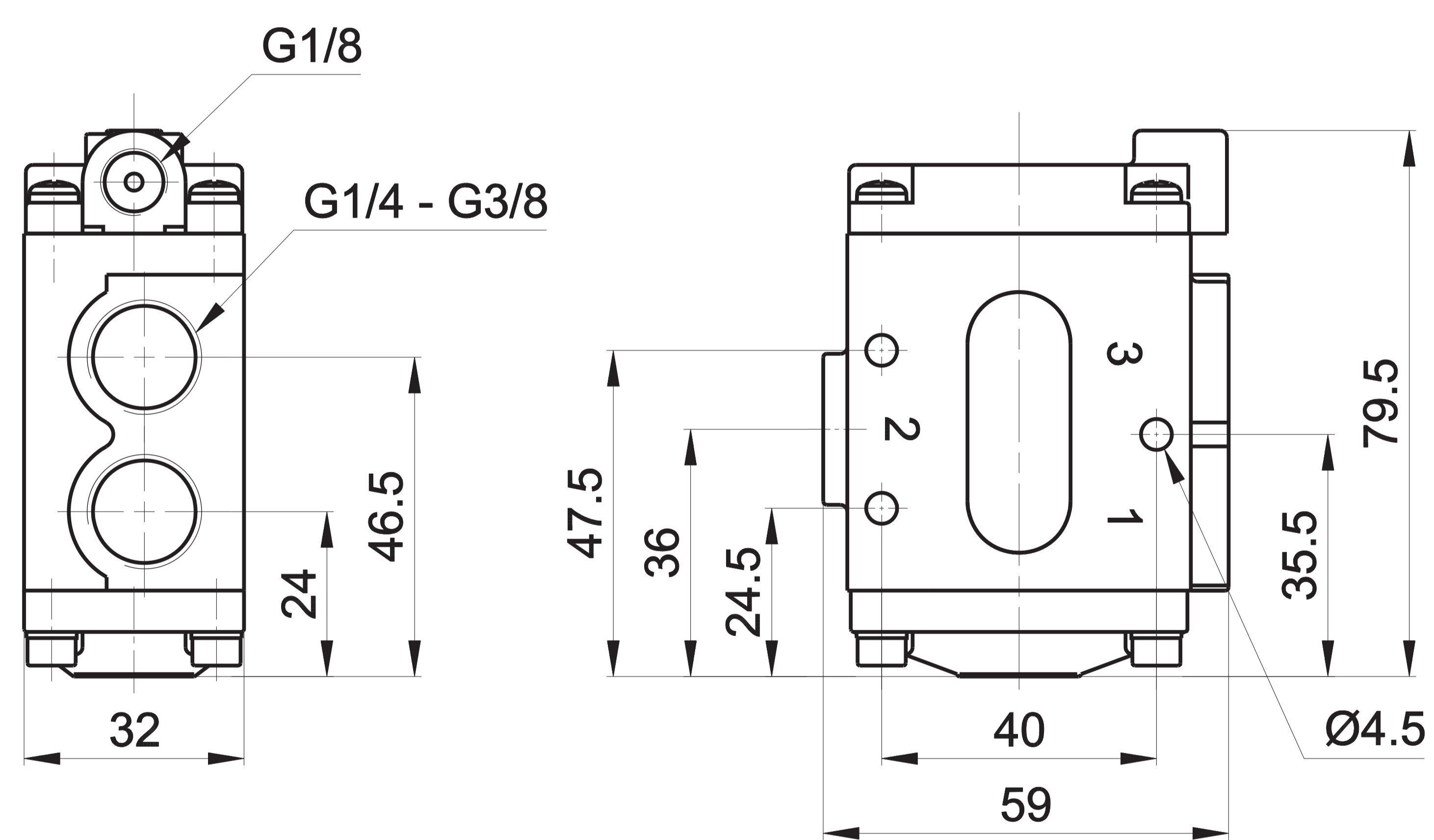
	Connect.	Control	Return	Flow rate (Nl/min)	Ø mm	Times (ms)		Pressure bar		Weight Kg	Part no.
						En.	De-en.	supply	control		
3/2 NC	G1/8	pneumatic amplified	pneumomechanical spring	580	5,5	5	8	6	3,5	0,21	<b>AF-2600</b>
	G1/4	pneumatic amplified	pneumomechanical spring	1100	8	5	7	6	4	0,54	<b>AF-2601</b>
	G3/8	pneumatic amplified	pneumomechanical spring	1500	10	5	7	6	4	0,52	<b>AF-2606</b>
3/2 NO	G1/8	pneumatic amplified	pneumomechanical spring	580	5,5	5	8	6	3,5	0,21	<b>AF-2700</b>
	G1/4	pneumatic amplified	pneumomechanical spring	1100	8	5	7	6	4	0,54	<b>AF-2701</b>
	G3/8	pneumatic amplified	pneumomechanical spring	1500	10	5	7	6	4	0,52	<b>AF-2706</b>

**G1/8**



1 = Supply port  
2 = Use  
3 = Exhaust

**G1/4 - G3/8**

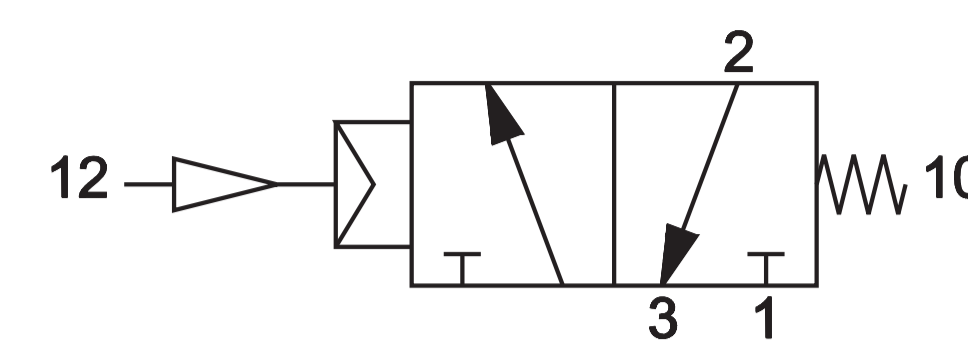


1 = Supply port  
2 = Use  
3 = Exhaust

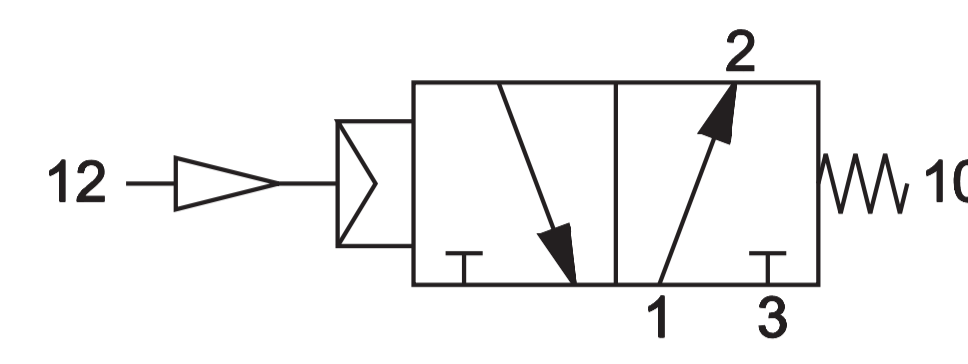
**G1/2 - G3/4 - G1 - G1 1/2 Servo valves**



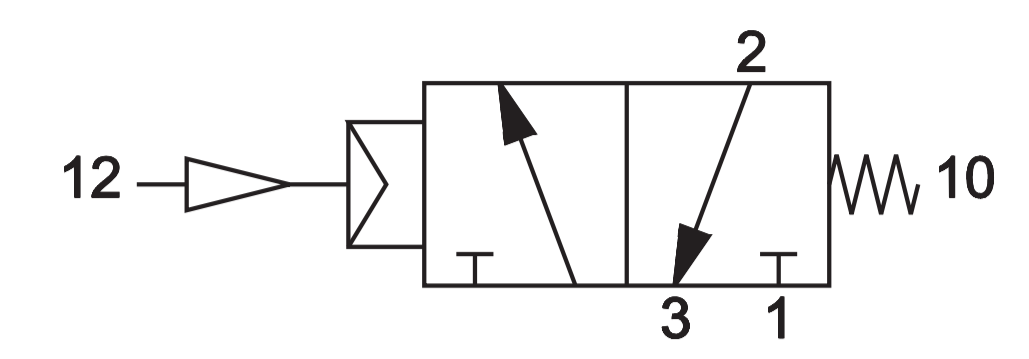
3/2 NC G1/2 - G3/4 - G1  
**AF-2603**  
**AF-2610**  
**AF-2615**



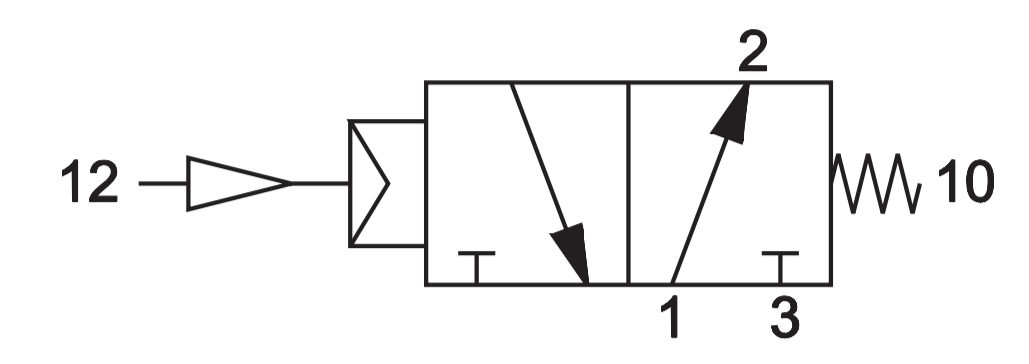
3/2 NO G1/2 - G3/4 - G1  
**AF-2603**  
**AF-2610**  
**AF-2615**



3/2 NC G1 1/2  
**AF-2620**



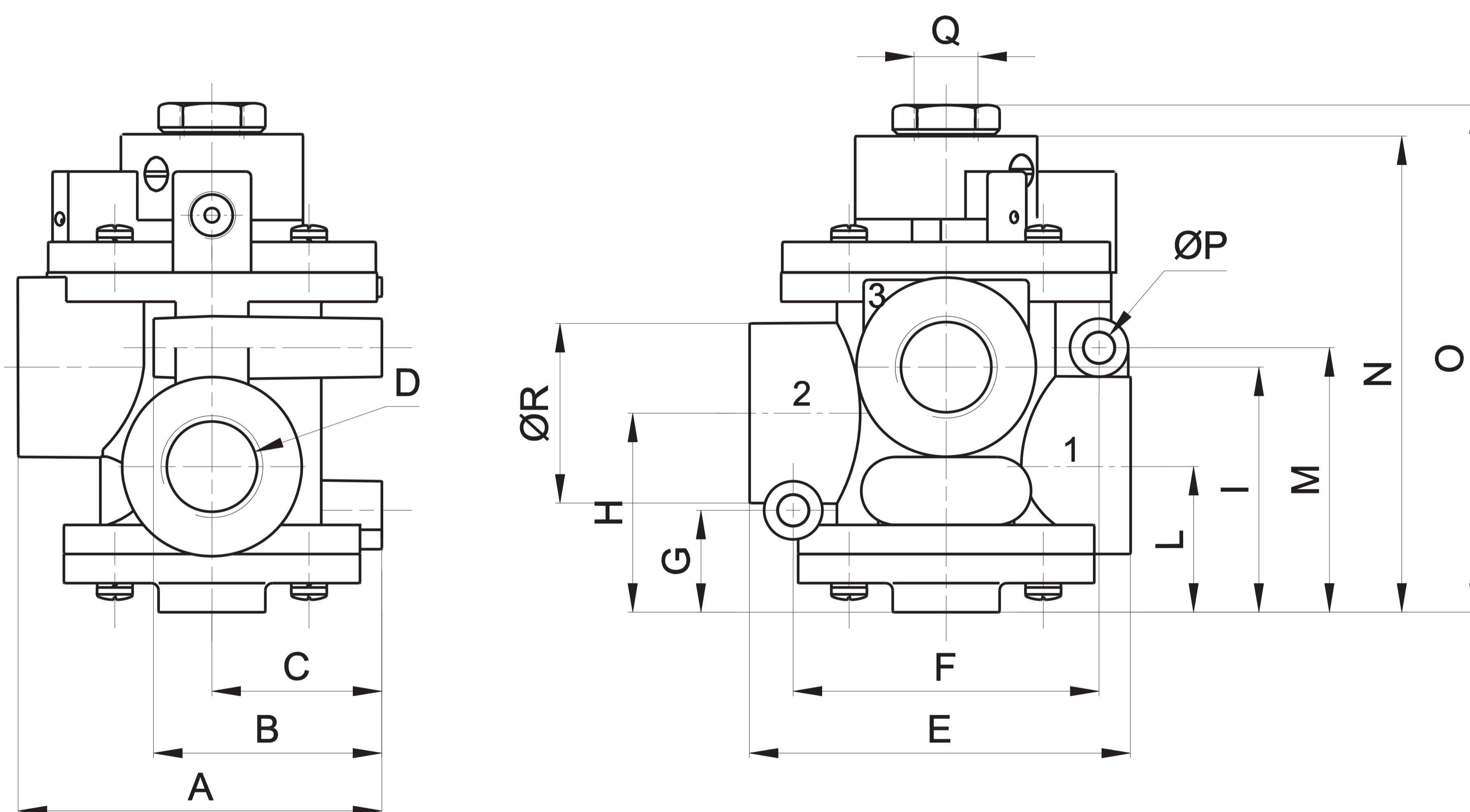
3/2 NO G1 1/2  
**AF-2620**



3/2 NC-NO

Connect.	Control	Return	Flow rate (Nl/min)	Ø mm	Times (ms)		Pressure bar		Weight Kg	Part no.
					En.	De-en.	supply	control		
G1/2	pneumatic amplified	pneumomechanical spring	5400	15	7	10	6	4	1,27	<b>AF-2603</b>
G3/4	pneumatic amplified	pneumomechanical spring	6500	19	7	10	6	4	1,10	<b>AF-2610</b>
G1	pneumatic amplified	pneumomechanical spring	13500	25	10	12	6	4	1,59	<b>AF-2615</b>
G1 1/2	pneumatic amplified	pneumomechanical spring	35000	39	36	15	6	4	2,19	<b>AF-2620</b>

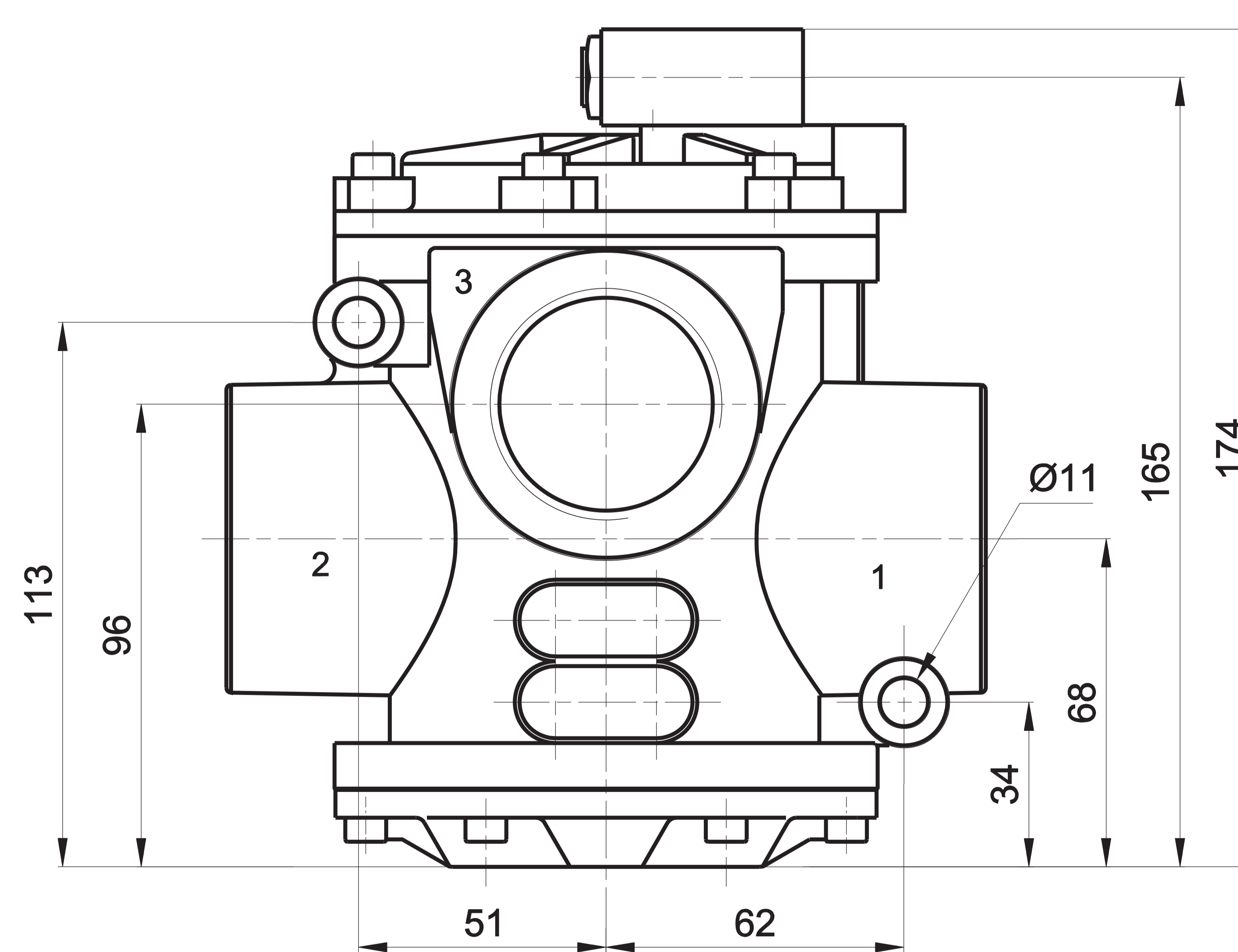
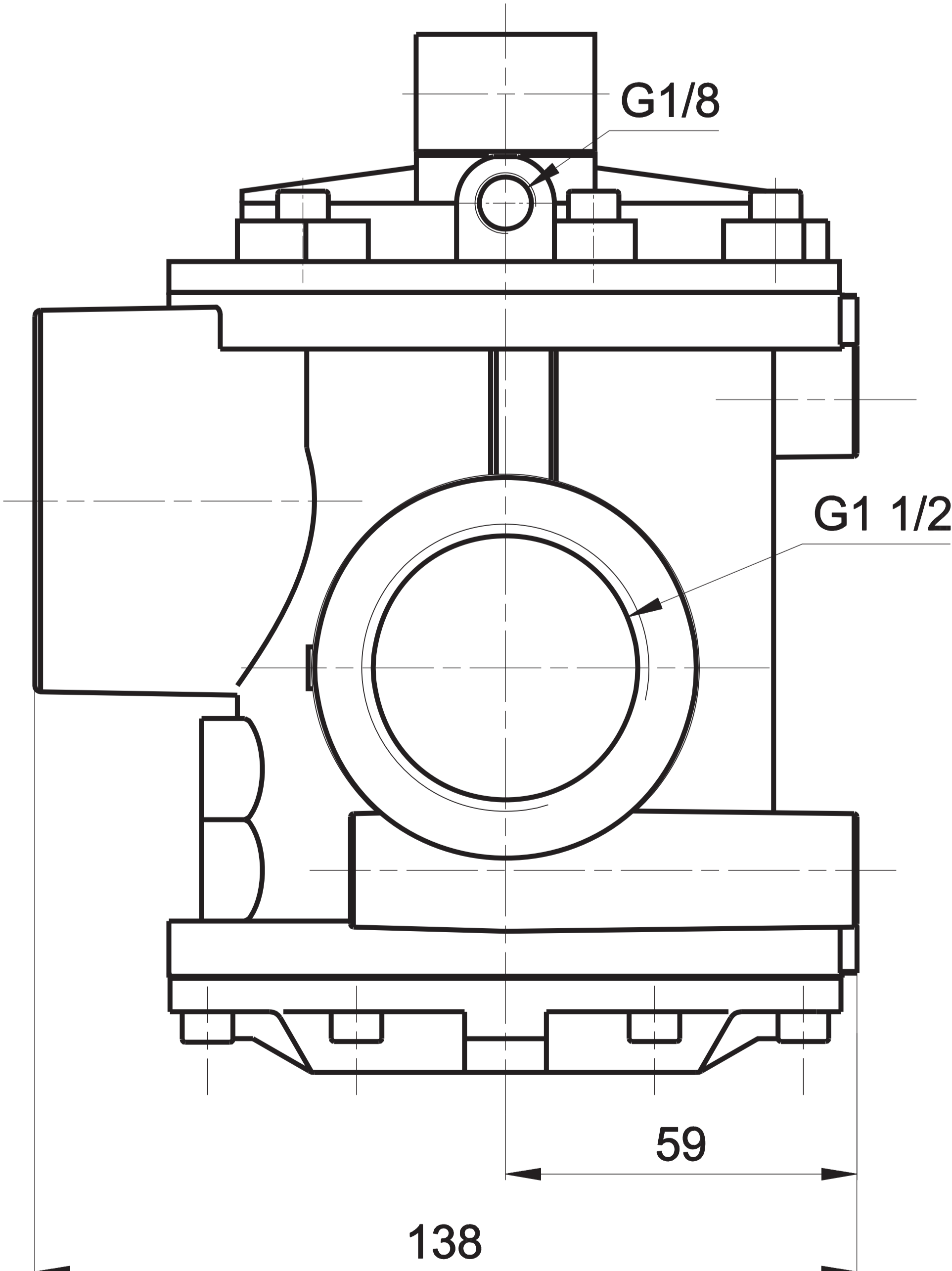
**G1/2 - G3/4 - G1**



1 = Supply port  
 2 = Use  
 3 = Exhaust

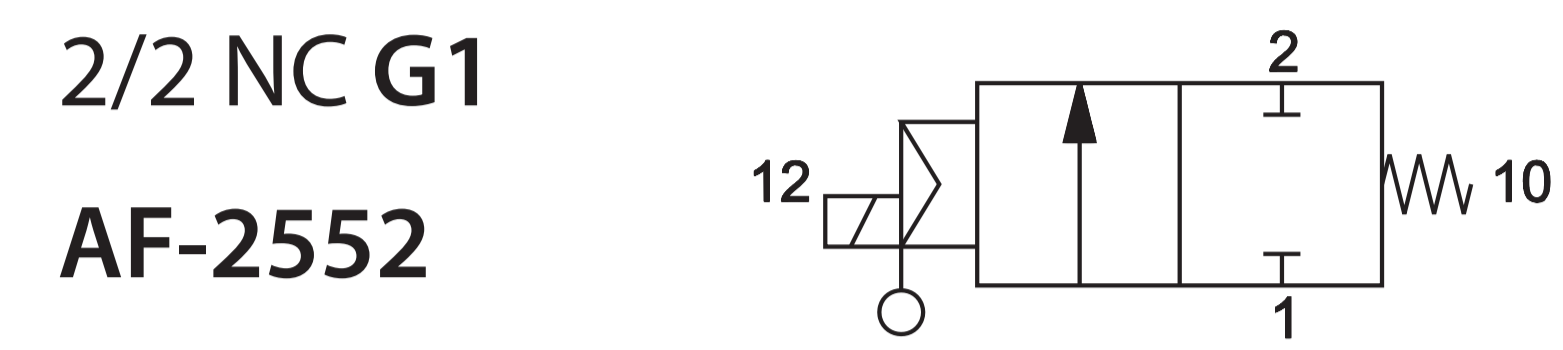
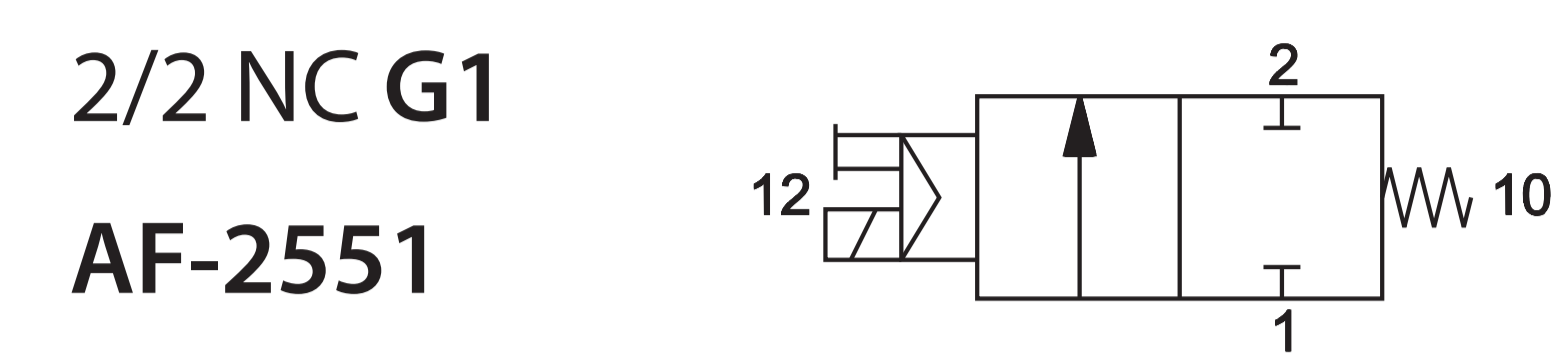
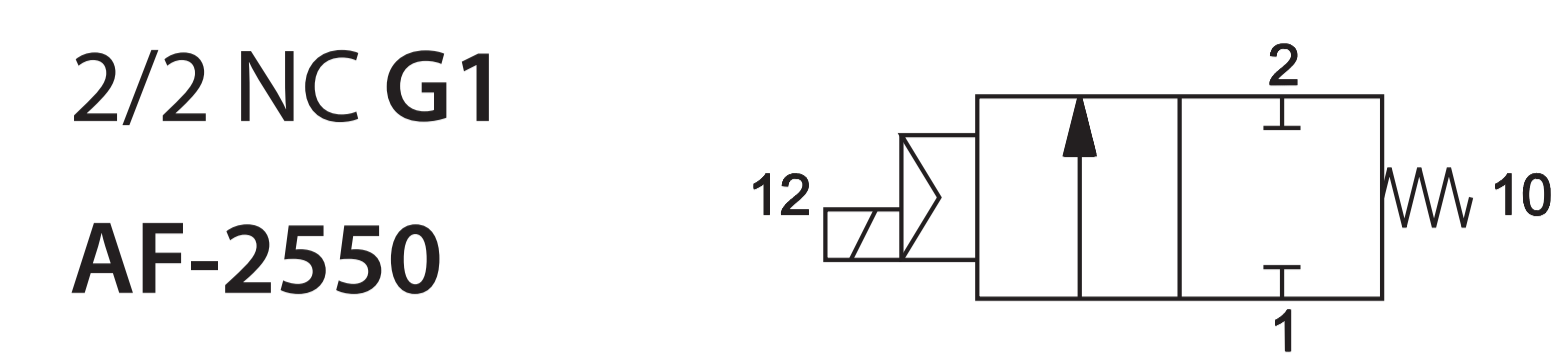
	A	B	C	D	E	F	G	H	I	L	M	N	O	P	Q	R
<b>G1/2</b>	75	47	35	G1/2	78,5	63	21	41	50,5	30	54,5	100	105	6,4	G1/4	37
<b>G3/4</b>	75	47	35	G3/4	78,5	63	21	41	50,5	30	54,5	100	105	6,4	G1/4	37
<b>G1</b>	88,5	55	40	G1	101	76	25,5	51	64	38	62,5	115	120,5	8,4	G1/4	45

**G1 1/2**

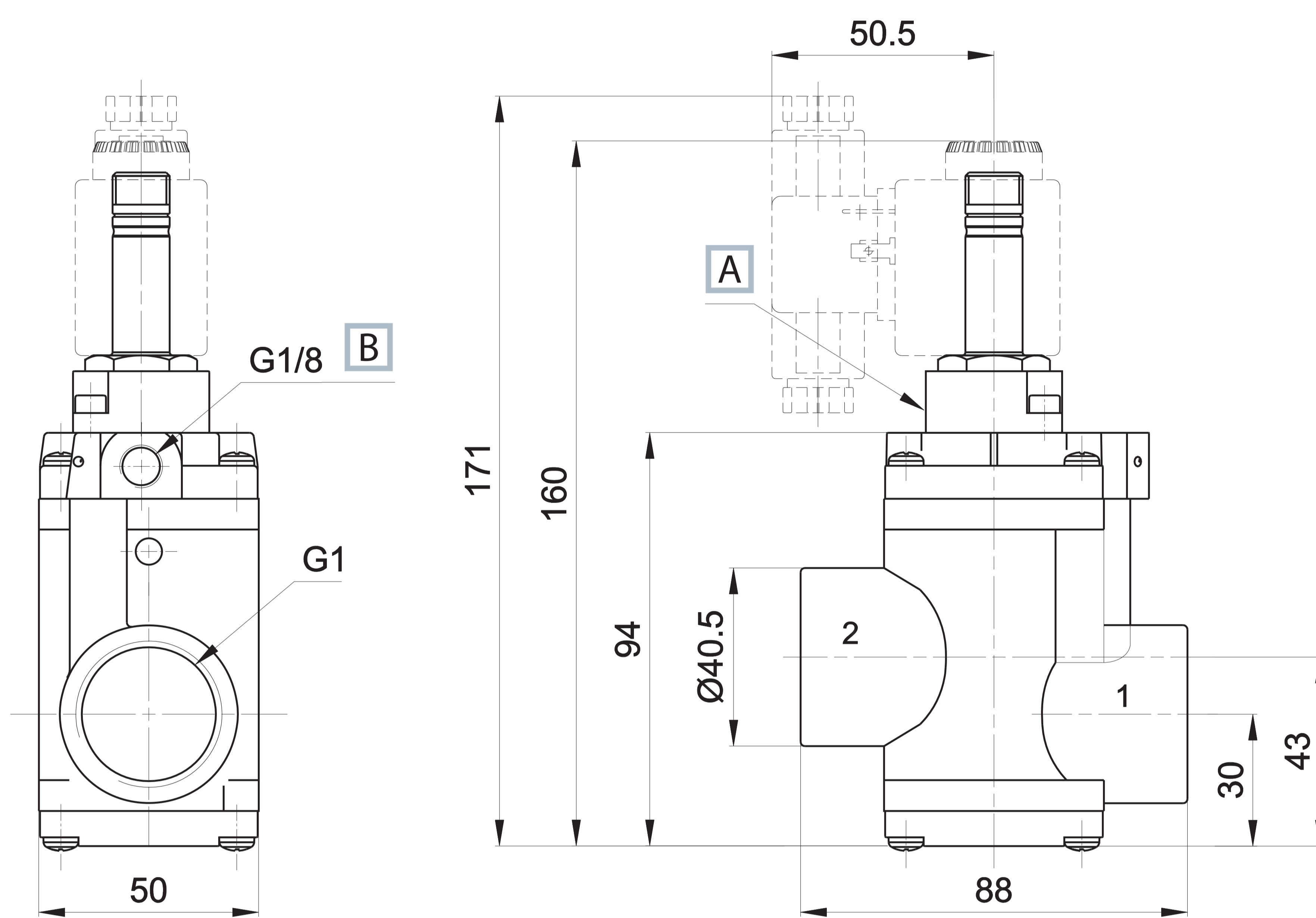


1 = Supply port  
 2 = Use  
 3 = Exhaust

G1 - 2/2 Electrovalve for blowing



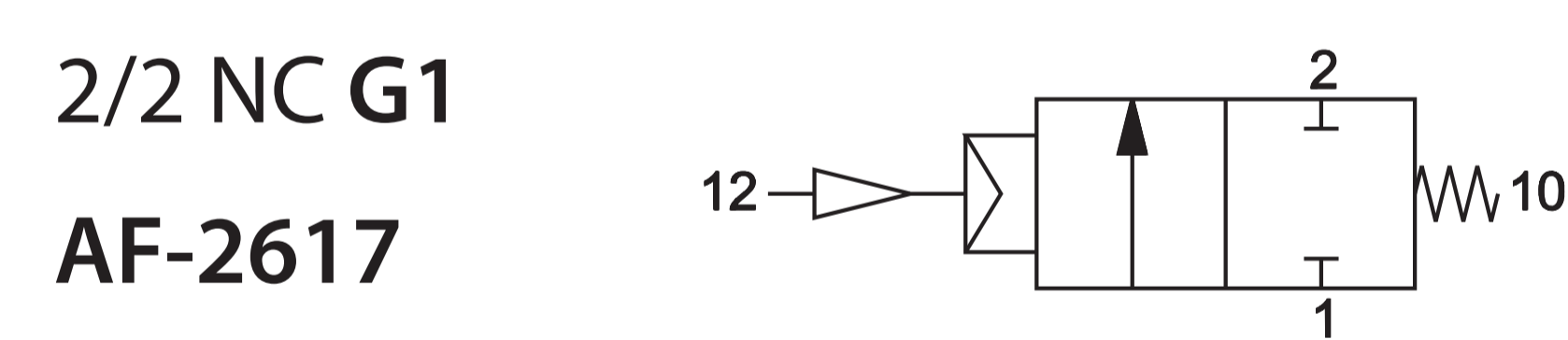
Connect.	Control	Return	Flow rate (NI/min)	Ø mm	Times (ms)		Pressure bar		Weight Kg	Part no.			
					En.	De-en.	min.	max			supply	control	
2/2 NC	G1	electric amplified	pneumomechanical spring	16000	25	23	55	2	10	-	-	1,06	<b>AF-2550</b>
	G1	electric amplified	pneumomechanical spring	16000	25	23	55	2	10	-	-	1,06	<b>AF-2551</b>
	G1	electric amplified	pneumomechanical spring	16000	25	23	35	-	-	6	4	1,06	<b>AF-2552</b>



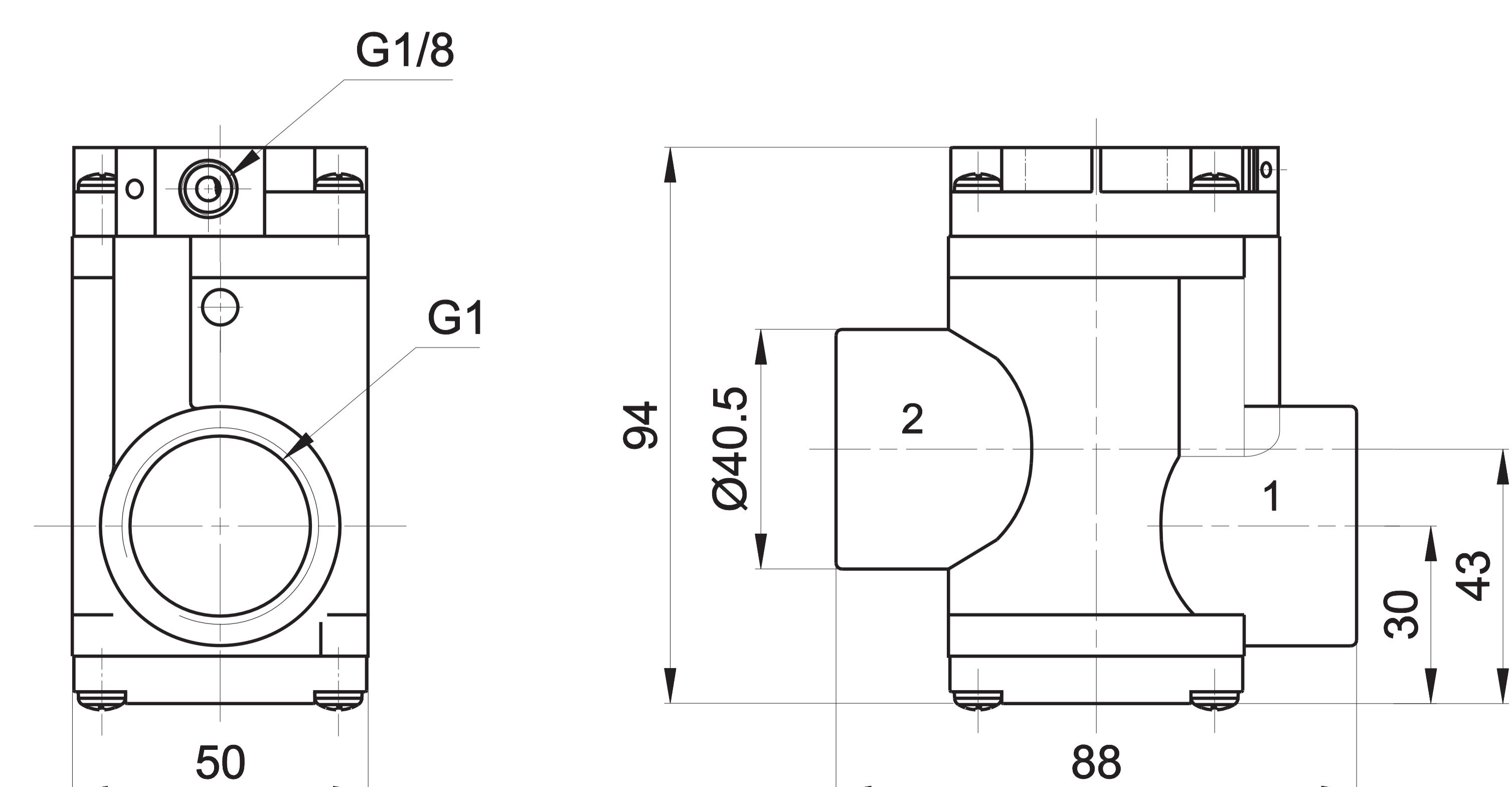
1 = Supply port  
2 = Use

**A** Manual override **AF-2551**  
**B** External servoassistance of the pilot **AF-2552**

G1 - 2/2 Servovalve for blowing



Connect.	Control	Return	Flow rate	Ø mm	Times (ms)		Pressure bar		Weight Kg	Part no.	
					En.	De-en.	min.	max			
2/2 NC	G1	pneumatic amplified	pneumomechanical spring	16000	25	12	25	6	4	1	<b>AF-2617</b>



1 = Supply port  
2 = Use

Electrovalves are supplied without coil, connector and locking ring