

CHARACTERISTICS

Ambient temperature	-20 ÷ +80 °C
Fluid	filtered air, with or without lubrication
Working pressure	4,5÷10 bar
Body	die-cast aluminium
Seals	nitrile rubber
Internal parts	brass/aluminium

UNIVER Locking Units for rodless cylinders perform the function of keeping the carriage in any intended point of its stroke and allow high locking accuracy. They can be mounted on both sides of the carriage and the mechanical braking force can be further increased by means of an additional pneumatic override.



CODIFICATION KEY

L	6	-	S	5	0	3	2
				1		2	

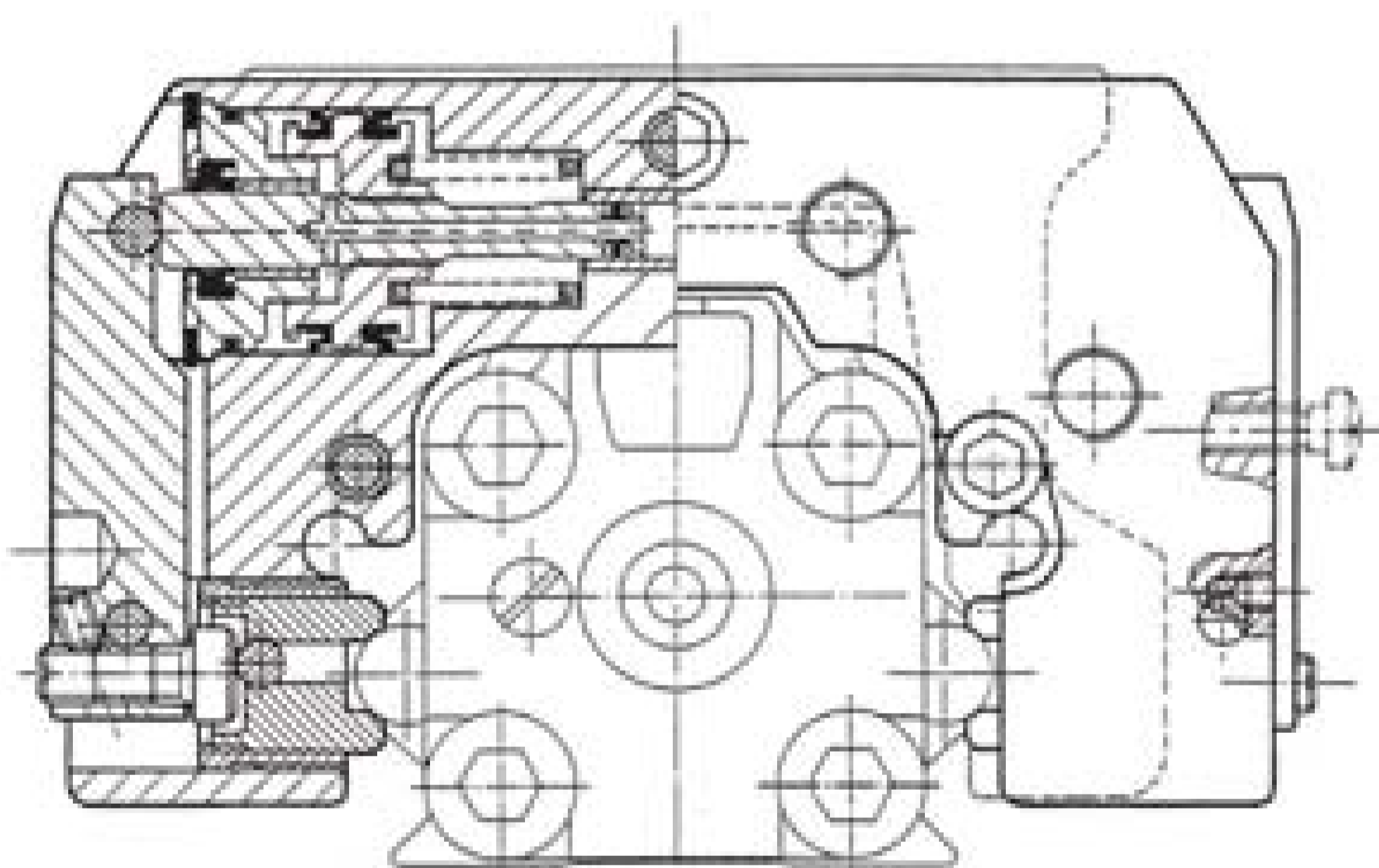
1 Series

L6-S5 = Locking units for rodless cylinder S5 series
L6-V1 = Locking units for rodless cylinder VL1 series

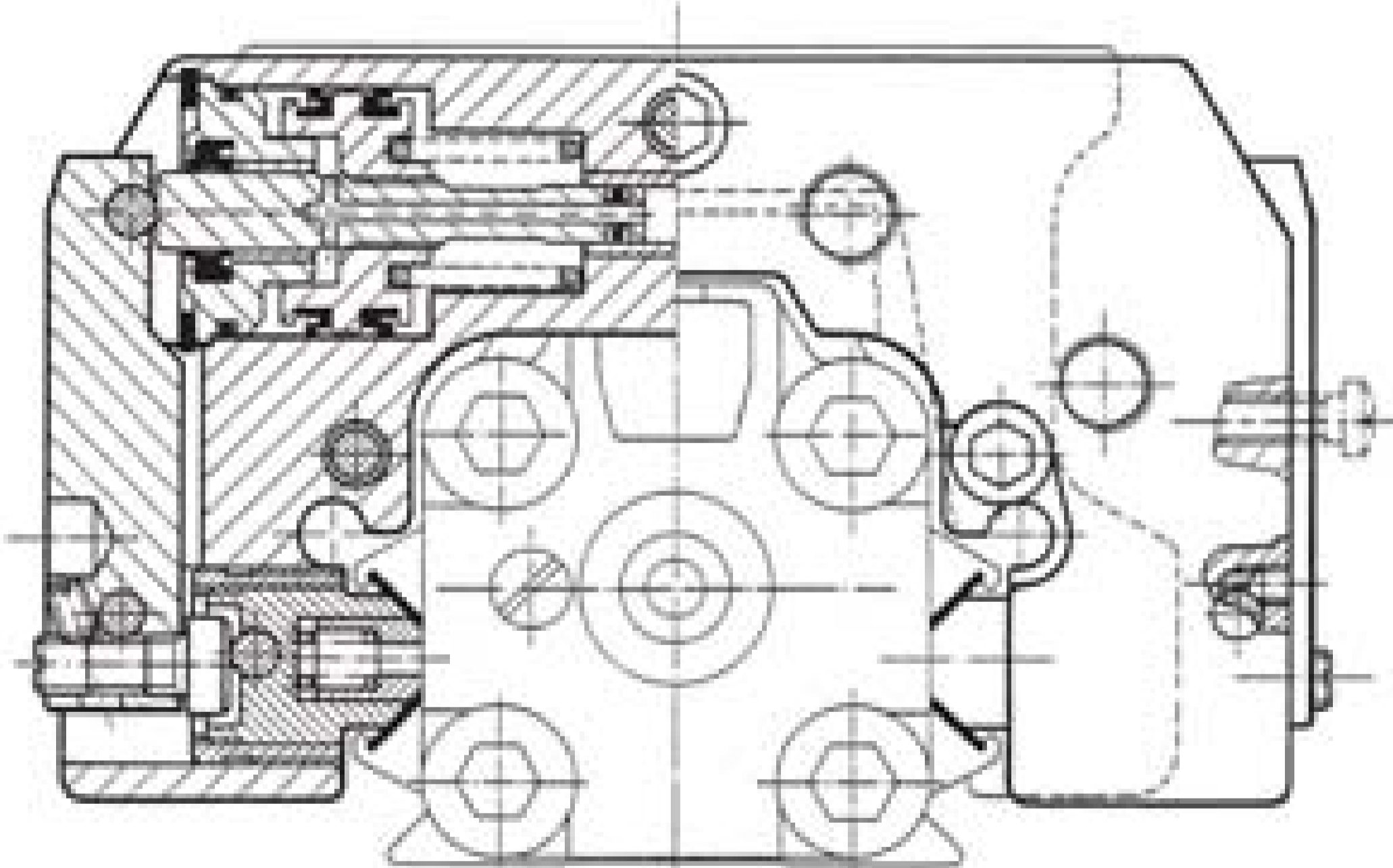
2 Cylinder bore (mm)

025 = Ø25
032 = Ø32
040 = Ø40
050 = Ø50

■ S5 series with locking unit



■ VL1 series with locking unit



- Min. release pressure: 4,5 bar
- Able to keep the carriage in position in both directions
- Easy to be mounted on both sides of the carriage
- Permanent manual release by means of 2 screws M5
- Locking performed by mechanical springs in absence of air
- Preset for additional pneumatic override to increase locking force