

CHARACTERISTICS

Ambient temperature	-20 ÷ 80 °C
Fluid	filtered air, with or without lubrication
Working pressure	2 ÷ 10 bar
Barrel	extruded anodized aluminium
Guide bush for piston rod	special steel
Shafts	chromium-plated steel
Shaft scraper seals	polyurethane
Flange	steel



Slide Units for M, KE/K, KD series cylinders

J1



CODIFICATION KEY

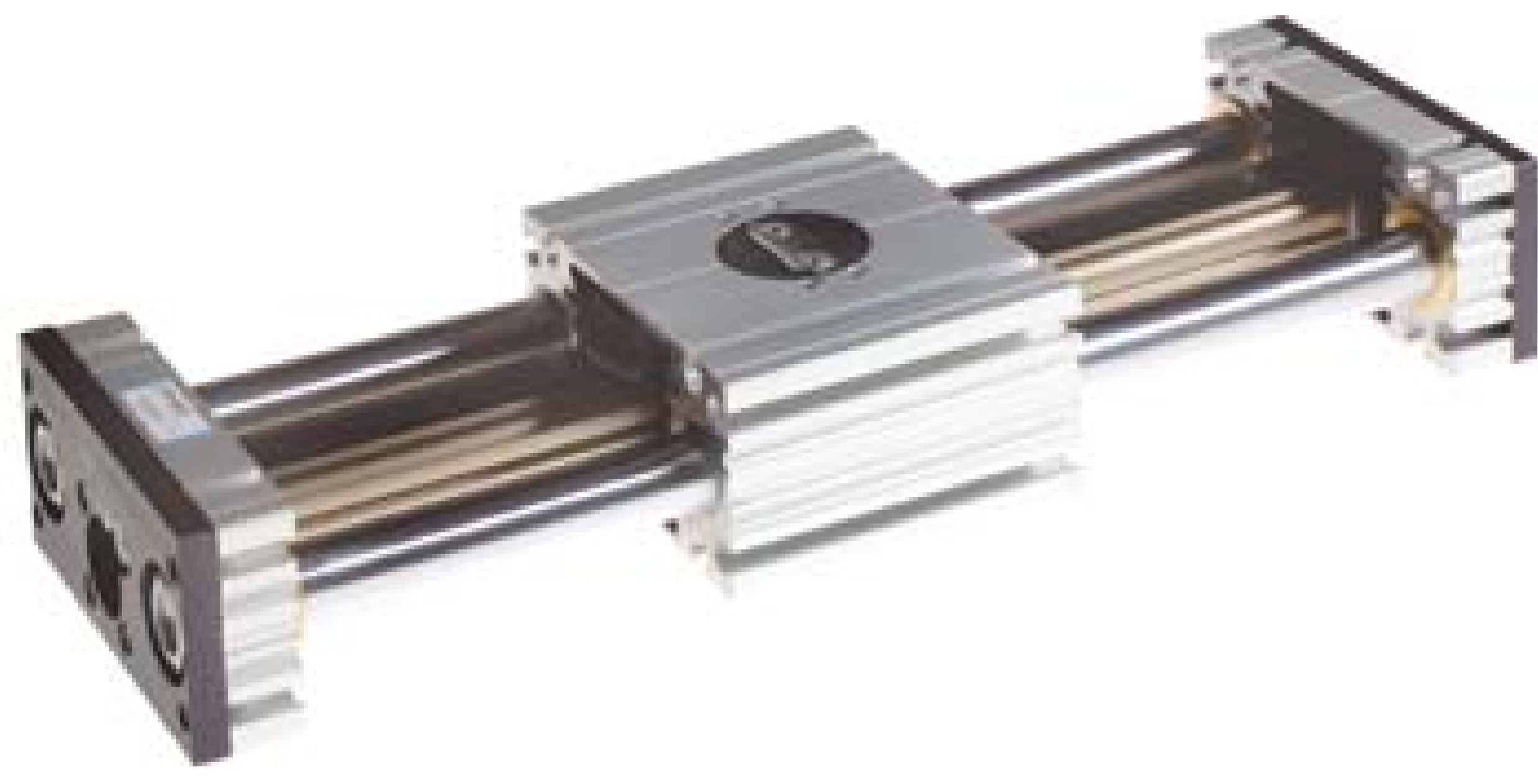
J	1	0	A	5	5	0	0	5	0	A
1	2	3	4	5	6		7			

1 Series	2 Type	3 Accessories	
J = Slide Unit	10 = Protruding shafts and short housing (recommended for strokes up to 50 mm) 11 = Protruding shafts and medium housing 12 = Protruding shafts and long housing 14 = Fully protected cylinder 16 = Central mounting (semi-external cylinder) 17 = Central mounting (fully protected cylinder) 18 = Medium moving housing (external cylinder) 19 = Long moving housing (external cylinder)	A = Shaft scrapers standard supplied	
4 Slide unit size	5 Cylinder bore (mm)	6 Cylinder stroke (mm)	7 Cylinder option
0 = 16 for Ø16 cylinders 2 = 25 for Ø25 cylinders 3 = 32 for Ø32 cylinders 4 = 40 for Ø40 cylinders 5 = 50 for Ø50 cylinders 6 = 63 for Ø63 cylinders 7 = 80 for Ø80 cylinders 8 = 100 for Ø100 cylinders	0 = Ø16 2 = Ø25 3 = Ø32 4 = Ø40 5 = Ø50 6 = Ø63 7 = Ø80 8 = Ø100	M 0025 - 0030 - 0040 - 0050 - 0075 0100 - 0125 - 0150 - 0160 - 0175 0200 - 0250 - 0300 - 0400 - 0500 KD - KE/K 0025 - 0050 - 0075 - 0080 - 0100 0125 - 0150 - 0160 - 0175 - 0200 0250 - 0300 - 0320 - 0400 - 0450 0500 - 0600 - 0700 - 0800 - 0900 1000	A = M150 series Ø16÷25 microcylinders K200 series Ø32÷100 cylinders B = M250 series Ø16÷25 microcylinders with locking unit K200 series Ø32÷100 cylinders with locking unit (only for J12, J14, J16, J17) C = KE200 series Ø 32÷100 cylinders D = KE200 series Ø 32÷100 cylinders with locking unit (only for J12, J14, J16, J17) E = KD200 series Ø32÷100 cylinders (except for J14 and J17) F = KD200 series Ø32÷100 cylinders with locking unit (only for J12 and J16)

Slide units are supplied with integrated cylinder

Slide Units for S1 series rodless cylinders

J3



CODIFICATION KEY

J	3	0	A	5	3	0	1	0	0	A
1	2	3	4	5	6			7		

1 Series J = Slide Unit	2 Type 30 = Fully protected cylinder (2 bearings - standard carriage) 31 = Fully protected cylinder (2 bearings - long carriage)	3 Accessories A = Shaft scrapers standard supplied
-----------------------------------	---	--

4 Slide unit size 4 = 40 for Ø25 cylinders 5 = 50 for Ø32 cylinders 6 = 63 for Ø40 cylinders 7 = 80 for Ø50 cylinders	5 Cylinder bore (mm) 2 = Ø25 3 = Ø32 4 = Ø40 5 = Ø50	6 Slide unit stroke (mm) Up to 0800	7 Supply port option A = Supply ports on both end-caps B = Supply ports on the right end-cap only
--	---	---	--

Slide Units for RS series STRONG compact cylinders

J64RS



CODIFICATION KEY

J	6	4	R	S	3	3	0	0	5	0	B
1	2	3	4	5	6			7			

1 Series J = Slide Unit - Shaft scrapers standard supplied	2 Slide unit type 64 = Fully protected cylinder (stroke longer than 50 mm) 65 = Fully protected cylinder, through opening 66 = Fully protected cylinder, through opening, two plates 67 = Fully protected cylinder, two plates (stroke longer than 50 mm)	3 Cylinder type RS = STRONG cylinder (RS22J... series) with long piston and tube with sensor grooves on the same side as supply ports to allow mounting of magnetic sensors
--	--	---

4 Slide unit size 3 = 32 for Ø32 cylinders 4 = 40 for Ø40 cylinders 5 = 50 for Ø50 cylinders 6 = 63 for Ø63 cylinders	5 Cylinder bore (mm) 3 = Ø32 4 = Ø40 5 = Ø50 6 = Ø63	6 Slide unit stroke (mm) 0015 ÷ 0800	7 Cylinder option A = Cylinder with long piston B = Cylinder with long piston and locking unit
--	---	--	---

Slide units are supplied with integrated cylinder

Slide Units for RT2 series telescopic cylinders

■ J64RT2



CODIFICATION KEY

J	6	4	R	T	2	4	4	0	8	0	0	A
1	2	3	4	5	6	7						

1 Series	2 Slide unit type	3 Cylinder type
J = Slide Unit - Shaft scrapers standard supplied	64 = Fully protected telescopic cylinder	RT2 = 2 stage telescopic cylinders

4 Slide unit size	5 Cylinder bore (mm)	6 Slide unit stroke (mm)	7 Cylinder option
3 = 32 for Ø32 cylinders 4 = 40 for Ø40 cylinders 5 = 50 for Ø50 cylinders 6 = 63 for Ø63 cylinders	3 = Ø32 4 = Ø40 5 = Ø50 6 = Ø63	Standard stroke 0120 - 0160 - 0180 - 0200 - 0300 - 0400 - 0500 0600 - 0700 - 0800 - 0900 - 1000 - 1100 - 1200 Min - Max stroke 0160 ÷ 0400 (Ø32) 0160 ÷ 0600 (Ø40) 0120 ÷ 0900 (Ø50) 0120 ÷ 1200 (Ø63)	A = 2 stage telescopic cylinders

Slide Units for RP series compact cylinders

■ J65



CODIFICATION KEY

J	6	5	R	P	2	2	0	0	5	0	A
1	2	3	4	5	6	7					

1 Series	2 Slide unit type	3 Cylinder type
J = Slide Unit - Shaft scrapers standard supplied	65 = Fully protected cylinder, through opening	RP = UNITOP Ø25 mm compact cylinder

4 Slide unit size	5 Cylinder bore (mm)	6 Slide unit stroke (mm)	7 Cylinder option
2 = 25 for Ø25 cylinders	2 = Ø25	0050 ÷ 0200	A = Cylinder with long piston

Slide units are supplied with integrated cylinder