

### CHARACTERISTICS

|                           |   |
|---------------------------|---|
| Ambient temperature       | -20 ÷ 80 °C                               |
| Fluid                     | filtered air, with or without lubrication |
| Working pressure          | 2 ÷ 10 bar                                |
| Barrel                    | extruded anodized aluminium               |
| Guide bush for piston rod | special steel                             |
| Shafts                    | chromium-plated steel                     |
| Shaft scraper seals       | polyurethane                              |
| Flange                    | steel                                     |



### Slide Units for M, KE/K, KD series cylinders

#### J1



### CODIFICATION KEY

|   |   |   |   |   |   |   |   |   |   |   |
|---|---|---|---|---|---|---|---|---|---|---|
| J | 1 | 0 | A | 5 | 5 | 0 | 0 | 5 | 0 | A |
| 1 | 2 | 3 | 4 | 5 | 6 |   | 7 |   |   |   |

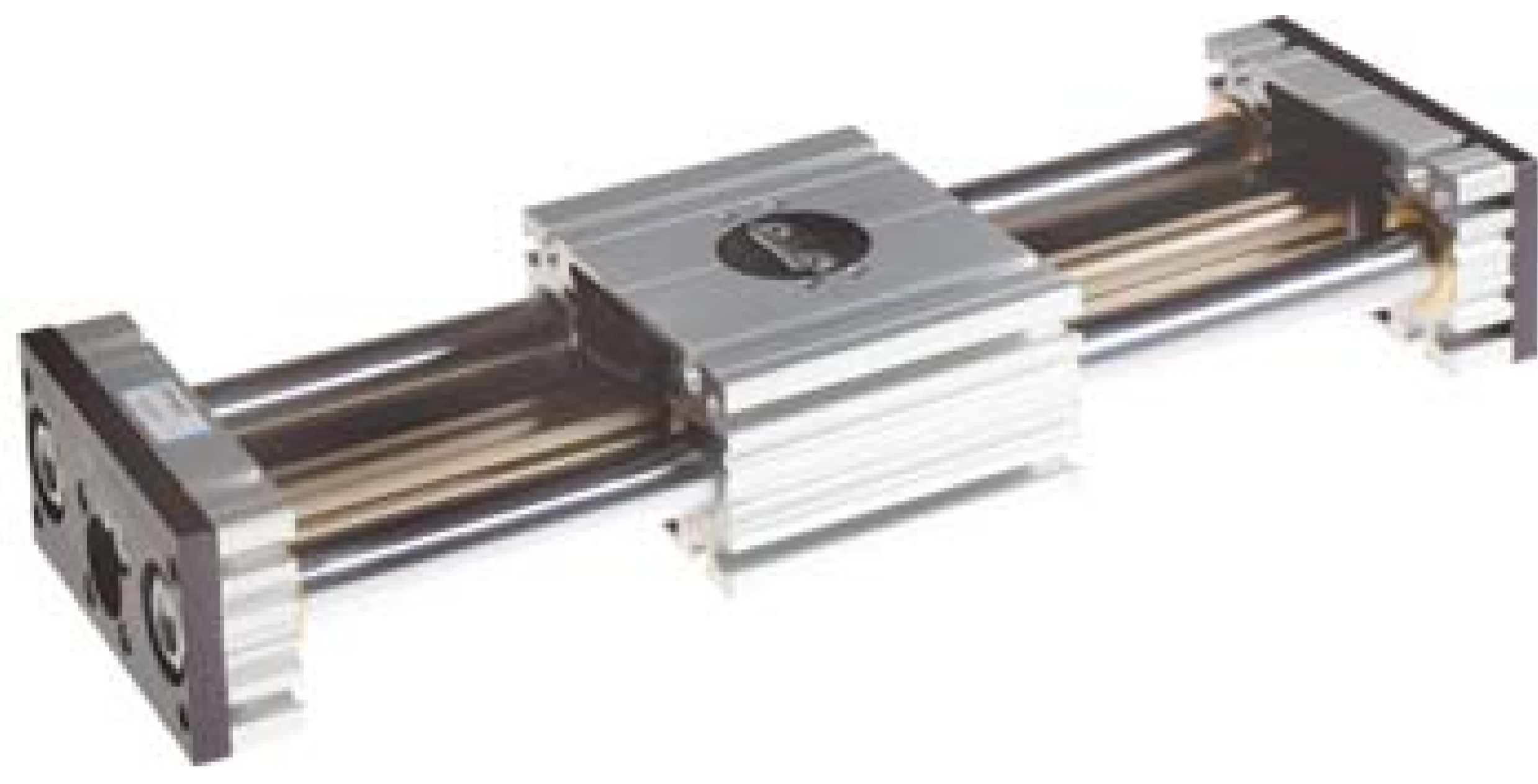
| 1 Series   | 2 Type  | 3 Accessories  |  |
|--|---|--|--|
| J = Slide Unit   | <b>10</b> = Protruding shafts and short housing (recommended for strokes up to 50 mm)<br><b>11</b> = Protruding shafts and medium housing<br><b>12</b> = Protruding shafts and long housing<br><b>14</b> = Fully protected cylinder<br><b>16</b> = Central mounting (semi-external cylinder)<br><b>17</b> = Central mounting (fully protected cylinder)<br><b>18</b> = Medium moving housing (external cylinder)<br><b>19</b> = Long moving housing (external cylinder) | A = Shaft scrapers standard supplied   |  |
| 4 Slide unit size  | 5 Cylinder bore (mm)  | 6 Cylinder stroke (mm)   | 7 Cylinder option  |
| <b>0</b> = 16 for Ø16 cylinders<br><b>2</b> = 25 for Ø25 cylinders<br><b>3</b> = 32 for Ø32 cylinders<br><b>4</b> = 40 for Ø40 cylinders<br><b>5</b> = 50 for Ø50 cylinders<br><b>6</b> = 63 for Ø63 cylinders<br><b>7</b> = 80 for Ø80 cylinders<br><b>8</b> = 100 for Ø100 cylinders | <b>0</b> = Ø16<br><b>2</b> = Ø25<br><b>3</b> = Ø32<br><b>4</b> = Ø40<br><b>5</b> = Ø50<br><b>6</b> = Ø63<br><b>7</b> = Ø80<br><b>8</b> = Ø100   | <b>M</b><br><b>0025 - 0030 - 0040 - 0050 - 0075</b><br><b>0100 - 0125 - 0150 - 0160 - 0175</b><br><b>0200 - 0250 - 0300 - 0400 - 0500</b><br><br><b>KD - KE/K</b><br><b>0025 - 0050 - 0075 - 0080 - 0100</b><br><b>0125 - 0150 - 0160 - 0175 - 0200</b><br><b>0250 - 0300 - 0320 - 0400 - 0450</b><br><b>0500 - 0600 - 0700 - 0800 - 0900</b><br><b>1000</b> | <b>A</b> = M150 series Ø16÷25 microcylinders<br>K200 series Ø32÷100 cylinders<br><b>B</b> = M250 series Ø16÷25 microcylinders with locking unit<br>K200 series Ø32÷100 cylinders with locking unit (only for J12, J14, J16, J17)<br><b>C</b> = KE200 series Ø 32÷100 cylinders<br><b>D</b> = KE200 series Ø 32÷100 cylinders with locking unit (only for J12, J14, J16, J17)<br><b>E</b> = KD200 series Ø32÷100 cylinders (except for J14 and J17)<br><b>F</b> = KD200 series Ø32÷100 cylinders with locking unit (only for J12 and J16) |

Slide units are supplied with integrated cylinder



## Slide Units for S1 series rodless cylinders

### J3



### CODIFICATION KEY

|   |   |   |   |   |   |   |   |   |   |   |
|---|---|---|---|---|---|---|---|---|---|---|
| J | 3 | 0 | A | 5 | 3 | 0 | 1 | 0 | 0 | A |
| 1 | 2 | 3 | 4 | 5 | 6 |   |   | 7 |   |   |

|                 |  |                                      |
|-----------------|--|--------------------------------------|
| <b>1 Series</b> | <b>2 Type</b>  | <b>3 Accessories</b>                 |
| J = Slide Unit  | 30 = Fully protected cylinder (2 bearings - standard carriage)<br>31 = Fully protected cylinder (2 bearings - long carriage) | A = Shaft scrapers standard supplied |

|  |  |                                 |   |
|--|--|---------------------------------|---|
| <b>4 Slide unit size</b>   | <b>5 Cylinder bore (mm)</b>              | <b>6 Slide unit stroke (mm)</b> | <b>7 Supply port option</b>   |
| 4 = 40 for Ø25 cylinders<br>5 = 50 for Ø32 cylinders<br>6 = 63 for Ø40 cylinders<br>7 = 80 for Ø50 cylinders | 2 = Ø25<br>3 = Ø32<br>4 = Ø40<br>5 = Ø50 | Up to 0800                      | A = Supply ports on both end-caps<br>B = Supply ports on the right end-cap only |

## Slide Units for RS series STRONG compact cylinders

### J64RS



### CODIFICATION KEY

|   |   |   |   |   |   |   |   |   |   |   |   |
|---|---|---|---|---|---|---|---|---|---|---|---|
| J | 6 | 4 | R | S | 3 | 3 | 0 | 0 | 5 | 0 | B |
| 1 | 2 | 3 | 4 | 5 | 6 |   |   | 7 |   |   |   |

|   |  |   |
|---|--|---|
| <b>1 Series</b>                                   | <b>2 Slide unit type</b>   | <b>3 Cylinder type</b>  |
| J = Slide Unit - Shaft scrapers standard supplied | 64 = Fully protected cylinder (stroke longer than 50 mm)<br>65 = Fully protected cylinder, through opening<br>66 = Fully protected cylinder, through opening, two plates<br>67 = Fully protected cylinder, two plates (stroke longer than 50 mm) | RS = STRONG cylinder (RS22J... series) with long piston and tube with sensor grooves on the same side as supply ports to allow mounting of magnetic sensors |

|  |  |                                 |   |
|--|--|---------------------------------|---|
| <b>4 Slide unit size</b>   | <b>5 Cylinder bore (mm)</b>              | <b>6 Slide unit stroke (mm)</b> | <b>7 Cylinder option</b>  |
| 3 = 32 for Ø32 cylinders<br>4 = 40 for Ø40 cylinders<br>5 = 50 for Ø50 cylinders<br>6 = 63 for Ø63 cylinders | 3 = Ø32<br>4 = Ø40<br>5 = Ø50<br>6 = Ø63 | 0015 ÷ 0800                     | A = Cylinder with long piston<br>B = Cylinder with long piston and locking unit |

Slide units are supplied with integrated cylinder



## Slide Units for RT2 series telescopic cylinders

### ■ J64RT2



### CODIFICATION KEY

|   |   |   |   |   |   |   |   |   |   |   |   |   |
|---|---|---|---|---|---|---|---|---|---|---|---|---|
| J | 6 | 4 | R | T | 2 | 4 | 4 | 0 | 8 | 0 | 0 | A |
| 1 | 2 | 3 | 4 | 5 | 6 | 7 |   |   |   |   |   |   |

|  |  |  |
|--|--|--|
| <b>1 Series</b><br>J = Slide Unit - Shaft scrapers standard supplied | <b>2 Slide unit type</b><br>64 = Fully protected telescopic cylinder | <b>3 Cylinder type</b><br>RT2 = 2 stage telescopic cylinders |
|--|--|--|

|  |   |  |  |
|--|---|--|--|
| <b>4 Slide unit size</b><br>3 = 32 for Ø32 cylinders<br>4 = 40 for Ø40 cylinders<br>5 = 50 for Ø50 cylinders<br>6 = 63 for Ø63 cylinders | <b>5 Cylinder bore (mm)</b><br>3 = Ø32<br>4 = Ø40<br>5 = Ø50<br>6 = Ø63 | <b>6 Slide unit stroke (mm)</b><br>Standard stroke<br>0120 - 0160 - 0180 - 0200 - 0300 - 0400 - 0500<br>0600 - 0700 - 0800 - 0900 - 1000 - 1100 - 1200<br><br>Min - Max stroke<br>0160 ÷ 0400 (Ø32)<br>0160 ÷ 0600 (Ø40)<br>0120 ÷ 0900 (Ø50)<br>0120 ÷ 1200 (Ø63) | <b>7 Cylinder option</b><br>A = 2 stage telescopic cylinders |
|--|---|--|--|

## Slide Units for RP series compact cylinders

### ■ J65



### CODIFICATION KEY

|   |   |   |   |   |   |   |   |   |   |   |   |
|---|---|---|---|---|---|---|---|---|---|---|---|
| J | 6 | 5 | R | P | 2 | 2 | 0 | 0 | 5 | 0 | A |
| 1 | 2 | 3 | 4 | 5 | 6 | 7 |   |   |   |   |   |

|  |  |   |
|--|--|---|
| <b>1 Series</b><br>J = Slide Unit - Shaft scrapers standard supplied | <b>2 Slide unit type</b><br>65 = Fully protected cylinder, through opening | <b>3 Cylinder type</b><br>RP = UNITOP Ø25 mm compact cylinder |
|--|--|---|

|  |  |  |   |
|--|--|--|---|
| <b>4 Slide unit size</b><br>2 = 25 for Ø25 cylinders | <b>5 Cylinder bore (mm)</b><br>2 = Ø25 | <b>6 Slide unit stroke (mm)</b><br>0050 ÷ 0200 | <b>7 Cylinder option</b><br>A = Cylinder with long piston |
|--|--|--|---|

Slide units are supplied with integrated cylinder