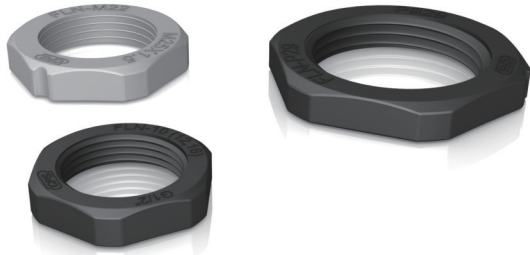


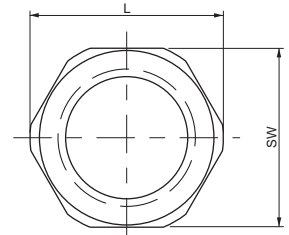
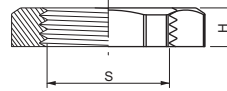
FLN / SLN



FLN •Material: Polyamide Black Gray



SLN •Material: Brass+Nickel Plated Steel



G(PF) M Pg

PF Thread (JIS B0202)

(dimensions in mm)

Order No.						
Black	Gray	Thread	S	H	L	SW
FLN-G07B	FLN-G07G	G1/4"	13	6	20.7	19
FLN-G10B	FLN-G10G	G1/2"	20.9	6	29.5	27.3
FLN-G12B	FLN-G12G	G1/2"	20.9	6	29.5	27.3
FLN-G16B	FLN-G16G	G1/2"	20.9	6	29.5	27.3
FLN-G22B	FLN-G22G	G3/4"	26.4	6.8	38.4	36
FLN-G28B	FLN-G28G	G1"	33.2	6.8	47.8	44
FLN-G36B	FLN-G36G	G1 1/4"	41.9	8	52.3	49
FLN-G42B	FLN-G42G	G1 1/2"	47.8	8	72.3	65
FLN-G48B	FLN-G48G	G2"	59.6	8	76.5	70

PF Thread

Order No.
SLN-G07
SLN-G10
SLN-G12
SLN-G16
SLN-G22
SLN-G28
SLN-G36
SLN-G42
SLN-G48

Metric Thread (EN 60423)

FLN-M10B	FLN-M10G	M12 X 1.5	12	6	18.5	17
FLN-M12B	FLN-M12G	M16 X 1.5	16	6	23.9	22
FLN-M16B	FLN-M16G	M20 X 1.5	20	6	27.8	26
FLN-M22B	FLN-M22G	M25 X 1.5	25	6.8	35.3	33
FLN-M28B	FLN-M28G	M32 X 1.5	32	6.8	43.4	40
FLN-M36B	FLN-M36G	M40 X 1.5	40	8	55.8	50
FLN-M48B	FLN-M48G	M50 X 1.5	50	8	67.1	60

Metric Thread

SLN-M10
SLN-M12
SLN-M16
SLN-M22
SLN-M28
SLN-M36
SLN-M48

Pg Thread (DIN 40430)

FLN-P07B	FLN-P07G	Pg07	12.5	4	21.1	19
FLN-P09B	FLN-P09G	Pg09	15.2	4	23.9	22
FLN-P11B	FLN-P11G	Pg11	18.6	6	25.8	24
FLN-P13B	FLN-P13G	Pg13.5	20.4	6	28.7	27
FLN-P16B	FLN-P16G	Pg16	22.5	6	32.1	30
FLN-P21B	FLN-P21G	Pg21	28.3	6.8	38.5	36
FLN-P29B	FLN-P29G	Pg29	37	6.8	49.7	46
FLN-P36B	FLN-P36G	Pg36	47	8	66.5	60
FLN-P48B	FLN-P48G	Pg48	59.3	8	78.1	70.2

Pg Thread

SLN-P07
SLN-P09
SLN-P11
SLN-P13
SLN-P16
SLN-P21
SLN-P29
SLN-P36
SLN-P48