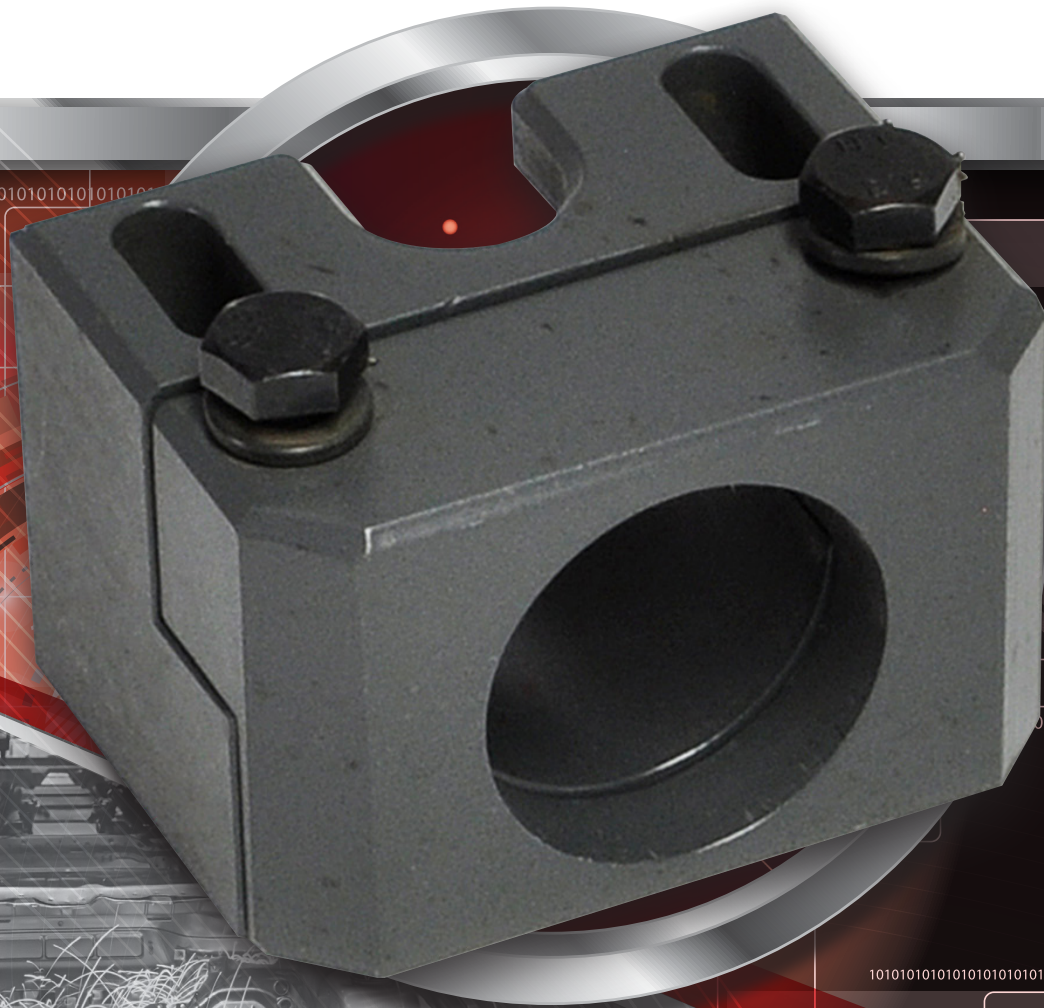


CERAMIC COATED SENSOR  
MOUNTING BRACKETS

**HTM**<sup>TM</sup>  
SENSORS



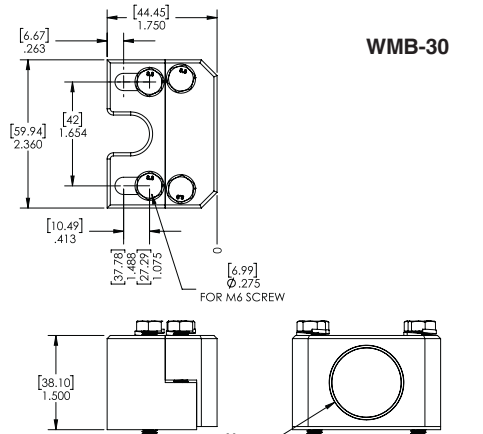
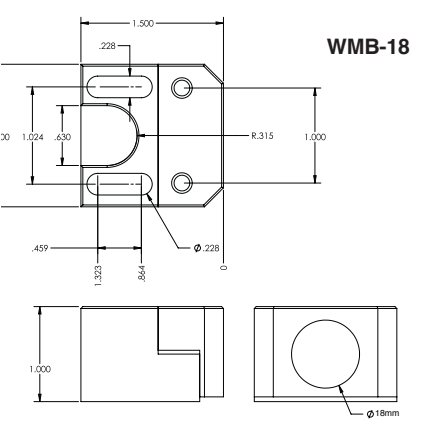
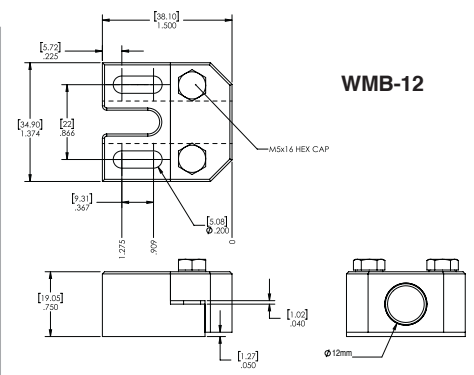
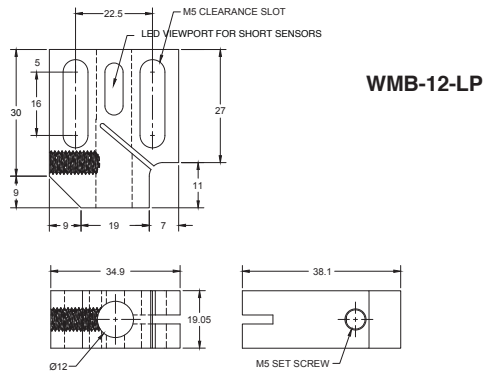
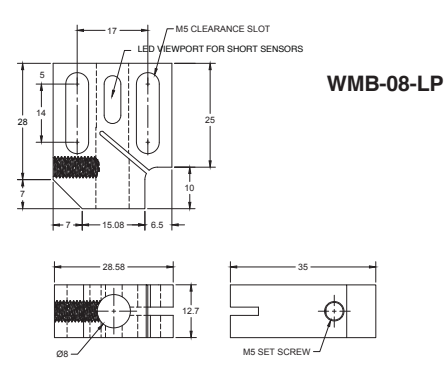
- DIRECT RETROFIT FOR EXISTING MOUNTS
- FACETED FACE FOR CLOSER PART PLACEMENT
- SUPERIOR CLAMPING FORCE
- ABSORBS IMPACTS FOR ENHANCED SENSOR PROTECTION
- GREATER RESISTANCE TO SPATTER ADHESION
- CUTAWAY CHANNEL TO VIEW SENSOR LED



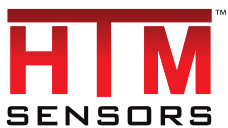
# CERAMIC COATED SENSOR MOUNTING BRACKETS SPECIFICATIONS



DIMENSIONS (mm)	L=35 / W=28.6 / H=12.7	L=38.1 / W=34.9 / H=19.05	L=38.1 / W=34.9 / H=19.05	L=38.1 / W=38.1 / H=25.4	L=44.45 / W=59.94 / H=38.1
HOUSING MATERIAL	Zirconium Graphite Coated Steel				
PART NUMBER	WMB-08-LP	WMB-12-LP	WMB-12	WMB-18	WMB-30



REDUCE DOWNTIME WITH ACCESSORIES THAT PROTECT SENSORS, CABLES AND ASSOCIATED COMPONENTS AGAINST THE CHALLENGES OF WELDING ENVIRONMENTS. MOUNTING BRACKETS WITH CERAMIC COATING RESIST ACCUMULATION OF WELD SPATTER AND SO REDUCE THE NEED FOR CLEANING.



In Canada: 3419 Mainway, Burlington, ON L7M 1A9  
 In the USA: 1889 Maryland Ave., Niagara Falls, NY 14304  
 Toll Free: 1-800-644-1756  
 service@htmsensors.com

Proudly Supported by

