

### Type C01

**Horizontally-Mounted:**  
Trimod Besta Compact Switch

**92 x 92mm (square), JIS DN 65A (round)**  
Flange

**Up to 248°F (IP 67) and 302°F (IP 65)**  
Temperature

**Stainless steel**  
Wetted Parts



### ABOUT TYPES C01C05, C329C05 Trimod Besta Compact Switch

Designed for a wide range of liquid applications, the new Compact switch offers the manufacturer's renowned quality in a smaller package at an unbeatable price. It is robust, easily installed, and approved by Lloyd's Register of Shipping.

#### Application Examples:

- Shipbuilding
- Refrigeration
- Chemical Engineering
- Food Industry
- Pulp and Paper
- Drinking Water Supply
- Sewage Treatment

For more information about our complete line of horizontally-mounted liquid level switches, visit our web site at:  
<http://www.granzow.com/liquidlevelcontrols/horizontal/>



Lloyds Register of Shipping / LRS  
Type Approval Certificate No. 05/20052(E4)

### Compact Switch

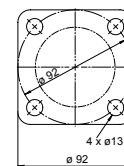
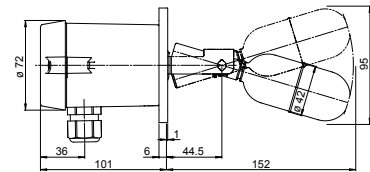
Level switch for horizontal mounting

The «Compact Switch» is robust, easily installed and covers a wide range of applications. High product quality guarantees exceptional life time.

Type C 01C 05	For alarm and limit functions with a square flange (incl. gasket)
Nominal pressure	PN 10
Operating temperature	0 to 150°C
Ambient temperature	0 to 70°C
Density of the liquid	min. 0.7 kg/dm <sup>3</sup>
Operating differential	12 mm, fixed
Wetside material	Stainless steel (CrNiMo)
Flange material	Stainless steel (CrNiMo)
Housing material	Seawater resistant, die cast aluminium
Flange	square 92 x 92 mm, PCD 92 mm
Switch element	Microswitch SPDT with silver contacts
Switch rating	250 VAC, 3 A 30 VDC, 0.5 A
Cable entry	Internal thread M20 x 1.5
Enclosure	IP65
Weight	approx. 0.9 kg

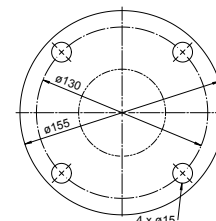
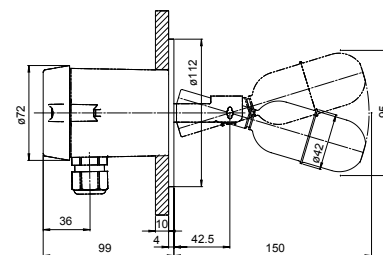
  

Option: Type DC 01C 05	(All other technical data as type C 01C 05)
Operating temperature	0 to 120°C
Enclosure	IP67



Type C 329C 05	For alarm and limit functions with a JIS Flange
Nominal pressure	PN 5K (acc. to JIS B 2220)
Operating temperature	0 to 150°C
Ambient temperature	0 to 70°C
Density of the liquid	min. 0.7 kg/dm <sup>3</sup>
Operating differential	12 mm, fixed
Wetside material	Stainless steel (CrNiMo)
Flange material	
Sealing unit	Stainless steel (CrNiMo)
Slip-on Flange	Carbon steel H II zinc galvanized, passivated
Housing material	Seawater resistant, die cast aluminium
Flange	DN 65A (acc. to JIS B 2220)
Switch element	Microswitch SPDT with silver contacts
Switch rating	250 VAC, 3 A 30 VDC, 0.5 A
Cable entry	Internal thread M20 x 1.5
Enclosure	IP65
Weight	approx. 2.1 kg

Option: Type DC 329C 05	(All other technical data as type C 329C 05)
Operating temperature	0 to 120°C
Enclosure	IP67



>> Various shipping register approvals are in preparation.

### Accessories

#### Counterflanges with and without test actuator

The simplest method of installing any Trimod Besta level switch is to use our standard weld-on counterflanges. These are available in carbon steel and stainless steel versions in two different lengths, with or without a test actuator. The test actuator allows a periodic manual function check of the level switch in operating status. The following functions can be tested; function of the switching element (microswitch) and movement of the float.

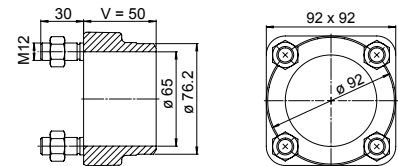


Type	Flange material	Stud material	Test actuator material	O-Ring material
------	-----------------	---------------	------------------------	-----------------

#### Counterflange V = 50 mm

2835	C22.8	5.8		
------	-------	-----	--	--

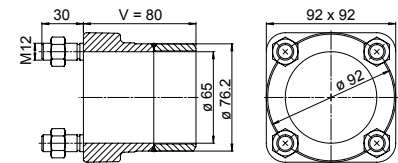
2838	1.4404	A2		
------	--------	----	--	--



#### Counterflange V = 80 mm

2835V80	C22.8	5.8		
---------	-------	-----	--	--

2838V80	1.4404	A2		
---------	--------	----	--	--



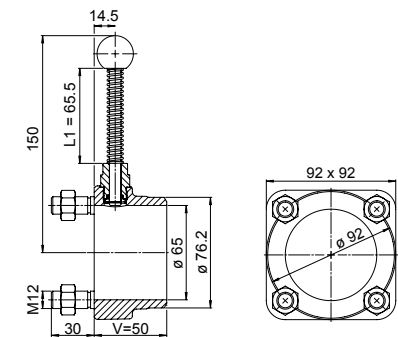
#### Counterflange V = 50 mm with test actuator

2865	C22.8	5.8	1.4305/1.4404	FPM
------	-------	-----	---------------	-----

2866	C22.8	5.8	1.4305/1.4404	EPDM
------	-------	-----	---------------	------

2868	1.4404	A2	1.4305/1.4404	FPM
------	--------	----	---------------	-----

2869	1.4404	A2	1.4305/1.4404	EPDM
------	--------	----	---------------	------



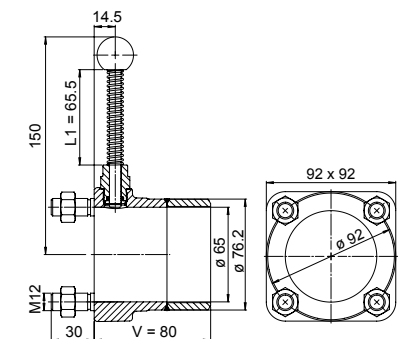
#### Counterflange V = 80 mm with test actuator

2865V80	C22.8	5.8	1.4305/1.4404	FPM
---------	-------	-----	---------------	-----

2866V80	C22.8	5.8	1.4305/1.4404	EPDM
---------	-------	-----	---------------	------

2868V80	1.4404	A2	1.4305/1.4404	FPM
---------	--------	----	---------------	-----

2869V80	1.4404	A2	1.4305/1.4404	EPDM
---------	--------	----	---------------	------



Temperature range:

■ Counterflange	Material C22.8:	-10 to +300°C
	Material 1.4404:	-196 to +400°C
■ Test actuator	with FPM O-Ring:	0 to +150°C
	with EPDM O-Ring:	-30 to +150°C
Operating pressure:		-1 to +25 bar



### Spare parts

Type	Specification	Test actuator	O-Ring
2380	Test actuator	1.4305/1.4404	FPM
2381	Test actuator	1.4305/1.4404	EPDM

