



# MLD Series

Rotary Switch Disconnecter



## Ordering Information

MLD - ① ②

① Rated Current			
<b>020</b>	20A	<b>032</b>	32A
<b>040</b>	40A	<b>063</b>	63A
<b>080</b>	80A	<b>100</b>	100A

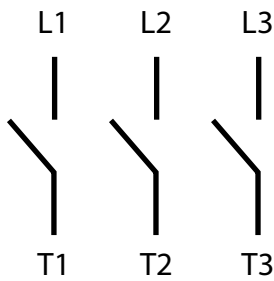
② Mounting Type	PE	Panel Type
	ESE	Extension Shaft

## Specifications

Division		MLD-020	MLD-032	MLD-040	MLD-063	MLD-080	MLD-100
Rated Isolation Voltage (Ui)	V	660	660	660	660	1000	1000
Maximum Switching Current (I th)	A	20	32	40	63	80	100
Rated Current (Ie)							
AC-23A	A	15	22	30	43	57	70
AC-3	A	11	15	22	36	43	57
Rated Voltage (Ue)	V	240 440	240 440	240 440	240 440	240 440	240 440
Contact Capacity							
AC-23A	kW	3.7 5.5	5.5 11	7.5 15	9 22	15 30	22 37
AC-3	kW	2.7 3.7	4 7.5	5.5 11	8 18.5	9 22	15 30
Motor Load	V	240 440	240 440	240 440	240 440	240 440	240 440
	HP	2 3	5 10	7.5 15	10 20	20 40	25 50
Icw/s	A	180	264	360	516	684	840
Wire	mm <sup>2</sup>	1.25 - 5.5	2 - 14	2 - 14	3 - 38	2 - 38	2 - 60
Tightening Torque	N-m	0.8(8.16kgf-cm)		1.2(12.24kgf-cm)		2.5(25.49kgf-cm)	

\* Workable temperature : -25 ~ 70°C (With no icing)

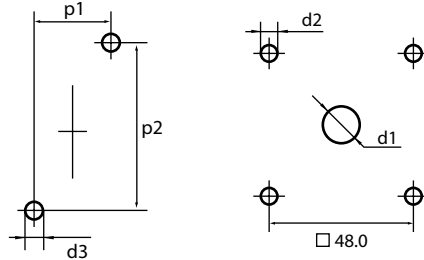
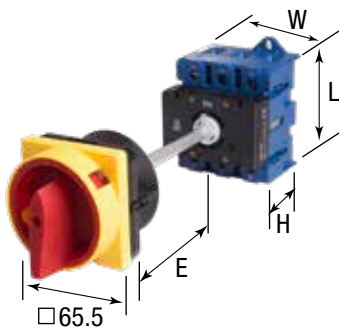
## Contact Diagram



## Dimensions

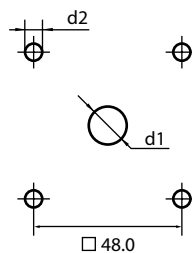
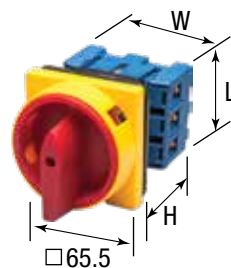
unit: mm

### MLD-ES Series



Model	Switch			Panel				
	H	L	W	d1	d2	d3	p1	p2
MLD-020	55	54	42	20	4.2	4.2	22	60
MLD-032	55	54	42	20	4.2	4.2	22	60
MLD-040	60	64	50	20	4.2	4.2	22	70
MLD-063	60	64	50	20	4.2	4.2	22	70
MLD-080	70	80	70	20	4.2	4.2	25	90
MLD-100	70	80	70	20	5.2	5.2	25	90

### MLD-P Series



Model	Switch			Panel	
	H	L	W	d1	d2
MLD-020	55	54	42	20	4.2
MLD-032	55	54	42	20	4.2
MLD-040	60	64	50	20	4.2
MLD-063	60	64	50	20	4.2
MLD-080	70	80	70	20	4.2
MLD-100	70	80	70	20	5.2