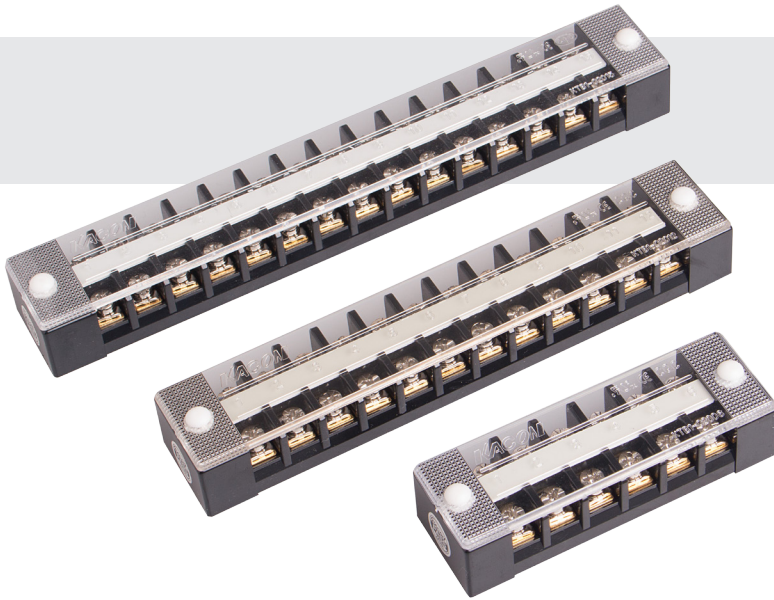


# KTB1 Series

Barrier Terminal Blocks



## Ordering Information

KTB1 - ① ②

### 10 & 30A

① Rated Current	<b>010</b>	10A	<b>030</b>	30A
② Number of Poles	<b>03</b>	3 poles	<b>04</b>	4 poles
	<b>06</b>	6 poles	<b>10</b>	10 poles

### 20A

① Rated Current	<b>020</b>		20A	
② Number of Poles	<b>03</b>	3 poles	<b>04</b>	4 poles
	<b>06</b>	6 poles	<b>10</b>	10 poles
	<b>12</b>	12 poles	<b>15</b>	15 poles
	<b>20</b>	20 poles		

### 60 - 600A

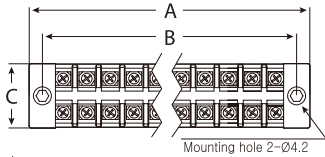
① Rated Current	<b>060</b>	60A	<b>100</b>	100A
	<b>150</b>	150A	<b>200</b>	200A
	<b>300</b>	300A	<b>400</b>	400A
	<b>500</b>	500A	<b>600</b>	600A
② Number of Poles	<b>03</b>	3 poles	<b>04</b>	4 poles

## General Specification

Rated Voltage	Max. 600VAC	
Insulation Resistance	Min. 100MΩ	
Dielectric Strength	2,500VAC/Min.	
Material	Body	Flame retardant polycarbonate resine
	Cover	Acrylic (clear)
	Terminal	1st grade brass
	Name Plate	PVC (Pearl white)

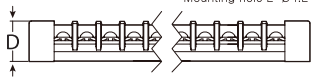
## Dimensions

unit:mm

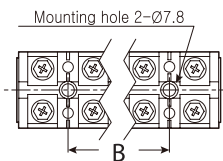


KTB1-010 ~ KTB1-030

Model	A				B				C				D			
	03	04	06	10	03	04	06	10	03	04	06	10	03	04	06	10
KTB1-010	48	57.5	76.5	115	37	46.5	65.5	104	24	24	24	24	17	17	17	17
KTB1-030	67.5	81	108	162	52.5	66	93	147	35	35	35	35	26	26	26	26



Model	A				B				C				D			
	03	04	06	10	03	04	06	10	03	04	06	10	03	04	06	10
KTB1-020	56	68	91	139	44.5	56	79	125	30	30	30	30	19.5	19.5	19.5	19.5
	<b>12</b>	<b>15</b>	<b>20</b>	-	<b>12</b>	<b>15</b>	<b>20</b>	-	<b>12</b>	<b>15</b>	<b>20</b>	-	<b>12</b>	<b>15</b>	<b>20</b>	-
	163	198	254.5	-	147	185.5	242	-	30	30	30	-	19.5	19.5	19.5	-

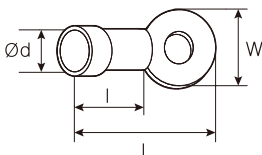


KTB1-060 ~ KTB1-600

Model	A		B		C		D	
	03	04	03	04	03	04	03	04
KTB1-060	85.8	114.5	28.5	57	43	43	31.5	31.5
KTB1-100	102.5	136	34	68	54.5	54.5	36	36
KTB1-150	115	153.5	38	76	66	66	39	39
KTB1-200	132.5	176	43.5	87	72	72	44	44
KTB1-300	165	220	55	110	90	90	51.5	51.5
KTB1-400	165	220	55	110	90	90	51.5	51.5
KTB1-500	206	275	68.5	137	100	100	70	70
KTB1-600	206	275	68.5	137	100	100	70	70

## Connection Terminal Specification

unit:mm



Model	KTB1-010	KTB1-020	KTB1-030	KTB1-060	KTB1-100	KTB1-150	KTB1-200	KTB1-300	KTB1-400	KTB1-500	KTB1-600
Terminal Bolt	M3.0	M4.0		M6.0	M7.0	M8.0		M10.0		M12.0	
W	6.5	8.0	10.2	14.5	19.5	21.5	24.5	35		44.5	
L	20.6	21.5	26.5	35.5	45.6	50.5		55		65.5	
l	10.0		14.5		20.0			26		65.5	
d	Ø3.1	Ø4.1		Ø6.1	Ø8.1	Ø10.1					