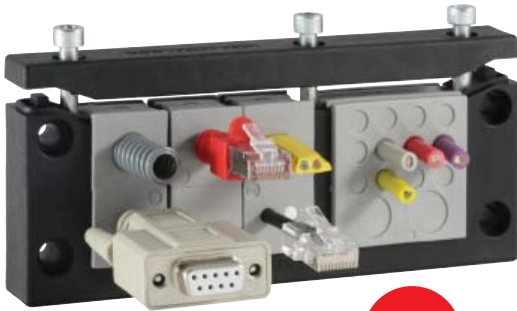


# KEL-U 24

## Cable Entry Frames



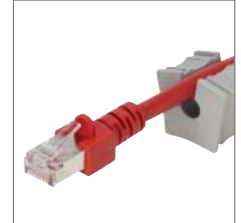
**IP54**



Also available with stainless steel screws (V2A).



Also available with threaded bushings.



Slit KT grommets

### Product Description

Split cable entry system for routing pre-terminated cables providing an IP54 / UL type 12 rating. Routing, sealing and providing strain relief for cable diameters from 1 to 35 mm. The new cable entry system is easy to install. Cable grommets are placed into compartments in the frame and are securely fixed to the frame during assembly. The KEL-U 24 frame matches exactly the cut-out dimensions for 24-pin standard industrial connectors. Either a cut-out of 36 mm or 46 mm in height can be chosen depending on the cables being routed. A flat rubber gasket is included in the shipment.

### Advantages & Benefits

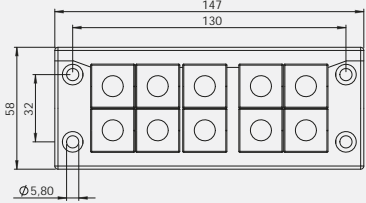
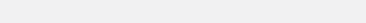
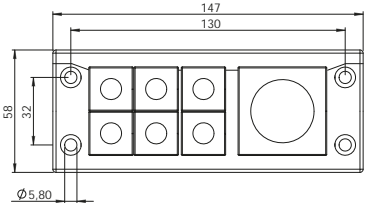

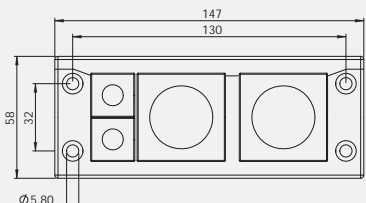
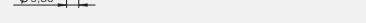
- Fast and easy assembly
- Warranty on pre-terminated cables remains
- Retrofits, repairs and maintenance can be done much more easily and quickly
- High cable density, wide variety of grommets
- Strain relief according to EN 62444
- High stability, vibration resistant

### Specifications

Material	Polyamide (PA)
Flame class	UL94-Vo
IP Rating	IP54, with gasket and correct selection of cable grommets (certified acc. to EN 60529)
UL type rating	UL type 12 (acc. to UL 50E)
Operating temperature	- 40°C to + 140°C (static) - 40°F to + 284°F (static)
Properties	Halogen-free, silicone-free
Cut-out dimensions	36 × 112 mm / 1.378 × 4.409" / page 218 - 219
Frame depth	17 mm / 0.669"

### Accessories

Cable grommets	48 - 52
KEL-SNAP Mounting frames	31
KEL-EMC Grounding mounts	138 - 140
KDR Gland plates	164 - 177
FP Flange plates	178 - 183
MP Module plates	174 - 175
ST Plugs	53

Description	Type	Order No.	Grommets small   large	PU
	KEL-U 24 10	54241	10 -	10
	KEL-U 24 10 with V2A screws	54241.200	10 -	10
	KEL-U 24 7	54247	6 1	10
	KEL-U 24 7 with V2A screws	54247.200	6 1	10
	KEL-U 24 4	54244	2 2	10
	KEL-U 24 4 with V2A screws	54244.200	2 2	10