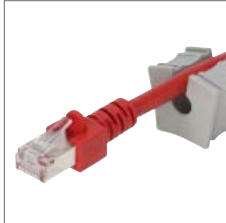


KEL-B Cable Entry Frames



Slit KT grommets



V2A
anti-corrosive

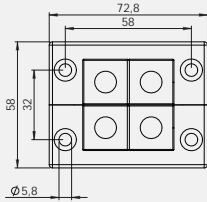
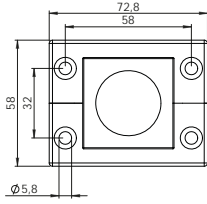
Also available with stainless steel screws (V2A).



Also available with threaded bushings.



1.11

Description	Type	Order No.	Grommets small large	PU
	KEL-B4	42204	4 -	10
	KEL-B4 with V2A screws	42204.200	4 -	10
	KEL-B1	42206	- 1	10
	KEL-B1 with V2A screws	42206.200	- 1	10

Product Description

Centrally split cable entry system for routing cables with connectors, providing an IP54 / up to UL type 12 rating. The slit grommet matching the cable diameter is placed around the cable and inserted into the cable entry frame. Either a cut-out of 36 mm or 46 mm in height can be chosen depending on the cables being routed. The split cable entry frame KEL-B matches exactly the cut-out dimensions of 46 × 46 mm measuring instruments. A flat rubber gasket is included in the shipment.

Advantages & Benefits

- Warranty on pre-terminated cables remains
- Retrofits, repairs and maintenance can be done much more easily and quickly
- Space saving shape
- Small cut-out, high cable density
- Strain relief according to EN 62444
- High stability, vibration resistant

Specifications

Material	Polyamide (PA)
Flame class	UL94-Vo
IP rating	IP54, with gasket and correct selection of cable grommets (certified acc. to EN 60529)
UL type rating	UL type 12 (acc. to UL 50E)
Operating temperature	- 40°C to + 140°C (static) - 40°F to + 284°F (static)
Properties	Halogen-free, silicone-free
Cut-out dimensions	46 × 46 mm / 1.811 x 1.811 " / Page 218 - 219
Frame depth	17 mm / 0.669 "

Accessories

Cable grommets	48 - 52
KEL-SNAP Mounting frames	31
KEL-EMC Grounding mounts	138 - 140
FP Flange plates	178 - 183
ST Plugs	53