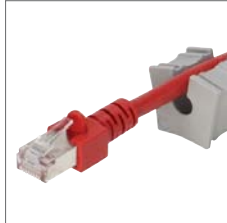


KEL 16 Cable Entry Frames



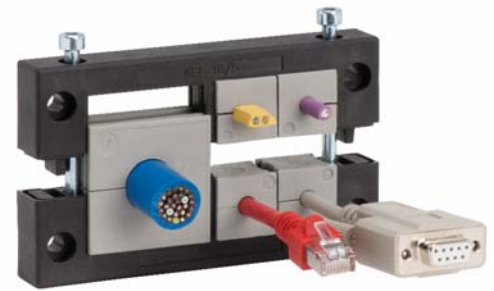
Slit KT grommets



Also available with stainless steel screws (V2A).



Also available with threaded bushings.



1.11

Description	Type	Order No.	Grommets small large	PU
	KEL 16 8	42168	8 -	10
	KEL 16 8 with V2A screws	42168.200	8 -	10
	KEL 16 5	42165	4 1	10
	KEL 16 5 with V2A screws	42165.200	4 1	10
	KEL 16 4	42164	4 -	10
	KEL 16 4 with V2A screws	42164.200	4 -	10
	KEL 16 2	42162	- 2	10
	KEL 16 2 with V2A screws	42162.200	- 2	10

Product Description

Centrally split cable entry system for routing cables with connectors, providing an IP54 / up to UL type 12 rating. The slit grommet matching the cable diameter is placed around the cable and inserted into the cable entry frame. Either a cut-out of 36 mm or 46 mm in height can be chosen depending on the cables being routed. The split cable entry frame KEL 16 matches exactly the cut-out dimensions of 16-pin standard industrial connectors. A flat rubber gasket is included in the shipment.

Advantages & Benefits

- Warranty on pre-terminated cables remains
- Retrofits, repairs and maintenance can be done much more easily and quickly
- High cable density, wide variety of grommets
- Strain relief according to EN 62444
- High stability, vibration resistant

Specifications

Material	Polyamide (PA)
Flame class	UL94-Vo
IP rating	IP54, with gasket and correct selection of cable grommets (certified acc. to EN 60529)
UL type rating	UL type 12 (acc. to UL 50E)
Operating temperature	- 40°C to + 140°C (static) - 40°F to + 284°F (static)
Properties	Halogen-free, silicone-free
Cut-out dimensions	36/46 × 86 mm / 1.378/1.811 x 3.386" / Page 218 - 219
Frame depth	17 mm / 0.669"

Accessories

Cable grommets	48 - 52
KEL-SNAP Mounting frames	31
KEL-EMC Grounding mounts	138 - 140
KDR Gland plates	164 - 177
FP Flange plates	178 - 183
ST Plugs	53