



KDX Series

Digital Power Meter

- Large LCD Display
- I/O 4 Inputs, 2 Outputs
- RS-485 or TCP/IP Communication



KDX-2

KDX-300

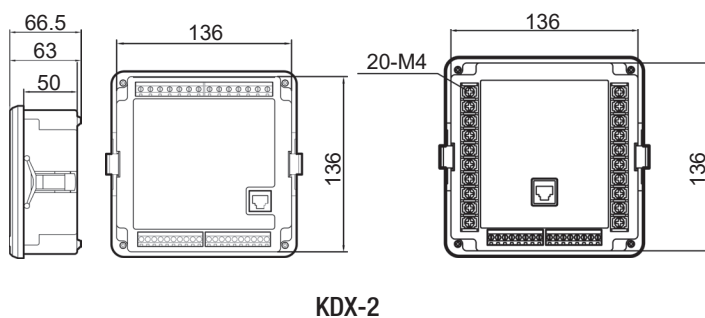
Specifications

Display	Type	5.1inch LCD, White Backlight KDX-300:3.5inch LCD, White Black Light
	Number of Line	4DigitsX3Lines+9DigitsX1Line
	Max.Height of Character	15mm, KDX-300:10.8mm
Communication	RS-485 Modbus RTU	2wire, 0~255 Address 4800~1900dps
	TCP/IP Modbus	Lan, RJ45 Port(KDX-2 Only)
Environmental Condition	Operating Temperature	0°C~55°C (32°F~131°F)
	Storage Temperature	-20°C~85°C (-4°F~185°F)
	Relative Humidity	≤ 80%
	Ingress Protection Rating	IP52(front),IP20(case)
Weight(g)		620g (approximately) KDX-300:420g (approximately)
I/O		4 Digital Inputs, 2 Digital Outputs, 2Temp(PT100 Ω)

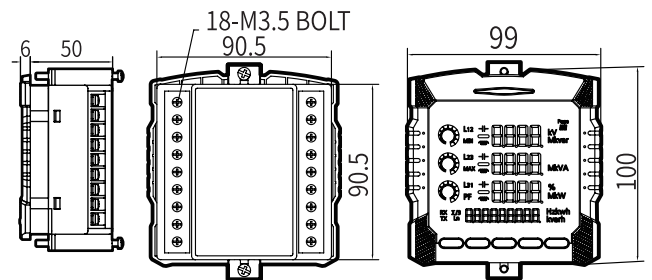
Measurement & Accuracy

Current	≤0.5% of reading + 1 digit
Voltage	≤0.5% of reading + 1 digit
Frequency	≤0.1% of reading + 1 digit KDX-300: ≤0.0.5% of reading + 1 digit
Active Power(Import/Export)	≤0.5% of reading + 1 digit
Reactive Power(Import/Export)	≤1.5% of reading + 1 digit
Apparent Power(Import/Export)	≤1.5% of reading + 1 digit
Power Factor	≤1.5% of reading + 1 digit
Active Energy (Import/Export)	≤1.0% of reading + 1 digit
Reactive Energy (Import/Export)	≤3.0% of reading + 1 digit

Dimension



KDX-2



KDX-300

Ordering Information

KDX - 2 4 0 U / KDX-300
 ① ② ③

① Function	0	Basic Measurement
	1	Basic+2DO* Put+4DI*
	2	Basic+2Temp
	3	Basic+2DO*+4DI*+2Temp
② Output Voltage	0	None
	1	RS-485
	2	TCP/IP
③ Terminal	U	Bolt
	I	Pin

*DO - Digital Out Put *DI - Digital In Put

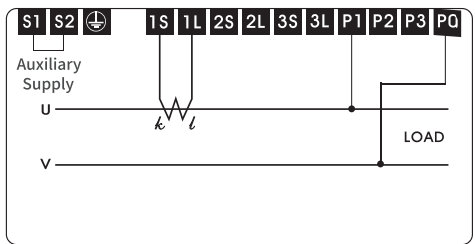
Inputs

Auxiliary Supply	AC 90~260V(50 or 60Hz), DC110V
Voltage(Direct or Secondary)	AC 40~500V
Current (Direct or Secondary)	AC 0.1~6.0A
Voltage Ratio	Max. 154KV(3P3W), 22.9KV(3P4W)/110V
Current Ratio	Max. 6000A/5A

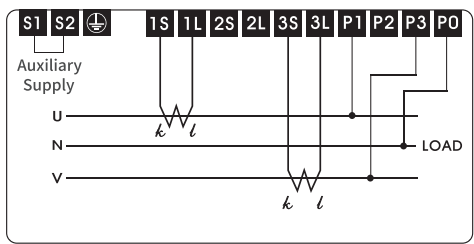
Connections

Circuit	Three Phase 3Wire, Three Phase 4Wire
CT, PT, Aux Terminal	M4 Bolt
RS-485,I/O Terminal	Solid:0.2~4.0 mm ² (30~12AWG) Stranded:0.2~2.5mm ² (30~12AWG)

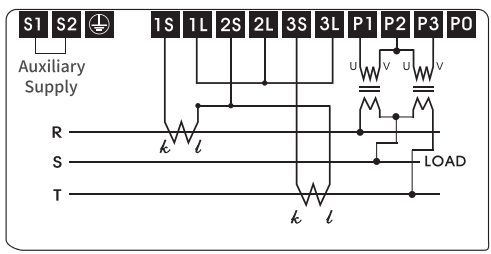
Connection Diagram (KDX-2/KDX-300)



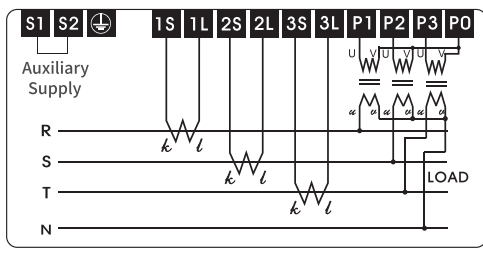
1Phase 2Wire



1Phase 3Wire

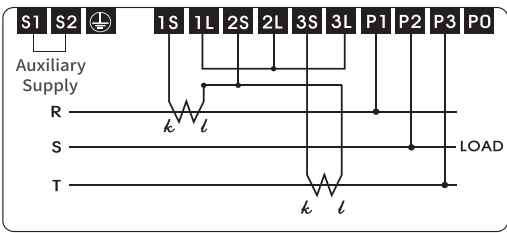


3Phase 3Wire

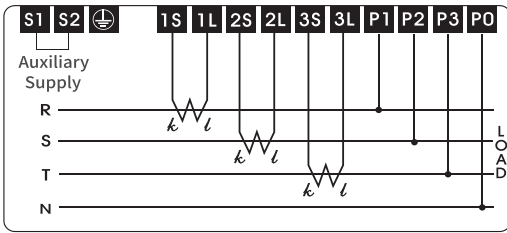


3Phase 4Wire

Method of direct connection without PT of line-to-line voltage 40~500V (KDX-2 Only)

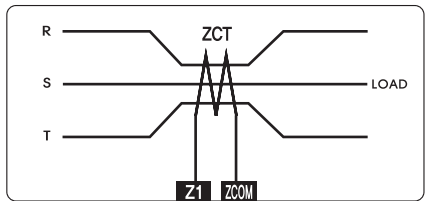


3Phase 3Wire

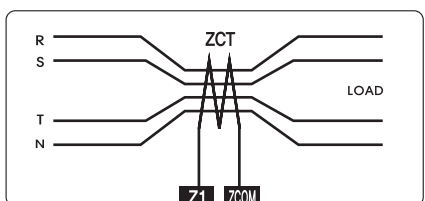


3Phase 4Wire

Method of Connection with ZCT (KDX-2 Only)

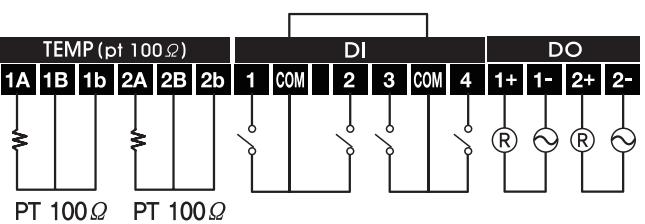


3Phase 3Wire

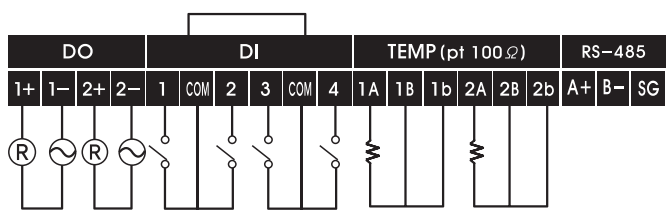


3Phase 4Wire

DI, DO, Temperature Method of Connection (KDX-2 Only)



Bolt Terminal Type



Pin Terminal Type

*DO - Digital Out Put
*DI - Digital In Put