

IS 218

Inductive switches

en 02-2010/03 50110213



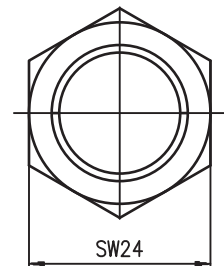
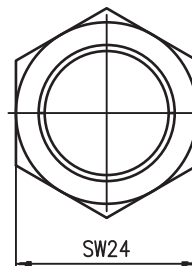
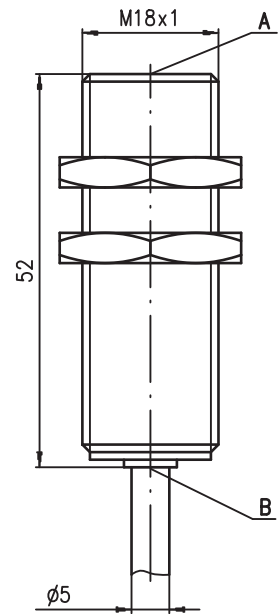
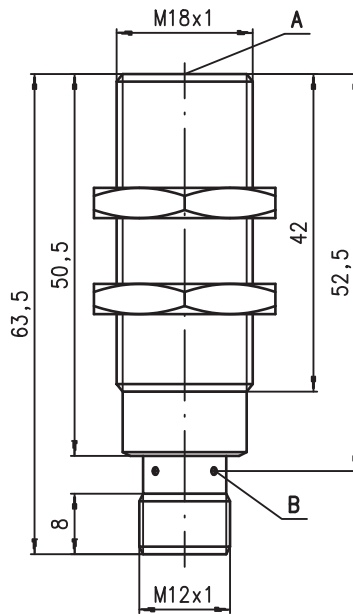
M18
5 mm
8 mm
12 mm



Embedded

- Slim and short cylindrical metal housing M8
- Chromium-plated brass housing
- Built-in short circuit protection, inductive protection and polarity reversal protection
- LED for switching state visible from 360°

Dimensioned drawing

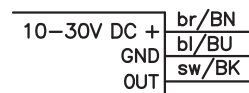


Tightening torque of the fastening nuts
 IS 218...5E0..., IS 218...8E0... < 20Nm !
 IS 218...12E... < 25Nm !

- A Active surface
- B Yellow indicator diode

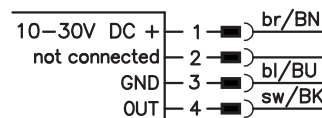
Electrical connection

Cable

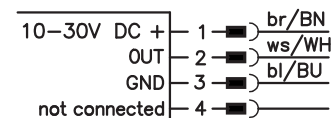


M12 connector

...NO... (normally open)



...NC... (normally closed)



...NO...-S12 (normally open):
 ...NC...-S12 (normally closed):

3-pin or 4-pin M12 connection cables can be used.
only 4-pin M12 connection cables can be used.

Accessories:

(available separately)

- M12 connectors (KD ...)
- Ready-made cables (K-D ...)
- Mounting clamp (MC 018...)

We reserve the right to make changes • DS_IS_218_E_en.fm



Specifications

General specifications

	IS 218...-5E0...	IS 218...-8E0...	IS 218...-12E...
Type of installation	embedded installation		
Typ. operating range limit S_n	5.0mm	8.0mm	12.0mm
Operating range S_a	0 ... 4.0mm	0 ... 6.5mm	0 ... 9.7mm

Electrical data

Operating voltage U_B 1)	10 ... 30VDC
Residual ripple σ	$\leq 20\%$ of U_B
Output current I_L	$\leq 200\text{mA}$
Open-circuit current I_0	$\leq 10\text{mA}$
Residual current I_r	$\leq 100\mu\text{A}$
Switching output/function .../4NO...	PNP transistor, make-contact (NO)
.../4NC...	PNP transistor, break-contact (NC)
.../2NO...	NPN transistor, make-contact (NO)
.../2NC...	NPN transistor, break-contact (NC)

Voltage drop U_d	$\leq 2\text{V}$
Hysteresis H of S_r	$\leq 10\%$
Temperature drift of S_r	$\leq 10\%$ 2)
Repeatability	$\leq 5\%$ 3)

Timing

Switching frequency f	2kHz	1.5kHz	500Hz
Delay before start-up	$\leq 40\text{ms}$	$\leq 70\text{ms}$	$\leq 50\text{ms}$

Indicators

Yellow LED (visible from 360°)	switching state
--------------------------------	-----------------

Mechanical data

Housing	chromium-plated brass		
Standard surface plate	18 x 18mm ² , Fe360	24 x 24mm ² , Fe360	36 x 36mm ² , Fe360
Active surface	PBTP		
Weight (M12 plug/cable)	approx. 50g/ approx. 165g		
Connection type	M12 connector 4-pin or cable: 2m, PVC, 3 x 0.34mm ² , \varnothing 5.0mm		

Environmental data

Ambient temperature	-25°C ... +70°C		
Protection class	IP 67		
Protective circuit 4)	1, 2, 3		
Standards applied	IEC/EN 60947-5-2		
Electromagnetic compatibility	IEC 60255-5	1kV	
	IEC 61000-4-2	Level 3 air 8kV (ESD)	
	IEC 61000-4-3	Level 3 10V/m (RFI)	
	IEC 61000-4-4	Level 3 2kV (Burst)	

- 1) Observe the safety regulations and installation instructions regarding power supply and wiring; for UL applications: only for use in "Class 2" circuits acc. to NEC
- 2) Over the entire operating temperature range
- 3) For $U_B = 20 \dots 30\text{VDC}$, ambient temperature $T_a = 23^\circ\text{C} \pm 5^\circ\text{C}$
- 4) 1=polarity reversal protection, 2=short circuit protection, 3=inductive protection for all outputs

Order guide

The sensors listed here are preferred types; current information at www.leuze.com.

S_n	Designation	Part No.
$S_n = 5\text{mm}$	IS 218 MM/4NO-5E0	50109692
	IS 218 MM/4NO-5E0-S12	50109693
	IS 218 MM/2NO-5E0	50109694
$S_n = 8\text{mm}$	IS 218 MM/4NO-8E0	50109700
	IS 218 MM/4NO-8E0-S12	50109701
	IS 218 MM/4NC-8E0-S12	50109702
	IS 218 MM/2NO-8E0	50112104
	IS 218 MM/2NO-8E0-S12	50109704
$S_n = 12\text{mm}$	IS 218 MM/4NO-12E	50109706
	IS 218 MM/2NO-12E	50111954

Tables

Reduction factors:

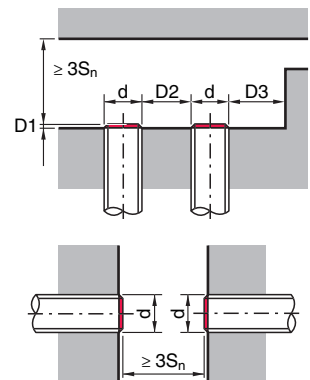
for $S_n = 5.0\text{mm}$		for $S_n = 8.0\text{mm}$	
Steel Fe360	1	Steel Fe360	1
Copper	0.40	Copper	0.30
Aluminum	0.40	Aluminum	0.35
Brass	0.50	Brass	0.40
Stainless steel	0.80	Stainless steel	0.70

for $S_n = 12.0\text{mm}$

Steel Fe360	1
Copper	0.20
Aluminum	0.26
Brass	0.33
Stainless steel	0.63

Mounting

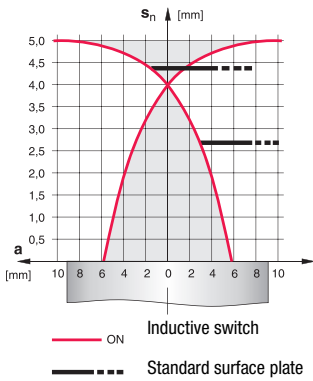
Embedded installation:



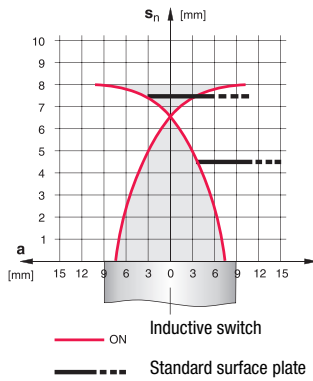
Ferromagnetic and non-ferromagnetic materials				
S_n [mm]	D1 [mm]	D2 [mm]	D3 [mm]	
5.0	0	14.0	5.0	
8.0	0.75	22.0	9.0	
12.0	4.0	26.0	9.0	

Diagrams

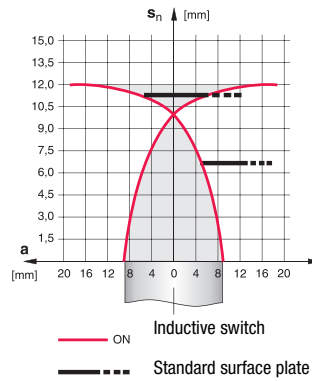
Models with $S_n = 5.0\text{mm}$



Models with $S_n = 8.0\text{mm}$



Models with $S_n = 12.0\text{mm}$



Type key

I S 2 1 8 M M / 4 N O - 8 E 0 - S 1 2

Operating principle / construction

IS Inductive switch / Standard

Series

218 Series with M18 x 1 external thread

Housing / thread

MM Metal housing (active surface: plastic) / metric thread

Output function

4NO PNP transistor, make-contact (NO)

4NC PNP transistor, break-contact (NC)

2NO NPN transistor, make-contact (NO)

2NC NPN transistor, break-contact (NC)

Measurement range / type of installation

5E0 Typ. scan range limit 5.0mm / embedded installation

8E0 Typ. scan range limit 8.0mm / embedded installation

12E Typ. scan range limit 12.0mm / embedded installation

Electrical connection

N/A Cable, PVC, standard length 2000mm

S12 M12 connector, 4-pin, axial

200-S12 Cable, PVC, length 200mm with M12 connector, 4-pin, axial

Remarks

● **Approved purpose:**

The inductive switches are electronic sensors for the inductive, contactless detection of objects.

This product may only be used by qualified personnel and must only be used for the approved purpose. This sensor is not a safety sensor and is not to be used for the protection of persons.

