

FP-AE

Flange Plates for Compact Enclosures



Product Description

We supply complete flange plates FP with 112 × 36 mm cut-outs for compact enclosures of the AE series. The cut-outs, as well as the drilling template, conform to the standard cut-outs for 24-pole industrial connectors.

All flange plates are RAL 7035 powder-coated. Please use the gaskets of the standard plates. Enclosures are supplied with gaskets and screws.

We recommend fastening the cable entry systems with a torque of 1.5 - 2.0 Nm.

Advantages & Benefits

- No expensive extra sheet metal work is required
- High cable density is achieved by using KEL, KEL-U, KEL-QUICK, KEL-DPU, KEL-DPZ or KEL-DP
- Reduce labor costs by using cable entry systems compared to the assembly of conventional cable glands

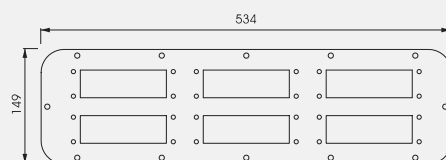
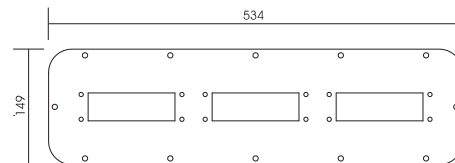
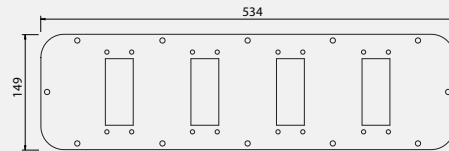
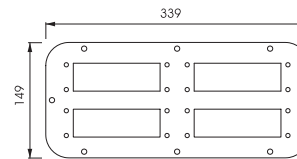
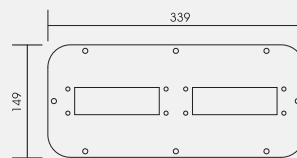
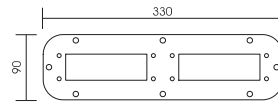
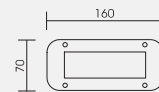
Specifications

Material **Carbon steel, powder coated**

Compatible with

KEL Cable entry frames	18 - 19
KEL-U Cable entry frames	8 - 14
KEL-QUICK Cable entry frames	56 - 57
KEL-SNAP Mounting frames	31
KEL-QTA 24 Cable entry frames	63 - 65
KEL-DPU 24 Cable entry plates	76 - 77
KEL-DPZ 24 Cable entry plates	78 - 79
KEL-DP 24 Cable entry plates	86
KEL-BES	68
KEL-BES-S	69
Blank plates	184 - 186

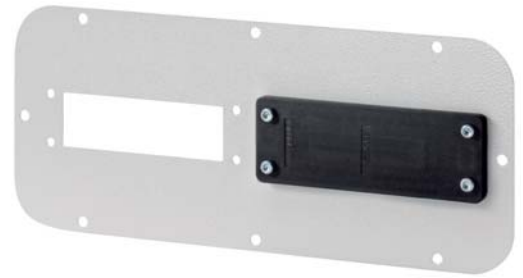
Description



FP-AE

Flange Plates for Compact Enclosures

IP54



Type	Order No. RAL 7035	Compatible with: (Product Group 1)	Compatible with: (Product Group 2)	Size FP	Compatible with (e.g. for Rittal)
FP-AE 160 70 with 1 cut-out 36 x 112 mm / 1.417 x 4.409 "	43836	KEL-QTA 24	KEL-DP 24	1	AE 1032 AE 1035
FP-AE-24 330 90 with 2 cut-outs 36 x 112 mm / 1.417 x 4.409 "	43838	KEL 24 KEL-U 24 KEL-QUICK 24 KEL-QTA 24 KEL-BES 24 KEL-BES-S 24	KEL-DPZ 24 KEL-DPU 24 KEL-DP 24	3	AE 1030 AE 1031 AE 1038 AE 1380
FP-AE-16 330 90 with 2 cut-outs 36 x 86 mm / 1.417 x 3.386 "	43861	KEL 16 KEL-U 16 KEL-QUICK 16 KEL-BES 16 KEL-BES-S 16		3	
FP-AE 339 149 with 2 cut-outs 36 x 112 mm / 1.417 x 4.409 "	43840	KEL 24 KEL-U 24 KEL-QUICK 24 KEL-SNAP 24 KEL-QTA 24 KEL-BES 24 KEL-BES-S 24	KEL-DPZ 24 KEL-DPU 24 KEL-DP 24	4	AE 1037 AE 1045 AE 1050 AE 1057 AE 1100 AE 1110 AE 1114 AE 1130 AE 1213 AE 1338 AE 1350
FP-AE 339 149 with 4 cut-outs 36 x 112 mm / 1.417 x 4.409 "	43846	KEL 24 KEL-U 24 KEL-QUICK 24 KEL-QTA 24 KEL-BES 24 KEL-BES-S 24	KEL-DPZ 24 KEL-DPU 24 KEL-DP 24	4	CS 9751.125 CS 9751.145 CS 9751.165 CS 9752.125 TP 6710 TP 6712 TP 6714 TP 6716
FP-AE 534 149 with 4 cut-outs 36 x 86 mm / 1.417 x 3.386 "	43871	KEL 16 KEL-U 16 KEL-QUICK 16 KEL-SNAP 16 KEL-BES 16 KEL-BES-S 16		5	AE 1039 AE 1054 AE 1055 AE 1058 AE 1060 AE 1073 AE 1076 AE 1077 AE 1090 AE 1180 AE 1260 AE 1280 AE 1339 AE 1360 AE 1376 AE 1958 EL 1919 EL 1926
FP-AE 534 149 with 3 cut-outs 36 x 112 mm / 1.417 x 4.409 "	43842	KEL 24 KEL-U 24 KEL-QUICK 24 KEL-SNAP 24 KEL-QTA 24 KEL-BES 24 KEL-BES-S 24	KEL-DPZ 24 KEL-DPU 24 KEL-DP 24	5	IN 1076.290
FP-AE 534 149 with 6 cut-outs 36 x 112 mm / 1.417 x 4.409 "	43848	KEL 24 KEL-U 24 KEL-QUICK 24 KEL-QTA 24 KEL-BES 24 KEL-BES-S 24	KEL-DPZ 24 KEL-DPU 24 KEL-DP 24	5	TP 6711 TP 67113 TP 6715 TP 6717