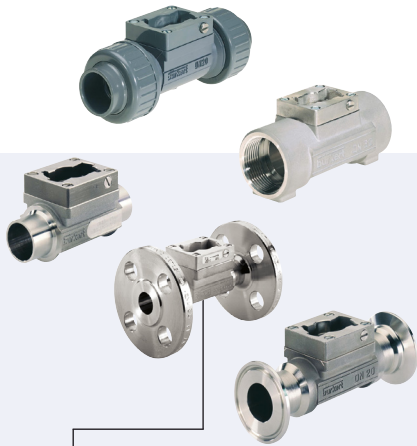


## INLINE sensor-fitting with paddle wheel for flow measurement



Type S030 can be combined for...



**Type 8030**  
Flowmeter



**Type 8032**  
On/Off flowmeter



**Type SE30 Ex**  
Flowmeter  
ATEX version



**Type 8035**  
Flowmeter



**Type 8036**  
Flowmeter



**Type 8611**  
Universal-Control-  
ler eControl

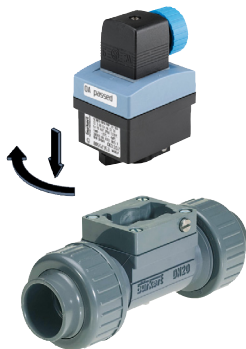
- DN06 to DN65
- Closed pipe system, sensor inside fitting
- Quarter-turn technology
- Transmitter available for:
  - Indication, Monitoring, Transmitting
  - On/Off control, Batch control

The sensor-fitting S030 has a built-in paddle wheel to measure the flow rate. When liquid flows through the pipe, the paddle wheel is set in rotation producing pulses which frequency is proportional to the flow rate.

The Bürkert "INLINE Quarter-turn" technology is a construction ensuring a leakage free operation.

The paddle wheel rotation (permanent magnets included in the wheels) is detected contactless through the sensor-fitting wall. The transmitter can be snapped-on or removed without opening the pipe or interrupting the process.

### The Bürkert Quarter-turn technology



General data	
<b>Pipe diameter</b>	DN06...DN65
<b>Measurement range</b>	0.5 ... 1200 l/min
<b>Flow velocity</b>	0.3 ... 10 m/s (see flow diagram)
<b>Measurement error</b>	Teach-In (via a remote transmitter) ± 1 % of Reading <sup>1)</sup> (at the teach flow rate value) Standard K-factor ± 2.5 % of Reading <sup>1)</sup>
<b>Linearity<sup>1)</sup></b>	± 0.5 % of F.S.*
<b>Repeatability<sup>1)</sup></b>	± 0.4 % of Reading
<b>Process connections</b>	Metal Plastic Internal or external thread, weld ends, Clamp or flange True union, spigot or external thread
<b>Materials</b>	Seal Body FKM or EPDM (depending on version, see ordering chart) Stainless steel (316L - 1.4404), brass (CuZn39Pb2), PVC, PP, PVDF Screws Paddle wheel Shaft and bearings Stainless steel (316L - 1.4404) PVDF (PP on request or stainless steel, see data sheet 8030HT) Ceramics (Al <sub>2</sub> O <sub>3</sub> )
Medium data	
<b>Medium temperature</b>	0 ... + 50 °C (+32 ... + 122 °F) for sensor-fitting in PVC 0 ... + 80 °C (+32 ... + 176 °F) for sensor-fitting in PP - 15 ... + 100 °C (+5 ... + 212 °F) for sensor-fitting in stainless steel, brass or PVDF
<b>Medium pressure (max.)</b>	see pressure/temperature chart Metal Plastic PN16 (232.16 PSI) (PN40 (580.4 PSI) on request) PN10 (145.1 PSI)
<b>Fluid properties</b>	clean, neutral or slightly aggressive, solid-free liquids Pollution Viscosity max. 1 %, size of particles 0.5 mm max. 300 cSt. max.

\* F.S. = Full scale (10 m/s)

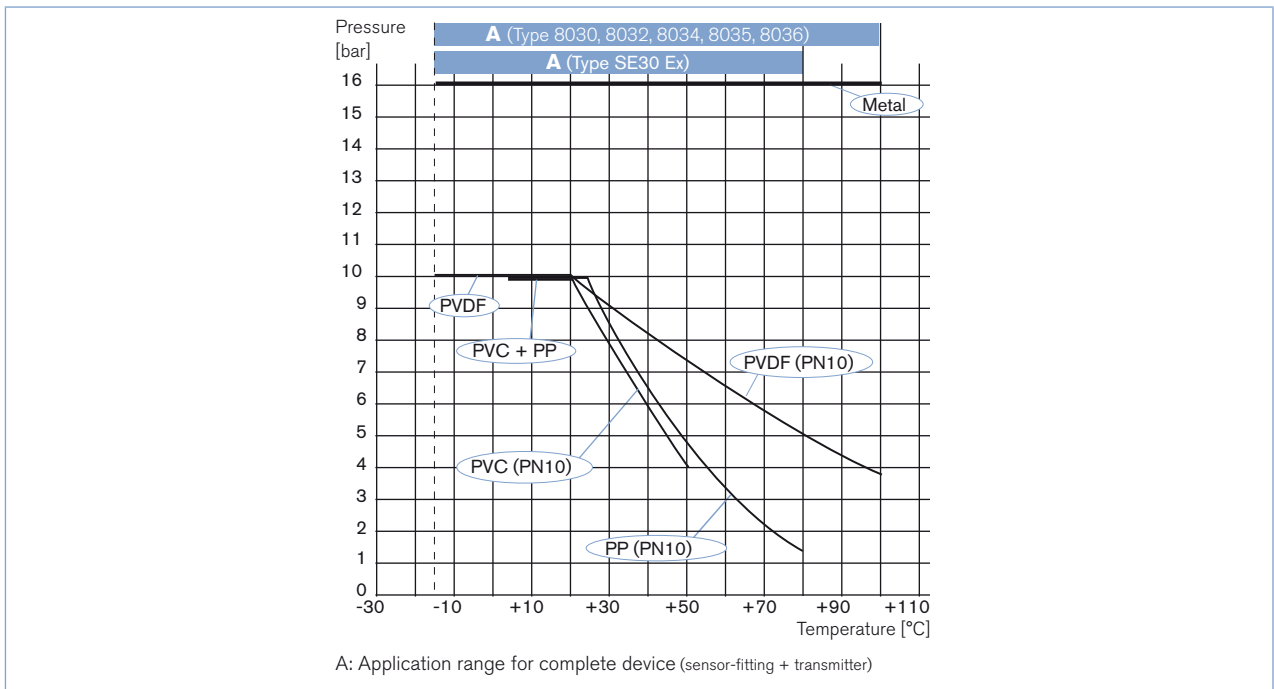
<sup>1)</sup> Under reference conditions i.e. measuring fluid = water, ambient and water temperature = 20 °C, applying the minimum inlet and outlet pipe straights, matched inside pipe dimensions.

Environment	
<b>Ambient temperature (operating and storage)</b>	-15 ... +60 °C (+5... +122 °F) for sensor-fitting in PVC -15 ... +80 °C (+5... +176 °F) for sensor-fitting in PP -15 ... +100 °C (+5... +212 °F) for sensor-fitting in stainless steel, brass or PVDF depending on associated transmitter
Standards, directives and Certifications	
<b>Directive - Pressure</b>	Complying with article 4, §1 of 2014/68/EU directive*
<b>Certificate on request</b>	Inspection certificate 3.1 (acc. to EN-ISO 10204); Test report 2.2 (acc. to EN-ISO 10204); Certification of Conformity for the surface Quality (DIN4762-DIN4768-ISO/4287/1); 3 points Flow calibration certificate; FDA declaration of conformity (stainless steel fitting only with EPDM seal)

\* For the 2014/68/EU pressure directive, the device can only be used under following conditions (depending on max. pressure, pipe diameter and fluid).

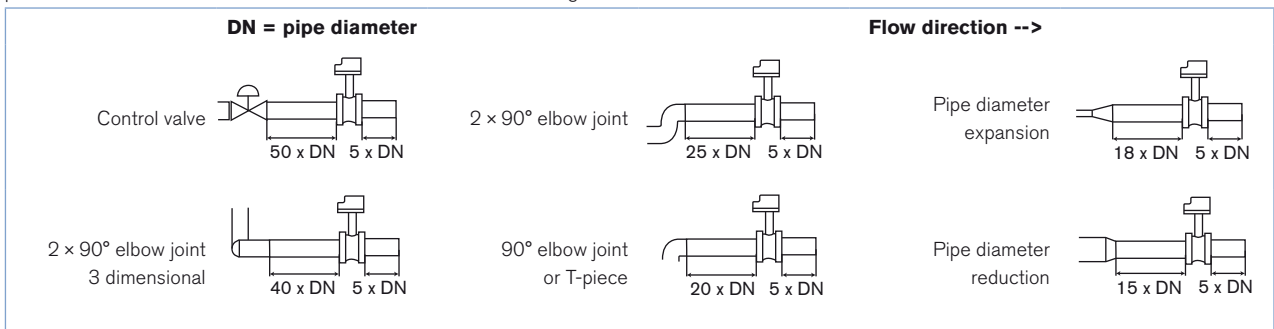
Type of fluid	Conditions
<b>Fluid group 1, article 4, §1.c.i</b>	DN ≤ 25
<b>Fluid group 2, article 4, §1.c.i</b>	DN ≤ 32 or PN*DN ≤ 1000
<b>Fluid group 1, article 4, §1.c.ii</b>	DN ≤ 25 or PN*DN ≤ 2000
<b>Fluid group 2, article 4, §1.c.ii</b>	DN ≤ 200 or PN ≤ 10 or PN*DN ≤ 5000

### Pressure/temperature diagram



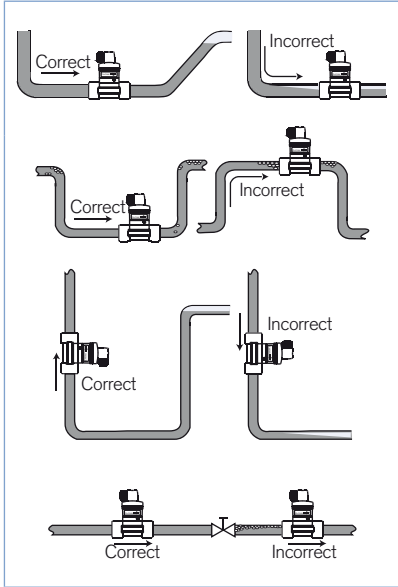
### Installation

Minimum straight inlet and outlet distances must be observed. According to the pipes design, necessary distances can be bigger or use a flow conditioner to obtain the best results. The most important layouts that could lead to turbulence in the flow are shown below, together with the associated prescribed minimum inlet and outlet distances determined according to the standard EN ISO 5167 - 1



Installation

The device can be installed into either horizontal or vertical pipes.



Pressure and temperature ratings must be in accordance to the selected sensor-fitting material.

The suitable pipe size is selected using the diagram flow rate/velocity/DN.

Construction

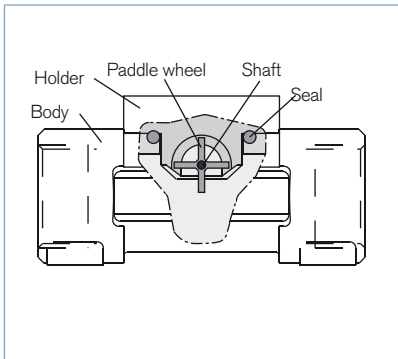
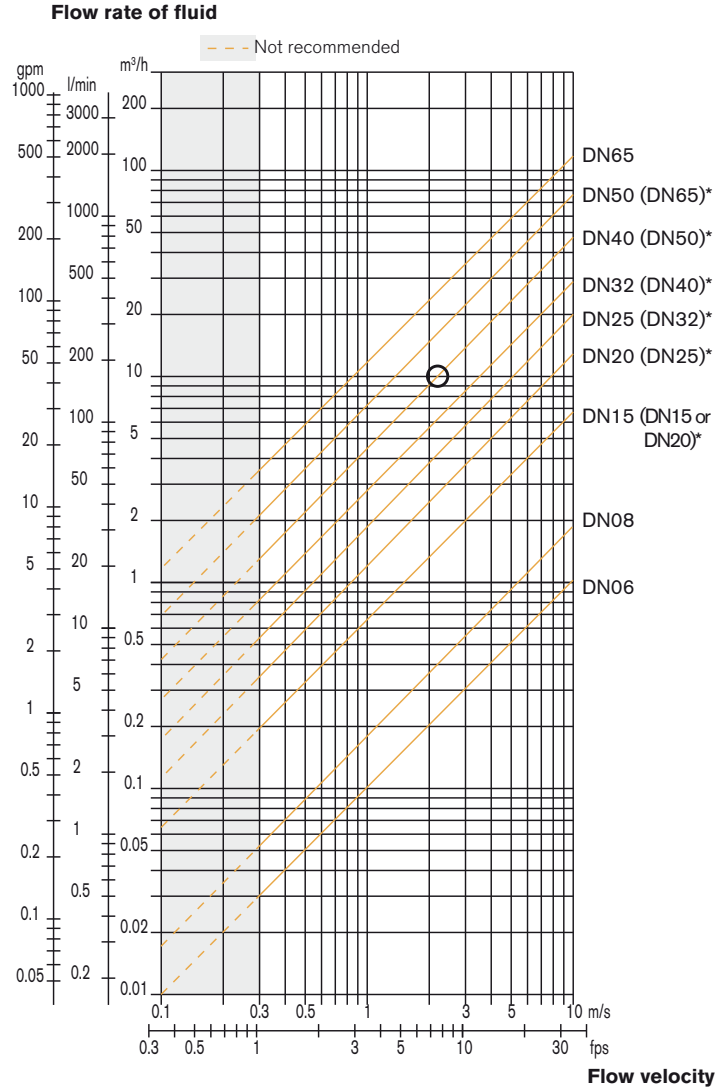


Diagram flow rate/velocity/DN

Example:

- Flow: 10 m<sup>3</sup>/h
- Ideal flow velocity: 2 ... 3 m/s

For these specifications, the diagram indicates a pipe size of DN40 [or DN50 for (\*) mentioned sensor-fittings]

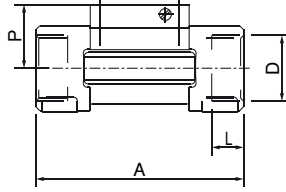


- \* for following sensor-fittings with:
- external threads acc. to SMS 1145
  - weld ends acc. to SMS 3008, BS4825-1/ASME BPE/DIN 11866 series C or DIN 11850 series 2/ DIN 11866 series A/DIN EN 10357 series A
  - Clamp acc. to SMS 3017, BS 4825-3/ASME BPE or DIN 32676 series A

**INLINE sensor-fitting dimensions**

**Internal thread connection**

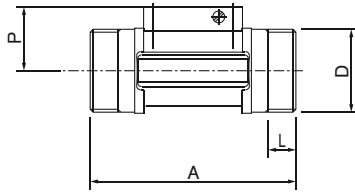
G, NPT or Rc  
in stainless steel (316L - 1.4404) or  
brass (CuZn39Pb2)



DN	P	A	D	L
[mm]	[mm]	[mm]	[inch]	[mm]
15	34.5	84.0	G 1/2	16.0
			NPT 1/2	17.0
			Rc 1/2	15.0
20	32.0	94.0	G 3/4	17.0
			NPT 3/4	18.3
			Rc 3/4	16.3
25	32.2	104.0	G 1	23.5
			NPT 1	18.0
			Rc 1	18.0
32	35.8	119.0	G 1 1/4	23.5
			NPT 1 1/4	21.0
			Rc 1 1/4	21.0
40	39.6	129.0	G 1 1/2	23.5
			NPT 1 1/2	20.0
			Rc 1 1/2	19.0
50	45.7	148.5	G 2	27.5
			NPT2	24.0
			Rc 2	24.0

**External thread connection**

G, NPT or Rc  
in stainless steel (316L - 1.4404),  
brass (CuZn39Pb2),  
PVC (only DN6 and DN8)  
or PVDF (only DN8)

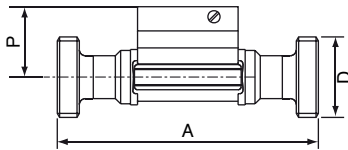


DN	P	A	D		L
[mm]	[mm]	[mm]	[inch]	[mm]	[mm]
06	29.5	90.0	G 1/2	-	14.0
08	29.5	90.0	** 1/2	M 16 x 1.5	14.0
15	34.5	84.0	G 3/4	-	11.5
20	32.0	94.0	G 1	-	13.5
25	32.2	104.0	G 1 1/4	-	14.0
32	35.8	119.0	G 1 1/2	-	18.0
40	39.6	129.0	-	M 55 x 2	19.0
50	45.7	148.5	-	M 64 x 2	20.0

\*\* G, NPT, RC according to sensor-fitting version

**External thread connection**

SMS 1145,  
in stainless steel (316L - 1.4404)

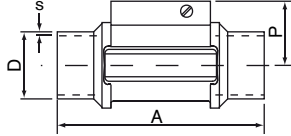


DN	P	A	D
[mm]	[mm]	[mm]	
25	32.0	130	Rd 40 x 1/6"
40	35.8	164	Rd 60 x 1/6"
50	39.6	173	Rd 70 x 1/6"

## INLINE sensor-fitting dimensions

### Weld end connection

EN ISO 1127/ISO 4200/DIN 11866 series B,  
SMS 3008,  
BS 4825-1/ASME BPE/DIN 11866 series C or  
DIN 11850 series 2/DIN 11866 series A/  
DIN EN 10357 series A  
in stainless steel (316L - 1.4404)



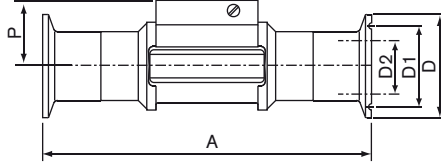
DN	P	A	Standard	D	s
[mm]	[mm]	[mm]		[mm]	[mm]
08	-	-	EN ISO 1127/ISO 4200/DIN 11866 series B	-	-
	-	-	SMS 3008	-	-
	-	-	ASME BPE/DIN 11866 series C	-	-
	29.5	96.0	DIN 11850 series 2/DIN 11866 series A/ DIN EN 10357 series A	13.00	1.50
15	34.5	84.0	EN ISO 1127/ISO 4200/DIN 11866 series B	21.30	1.60
	-	-	SMS 3008	-	-
	-	-	ASME BPE/DIN 11866 series C	-	-
	34.5	84.0	DIN 11850 series 2/DIN 11866 series A/ DIN EN 10357 series A	19.0	1.50
20	32.0	94.0	EN ISO 1127/ISO 4200/DIN 11866 series B	26.9	1.60
	-	-	SMS 3008	-	-
	34.5	84.0	ASME BPE/DIN 11866 series C	19.05	1.65
	34.5	84.0	DIN 11850 series 2/DIN 11866 series A/ DIN EN 10357 series A	23.00	1.50
25	32.2	104.0	EN ISO 1127/ISO 4200/DIN 11866 series B	33.70	2.00
	32.0	94.0	SMS 3008	25.00	1.20
	32.0	94.0	BS 4825-1/ASME BPE/DIN 11866 series C	25.40	1.65
	32.0	94.0	DIN 11850 series 2/DIN 11866 series A/ DIN EN 10357 series A	29.00	1.50
32	35.8	119.0	EN ISO 1127/ISO 4200/DIN 11866 series B	42.40	2.00
	-	-	SMS 3008	-	-
	32.2	104.0	BS 4825-1/ASME BPE/DIN 11866 series C	32.00	1.65
	32.2	104.0	DIN 11850 series 2/DIN 11866 series A/ DIN EN 10357 series A	35.00	1.50
40	39.6	129.0	EN ISO 1127/ISO 4200/DIN 11866 series B	48.30	2.00
	35.8	119.0	SMS 3008	38.00	1.20
	35.8	119.0	BS 4825-1/ASME BPE/DIN 11866 series C	38.10	1.65
	35.8	119.0	DIN 11850 series 2/DIN 11866 series A/ DIN EN 10357 series A	41.00	1.50
50	45.7	148.5	EN ISO 1127/ISO 4200/DIN 11866 series B	60.30	2.60
	39.6	128.0	SMS 3008	51.00	1.20
	39.6	128.0	BS 4825-1/ASME BPE/DIN 11866 series C	50.80	1.65
	39.6	128.0	DIN 11850 series 2/DIN 11866 series A/ DIN EN 10357 series A	53.00	1.50
65	-	-	EN ISO 1127/ISO 4200/DIN 11866 series B	-	-
	45.7	147.0	SMS 3008	63.50	1.60
	45.7	147.0	BS 4825-1/ASME BPE/DIN 11866 series C	63.50	1.65
	-	-	DIN 11850 series 2/DIN 11866 series A/ DIN EN 10357 series A	-	-

## INLINE sensor-fitting dimensions

### Clamp connection

DIN 32676 series B,  
SMS 3017\*,  
BS 4825-3/ASME BPE\* or  
DIN 32676 series A  
in stainless steel (316L - 1.4404)

\* Available with internal surface finish Ra = 0.8 µm

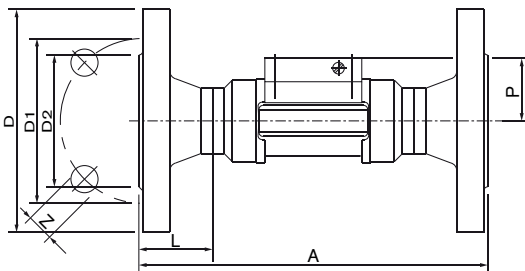


DN	P	A	Standard	D2	D1	D
[mm]	[mm]	[mm]		[mm]	[mm]	[mm]
08	-	-	DIN 32676 series B <sup>1)</sup>	-	-	-
	-	-	SMS 3017	-	-	-
	-	-	ASME BPE	-	-	-
	29.5	125	DIN 32676 series A	10.00	27.5	34.0
15	34.5	130	DIN 32676 series B <sup>1)</sup>	18.10	27.5	34.0
	-	-	SMS 3017	-	-	-
	-	-	ASME BPE	-	-	-
	29.5	119	DIN 32676 series A	16.00	27.5	34.0
20	32.0	150	DIN 32676 series B	23.70	43.5	50.5
	-	-	SMS 3017	-	-	-
	34.5	119	ASME BPE	15.75	19.6	25.0
	34.5	119	DIN 32676 series A	20.00	27.5	34.0
25	32.2	160	DIN 32676 series B	29.70	43.5	50.5
	32.0	129	SMS 3017	22.60	43.5	50.5
	32.0	129	BS 4825-3/ASME BPE	22.10	43.5	50.5
	32.0	136	DIN 32676 series A	26.00	43.5	50.5
32	35.8	180	DIN 32676 series B	38.40	43.5	50.5
	-	-	SMS 3017	-	-	-
	-	-	BS 4825-3/ASME BPE	-	-	-
	-	-	DIN 32676 series A	-	-	-
40	39.6	200	DIN 32676 series B	44.30	56.5	64.0
	35.8	161	SMS 3017	35.60	43.5	50.5
	35.8	161	BS 4825-3/ASME BPE	34.80	43.5	50.5
	35.8	161	DIN 32676 series A	38.00	43.5	50.5
50	45.7	230	DIN 32676 series B	55.10	70.5	77.5
	39.6	192	SMS 3017	48.60	56.5	64.0
	39.6	192	BS 4825-3/ASME BPE	47.50	56.5	64.0
	39.6	170	DIN 32676 series A	50.00	56.5	64.0
65	-	-	DIN 32676 series B	-	-	-
	45.7	216	SMS 3017	60.30	70.5	77.5
	45.7	216	BS 4825-3/ASME BPE	60.20	70.5	77.5
	-	-	DIN 32676 series A	-	-	-

<sup>1)</sup> similar to DIN 32676 series B but with clamp 34.0

### Flange connection

EN1092-1/B1/PN16, ANSI B16-5 or JIS 10 K  
in stainless steel (316L - 1.4404)

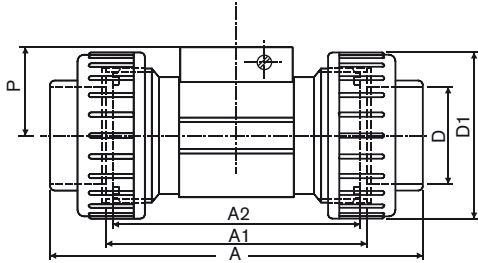


DN	P	A	Standard	L	Z	D2	D1	D				
[mm]	[mm]	[mm]		[mm]	[mm]	[mm]	[mm]	[mm]				
15	34.5	130	EN	23.5	4 x 14.0	45.0	65.0	95.0				
			ANSI						4 x 15.8	34.9	60.3	89.0
			JIS						4 x 15.0	51.0	70.0	95.0
20	32.0	150	EN	28.5	4 x 14.0	58.0	75.0	105.0				
			ANSI						4 x 15.8	42.9	69.8	99.0
			JIS						4 x 15.0	56.0	75.0	100.0
25	32.2	160	EN	28.5	4 x 14.0	68.0	85.0	115.0				
			ANSI						4 x 15.8	50.8	79.4	108.0
			JIS						4 x 19.0	67.0	90.0	125.0
32	35.8	180	EN	31.0	4 x 18.0	78.0	100.0	140.0				
			ANSI						4 x 15.8	63.5	88.9	117.0
			JIS						4 x 19.0	76.0	100.0	135.0
40	39.6	200	EN	36.0	4 x 18.0	88.0	110.0	150.0				
			ANSI						4 x 15.8	73.0	98.4	127.0
			JIS						4 x 19.0	81.0	105.0	140.0
50	45.7	230	EN	41.0	4 x 18.0	102.0	125.0	165.0				
			ANSI						4 x 19.0	92.1	120.6	152.0
			JIS						4 x 19.0	96.0	120.0	155.0

INLINE sensor-fitting dimensions

**True union connection**

DIN 8063, ASTM D 1785/76 or JIS K in PVC,  
 DIN 16962 in PP or  
 ISO 10931 in PVDF

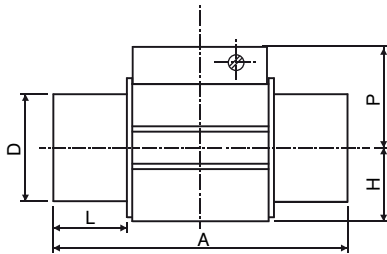


DN	P	A	Standard	A1	A2	D	D1
[mm]	[mm]	[mm]		[mm]	[mm]	[mm]	[mm]
08*	29.5	122.0 - -	DIN/ISO ASTM JIS	92 - -	90 - -	12.00 - -	- - -
15	34.5	128.0 130.0 129.0	DIN/ISO ASTM JIS	96	90	20.00 21.30 18.40	43
20	32.0	144.0 145.6 145.0	DIN/ISO ASTM JIS	106	100	25.00 26.70 26.45	53
25	32.2	160.0 161.4 161.0	DIN/ISO ASTM JIS	116	110	32.00 33.40 32.55	60
32	35.8	168.0 170.0 169.0	DIN/ISO ASTM JIS	116	110	40.00 42.20 38.60	74
40	39.6	188.0 190.2 190.0	DIN/ISO ASTM JIS	127	120	50.00 48.30 48.70	83
50	45.7	212.0 213.6 213.0	DIN/ISO ASTM JIS	136	130	63.00 60.30 60.80	103

\* Only available in PVC

**Spigot connection**

DIN 8063 in PVC  
 DIN 16962 in PP or  
 ISO 10931 in PVDF



DN	P	A	Standard	L	D	H
[mm]	[mm]	[mm]		[mm]	[mm]	[mm]
15	34.5	90 85 85	DIN 8063 DIN 16962 ISO 10931	16.5 14.0 14.0	20	17.5
20	32.0	100 92 92	DIN 8063 DIN 16962 ISO 10931	20.0 16.0 16.0	25	17.5
25	32.2	110 95 95	DIN 8063 DIN 16962 ISO 10931	23.0 18.0 18.0	32	21.5
32	35.8	110 100 100	DIN 8063 DIN 16962 ISO 10931	27.5 20.0 20.0	40	27.5
40	39.6	120 106 106	DIN 8063 DIN 16962 ISO 10931	30.0 23.0 23.0	50	31.5
50	45.7	130 110 110	DIN 8063 DIN 16962 ISO 10931	37.0 27.0 27.0	63	39.5

Ordering chart for sensor-fitting S030

Port connection	Seal	Standard	Article no.										
			DN06*-1/4"	DN06*-1/2"	DN08*-1/2"	DN15	DN20	DN25	DN32	DN40	DN50	DN65	
<b>Brass - with PVDF paddle wheel - Medium temperature max. 100 °C, PN16</b>													
Internal thread	FKM	G	-	-	-	423980	423981	423982	423983	423984	423985	-	
		NPT	-	-	-	423986	423987	423988	423989	423990	423991	-	
		Rc	-	-	-	423992	423993	423994	423995	423996	423997	-	
External thread	FKM	G	552557	552527	444023	423998	423999	424000	424001	424002	424003	-	
		NPT	-	-	449182	-	-	-	-	-	-	-	
		Rc	-	-	448668	-	-	-	-	-	-	-	
Metric	FKM		-	-	16x1.5 mm 552526	-	-	-	-	-	-		
<b>Stainless steel - with PVDF paddle wheel - Medium temperature max. 100 °C, PN16</b>													
Internal thread	FKM	G	-	-	-	424004	424005	424006	424007	424008	424009	-	
		NPT	-	-	-	424010	424011	424012	424013	424014	424015	-	
		Rc	-	-	-	424016	424017	424018	424019	424020	424021	-	
External thread	FKM	G	552733	552559	444029	424022	424023	424024	424025	424026	424027	-	
		NPT	-	-	449050	-	-	-	-	-	-	-	
		Rc	-	-	448669	-	-	-	-	-	-	-	
	EPDM	SMS 1145	-	-	-	-	-	443306	-	443307	443308	-	
Weld end	FKM	EN ISO 1127/ISO 4200/ DIN 11866 series B	-	-	552845 <sup>1)</sup>	424028	424029	424030	424031	424032	424033	-	
		SMS 3008	-	-	-	-	-	443298	-	443299	443300	443374 <sup>4)</sup>	
	EPDM	BS 4825-1/ASME BPE/ DIN 11866 series C	-	-	-	-	-	443369 <sup>3)</sup>	443370	443371	443372	443373	443374
		DIN 11850 series 2/ DIN 11866 series A/ DIN EN 10357 series A	-	-	551788	551789	551790	551791	-	551792	551793	-	
Clamp	FKM	DIN 32676 series B	-	-	-	424034 <sup>2)</sup>	424035	424036	424037	424038	424039	-	
		SMS 3017	-	-	-	-	-	443302	-	443303	443304	443399 <sup>4)</sup>	
		SMS 3017**	-	-	-	-	-	443387	-	443388	443389	443720 <sup>4)</sup>	
	EPDM	BS 4825-3/ASME BPE	-	-	-	-	443395 <sup>3)</sup>	443396	-	443397	443398	443399	
		BS 4825-3/ASME BPE**	-	-	-	-	443400	443717	-	443718	443719	443720	
		DIN 32676 series A	-	-	551794 <sup>2)</sup>	551795 <sup>2)</sup>	551796	551797	-	551798	551799	-	
Flange	FKM	EN 1092-1/B1/PN16	-	-	-	424040	424041	424042	424043	424044	424045	-	
		ANSI B16-5	-	-	-	424046	424047	424048	424049	424050	424051	-	
		JIS 10K	-	-	-	430108	430109	430110	430111	430112	430113	-	
<b>Stainless steel - with PVDF paddle wheel - Medium temperature max. 100 °C, PN40</b>													
Internal thread	FKM	G	-	-	-	427138	425737	425729	427152	427153	427154	-	

\* external thread  
 \*\* internal surface finish Ra = 0.8 µm  
 1) EPDM seal  
 2) Refer to Clamp with D dimensions of 34 mm (see dimension table on page 6)  
 3) DN20 only available in ASME BPE  
 4) Please refer to ASME BPE



## Ordering chart for sensor-fitting S030

Port connection	Seal	Standard	Article no.										
			DN06* <sup>-1/4"</sup>	DN06* <sup>-1/2"</sup>	DN08* <sup>-1/2"</sup>	DN15	DN20	DN25	DN32	DN40	DN50	DN65	
<b>PVC - with PVDF paddle wheel - Medium temperature max. 50 °C, PN10</b>													
True union**	FKM	DIN 8063	-	-	444022	423938	423939	423940	423941	423942	423943	-	
		ASTM D 1785/76	-	-	-	423950	423951	423952	423953	423954	423955	-	
		JIS K	-	-	-	429072	429073	429074	429075	429076	429077	-	
Spigot	FKM	DIN 8063	-	-	-	423944	423945	423946	423947	423948	423949	-	
Extern. thr.	FKM	G	-	552560	444025	-	-	-	-	-	-	-	
True union** without spigot	FKM		-	-	-	430734	430735	430736	430737	430738	430739	-	
	EPDM		-	-	-	430740	430741	430742	430743	430744	430745	-	
<b>PP - with PVDF paddle wheel - Medium temperature max. 80 °C, PN10</b>													
True union**	FKM	DIN 16962	-	-	-	423956	423957	423958	423959	423960	423961	-	
Spigot	FKM	DIN 16962	-	-	-	423962	423963	423964	423965	423966	423967	-	
<b>PVDF - with PVDF paddle wheel - Medium temperature max. 100 °C, PN10</b>													
True union**	FKM	ISO 10931	-	-	-	423968	423969	423970	423971	423972	423973	-	
Spigot	FKM	ISO 10931	-	-	-	423974	423975	423976	423977	423978	423979	-	
Extern. thr.	FKM	ISO 10931	-	-	444028	-	-	-	-	-	-	-	

\* external thread

\*\* with spigot and nut

Ordering chart accessories/spare parts (other versions on request)

**O-ring set for plastic sensor-fitting**

**O-ring set for metal sensor-fitting**

\*\* depending on sensor holder version :  
 - flat seal to use for holder with groove (old version)  
 - O-Ring to use for holder with lug (new version and "v2")

! Two versions of the S030 in DN15 and DN20 exist, having different K factors.

Only version 2, identified by the "v2" marking, is available from March 2012. The "v2" marking can be found:

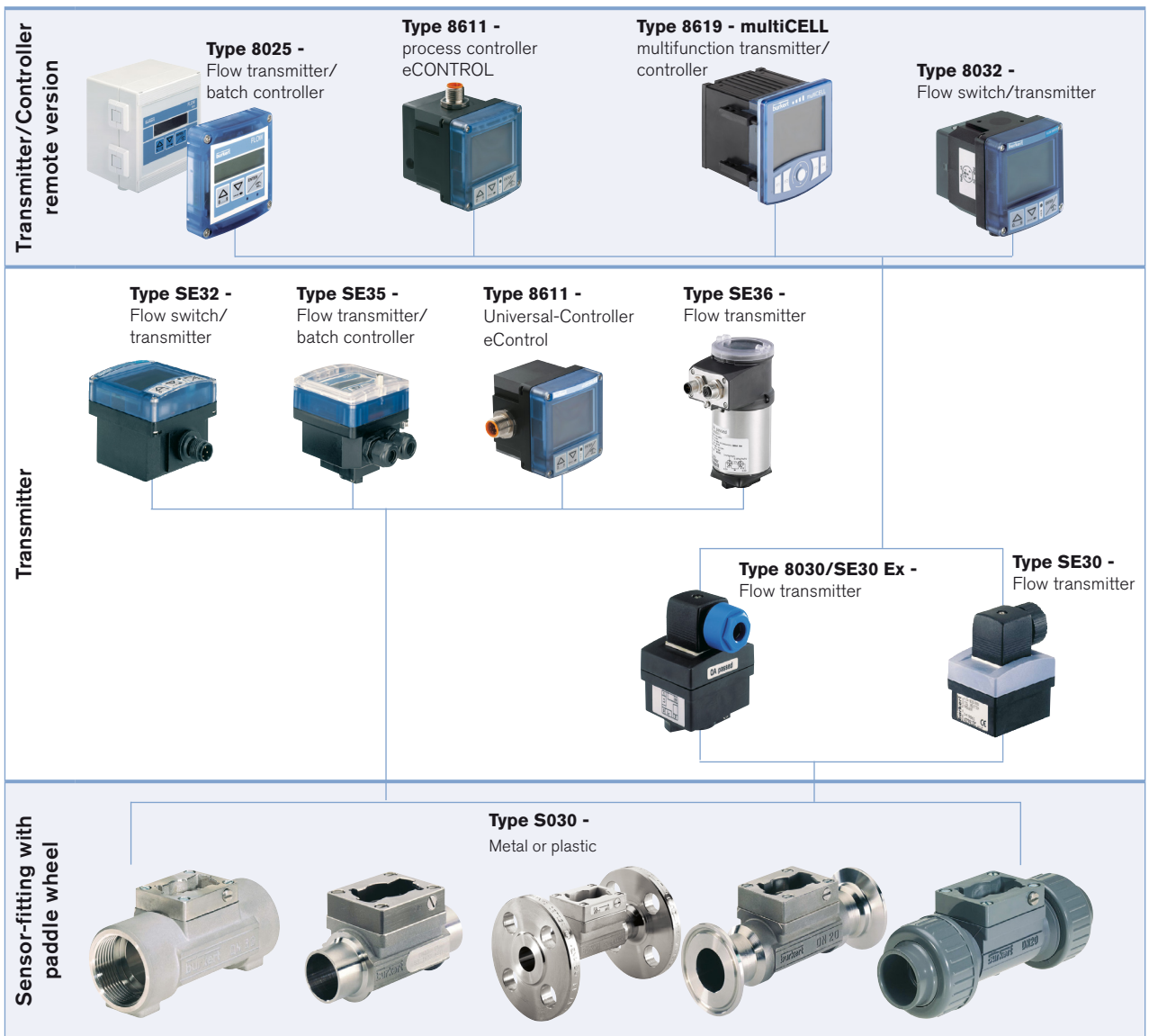
- on the bottom of the DN15 or DN20 sensor-fitting in plastic:
- on the side of the DN15 or DN20 sensor-fitting in metal:

Description	Article no.
<b>Sensor holder</b>	
Stainless steel with paddle wheel (PVDF), seal (FKM), screws and certificate for DN06, DN08, DN15 v2 and DN20 v2	448678
Stainless steel with paddle wheel (PVDF), seal (FKM), screws and certificate for DN15 (except DN15 v2 and DN20 v2)...DN65	432306
Stainless steel with paddle wheel (PVDF), seal (EPDM), screws and certificate for DN15 (except DN15 v2 and DN20 v2)...DN65	432305
Stainless steel with paddle wheel (PVDF), seal (EPDM), screws and certificate, Ra int. = 0.8 µm for DN15 (except DN15 v2 and DN20 v2)...DN65	434149
Stainless steel with paddle wheel (PP), seal (EPDM), screws and certificate for DN06, DN08, DN15 v2 and DN20 v2	554896
Stainless steel with paddle wheel (PP), seal (EPDM), screws and certificate for DN15 (except DN15 v2 and DN20 v2)...DN65	449425
Brass with paddle wheel (PVDF), seal (FKM), screws and certificate for DN06, DN08, DN15 v2 and DN20 v2	448677
Brass with paddle wheel (PVDF), seal (FKM), screws and certificate for DN15 (except DN15 v2 and DN20 v2)...DN65	432304
Brass with paddle wheel (PVDF), seal (EPDM), screws and certificate for DN15 (except DN15 v2 and DN20 v2)...DN65	432303
Brass with paddle wheel (PP), seal (EPDM), screws and certificate for DN15 (except DN15 v2 and DN20 v2)...DN65	449866
PVC with paddle wheel (PVDF), seal (FKM), screws and certificate for DN06, DN08, DN15 v2 and DN20 v2	448674
PVC with paddle wheel (PVDF), seal (FKM), screws and certificate for DN15 (except DN15 v2 and DN20 v2)...DN65	432298
PVC with paddle wheel (PVDF), seal (EPDM), screws and certificate for DN15 (except DN15 v2 and DN20 v2)...DN65	432297
PVC with paddle wheel (PP), seal (EPDM), screws and certificate for DN15 (except DN15 v2 and DN20 v2)...DN65	443982
PP with paddle wheel (PVDF), seal (FKM), screws and certificate for DN15...DN65	432300
PP with paddle wheel (PVDF), seal (EPDM), screws and certificate for DN15...DN65	432299
PP with paddle wheel (PP), seal (FKM), screws and certificate for DN15...DN65	552881
PP with paddle wheel (PP), seal (EPDM), screws and certificate for DN15...DN65	443983
PVDF with paddle wheel (PVDF), seal (FKM), screws and certificate for DN06, DN08, DN15 v2 and DN20 v2	448676
PVDF with paddle wheel (PVDF), seal (FKM), screws and certificate for DN15 (except DN15 v2 and DN20 v2)...DN65	432302
PVDF with paddle wheel (PVDF), seal (EPDM), screws and certificate for DN15 (except DN15 v2 and DN20 v2)...DN65	432301
<b>O-ring set</b>	
FKM - for metal sensor-fitting, DN06...DN65	426340
EPDM - for metal sensor-fitting, DN06...DN65	426341
FKM - for plastic sensor-fitting, DN08	448679
FKM - for plastic sensor-fitting, DN15	431555
FKM - for plastic sensor-fitting, DN20	431556
FKM - for plastic sensor-fitting, DN25	431557
FKM - for plastic sensor-fitting, DN32	431558
FKM - for plastic sensor-fitting, DN40	431559
FKM - for plastic sensor-fitting, DN50	431560
EPDM - for plastic sensor-fitting, DN08	448680
EPDM - for plastic sensor-fitting, DN15	431561
EPDM - for plastic sensor-fitting, DN20	431562
EPDM - for plastic sensor-fitting, DN25	431563
EPDM - for plastic sensor-fitting, DN32	431564
EPDM - for plastic sensor-fitting, DN40	431565
EPDM - for plastic sensor-fitting, DN50	431566

Ordering chart accessories/spare parts (other versions on request)

Description	Article no.
<b>Approvals/Certificates</b>	
Inspection certificate 3.1 (acc. to EN-ISO 10204)	803723
Test report 2.2 (acc. to EN-ISO 10204)	803722
Certification of Conformity for the surface Quality (DIN4762-DIN4768-ISO/4287/1)	804175
3 points Flow calibration certificate (S020 combined with the flow device inserted, only for DN ≤200)	550676
FDA approval	803724

Interconnection possibilities with the S030



To find your nearest Bürkert office, click on the orange box →

[www.burkert.com](http://www.burkert.com)

In case of special application conditions, please consult for advice.

Subject to alteration.  
© Christian Bürkert GmbH & Co. KG

1803/16\_EU-en\_00891878

DTS 1000011766 EN Version: Z Status: RL (released | freigegeben | valide) printed: 26.03.2018