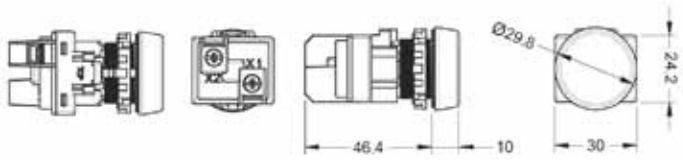
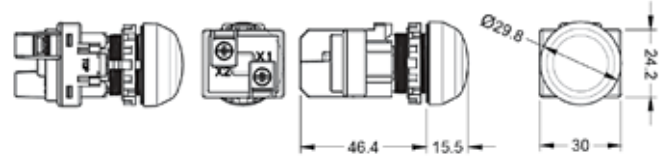


Dimensions

Flush/Marking type

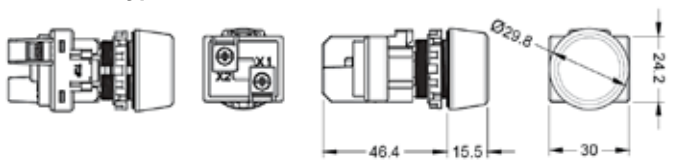


Dome type



Unit: mm

Extended type



Great resistance to UV rays •
Integrated LED microchip system: high brightness •
Ideal for installation in outdoor equipment •

KPL Series

Ø22 Pilot Lamp



Ordering Information

KPL - R - 12VAC

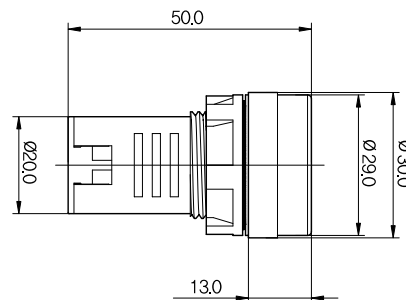
① ②

① Model	R	RED
	G	GREEN
	Y	YELLOW
	B	BLUE
	W	WHITE
② Voltage	AC	12V
	DC	24V
	AC	110V
		220V
	DC	110V

Specifications

Nominal Current	Approx. 20mA
Insulation Resistance	100MΩ at 500V DC
Weight	Approx. 24g
Ambient Temperature	-25°C~ +55°C with no icing
Expected Life	50,000hrs
Torgue	0.8N·m (8.16kg·cm)
Degree of protection	IP65
Recommended wire	Copper wire 14-16 AWG

Dimensions (Unit: mm)



Ordering Information

B30 - 17 R - 110VAC

① ②

① Model	R	RED
	G	GREEN
	Y	YELLOW
	B	BLUE
	W	WHITE
② Voltage	DC	24V
	AC	110V

Specifications

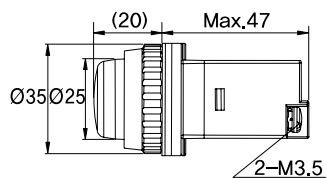
Degree of Protection		IP63 (Optional IP65)
Ambient Temperature	Operation	-25°C~ +70°C
	Storage	-30°C~+80°C
Ambient Humidity		35~80% RH
Recommended wire		Copper wire 14-16 AWG
Normal Current	AC	Approx. 15mA
	DC	Approx. 15mA
Voltage		24VDC, 110VDC, 110VAC, 220VAC
Expected Life		Min. 50,000 hrs

B30 Series

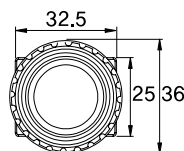
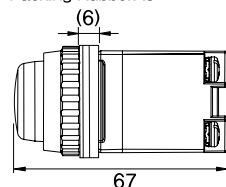
Ø30 Pilot Lamp



Dimensions (Unit: mm)



Packing RubberX3



Tower Lights

Beacon Lights

LED Indicators Pilot Lamps

Buzzer Alarms

Pushbutton Switches

Limit Switches

Foot Switches

SSR

Relay & Sockets

Relay Terminal Blocks

Terminal Blocks

Fuse Holders

Enclosures

D4